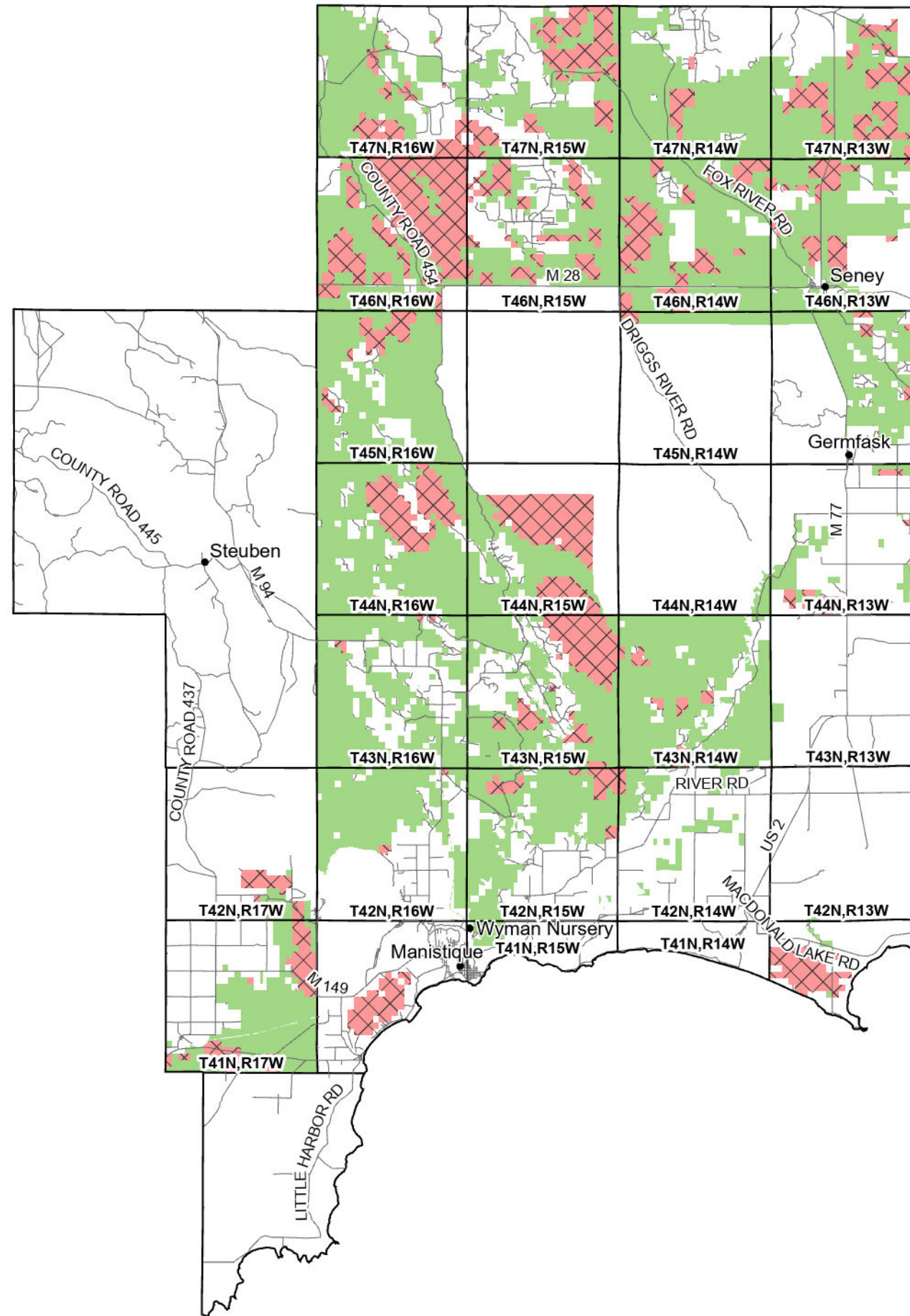


2026 POLITICAL TOWNSHIP LOCATION SCHOOLCRAFT COUNTY Effective April 1, 2026

If you need assistance with this map, email DNR-Forestry or call 517-284-5900



- State Forest Land Fuelwood Permissions
- Open (Recently Closed Timber Sale)
 - Open
 - Open (Military Restrictions – Possible closure from May to September)
 - Closed

Detailed maps are available from permitting office and DNR website for blocks on map identified by town and range numbers such as T27N, R06W

