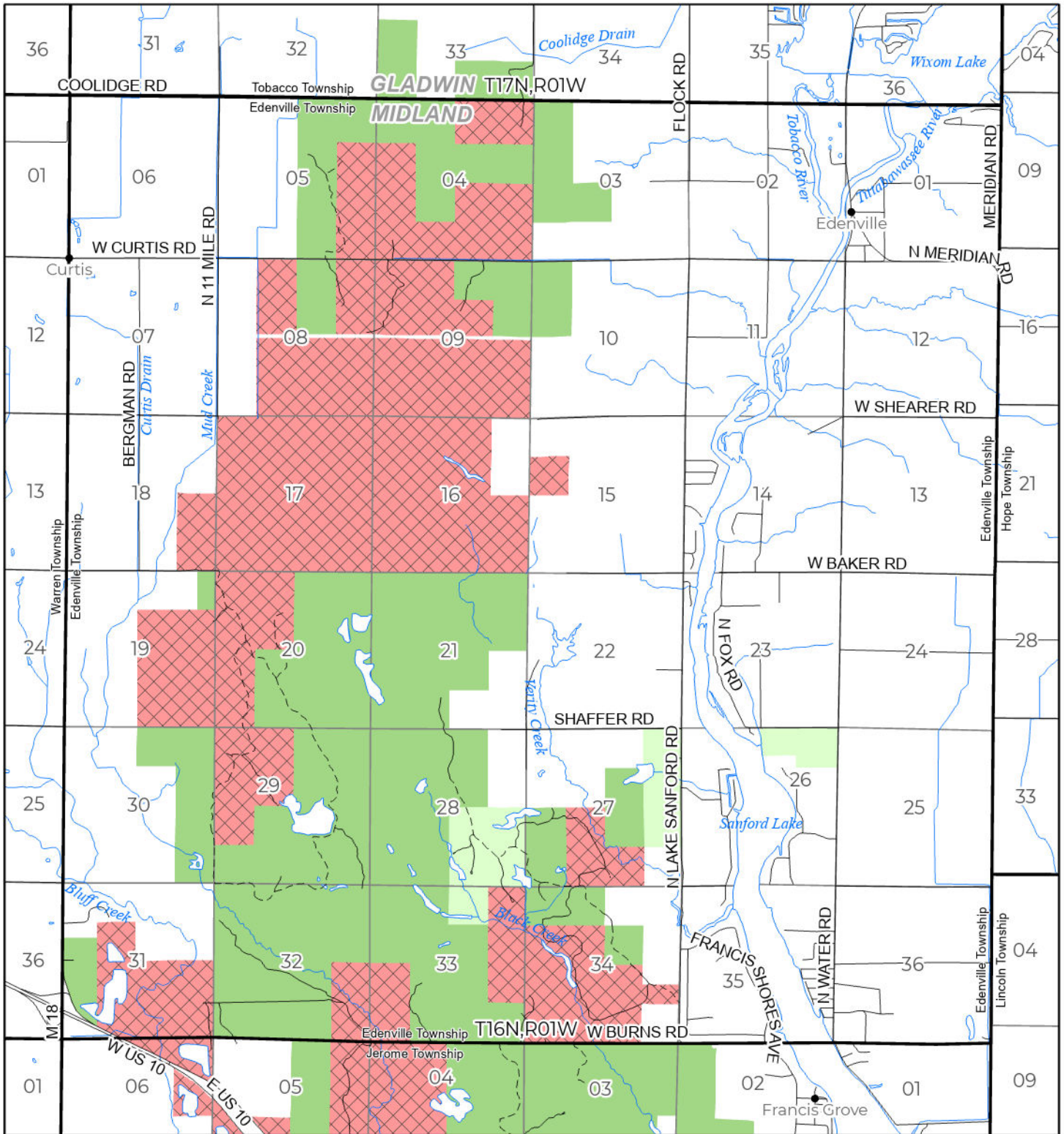


2026 FUELWOOD COLLECTION
MIDLAND COUNTY
T16N,R01W

If you need assistance with this
map, email DNR-Forestry or
call 517-284-5900



State Forest Land Fuelwood Permissions

- Open (Recently Closed Timber Sale)
- Open
- Open (Military Restrictions – Possible closure from May to September)
- Closed

