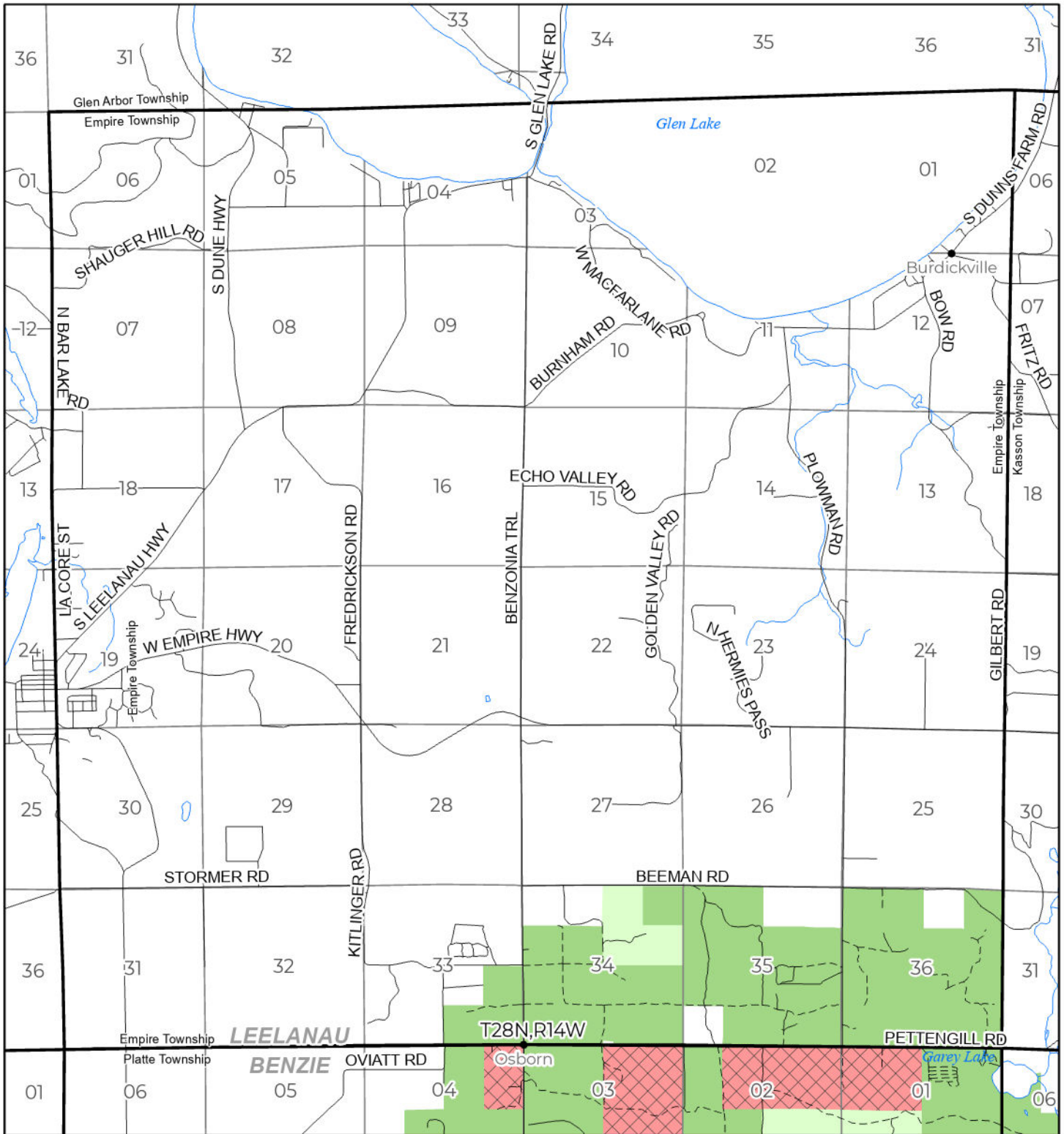


2026 FUELWOOD COLLECTION  
LEELANAU COUNTY  
**T28N,R14W**

If you need assistance with this  
map, email [DNR-Forestry](mailto:DNR-Forestry) or  
call 517-284-5900



State Forest Land Fuelwood Permissions

- Open (Recently Closed Timber Sale)
- Open
- Open (Military Restrictions – Possible closure from May to September)
- Closed

