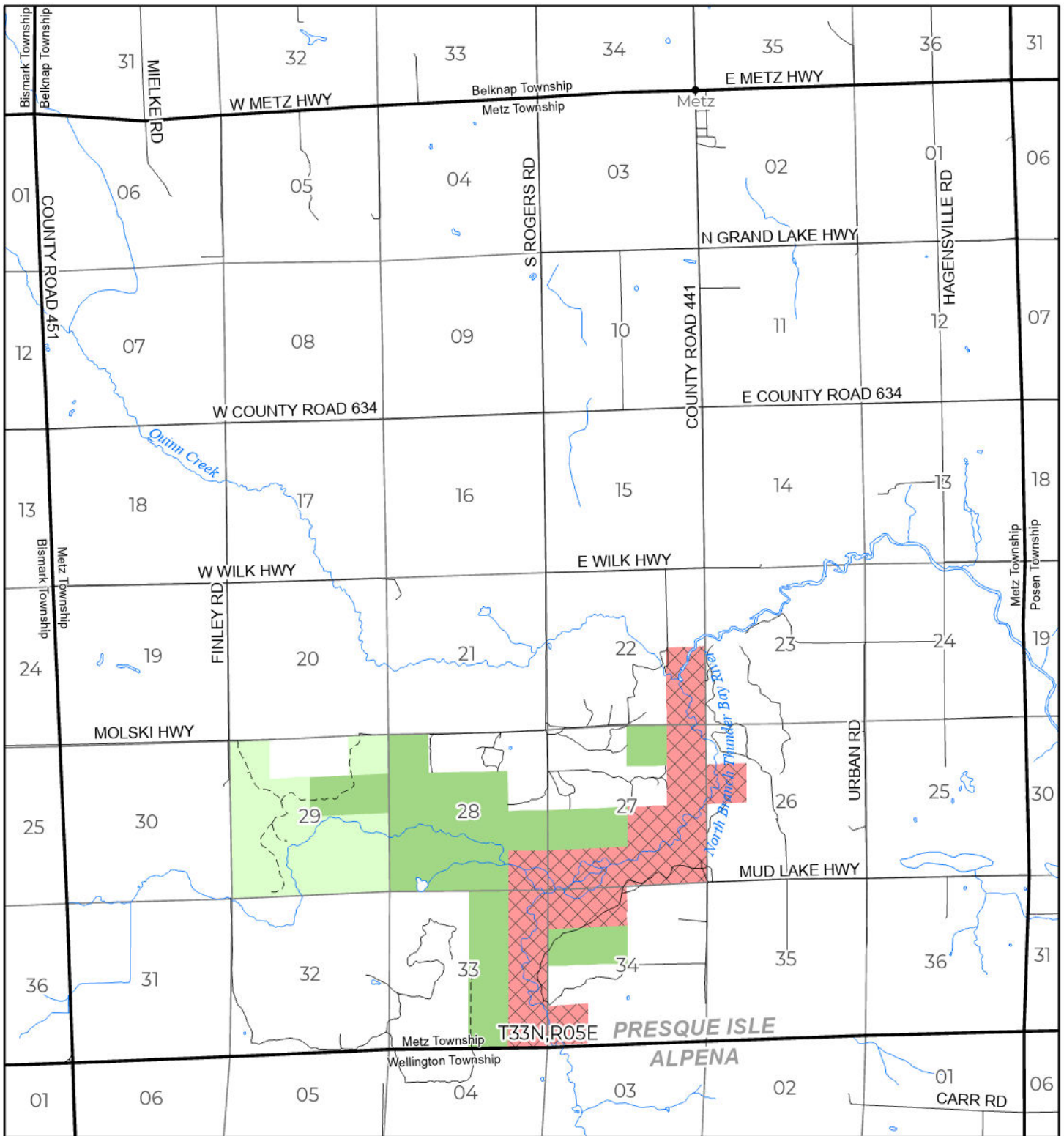


2026 FUELWOOD COLLECTION  
 PRESQUE ISLE COUNTY  
**T33N,R05E**

If you need assistance with this  
 map, email [DNR-Forestry](mailto:DNR-Forestry) or  
 call 517-284-5900



State Forest Land Fuelwood Permissions

- Open (Recently Closed Timber Sale)
- Open
- Open (Military Restrictions – Possible closure from May to September)
- Closed



Miles



Effective: April 1, 2026

