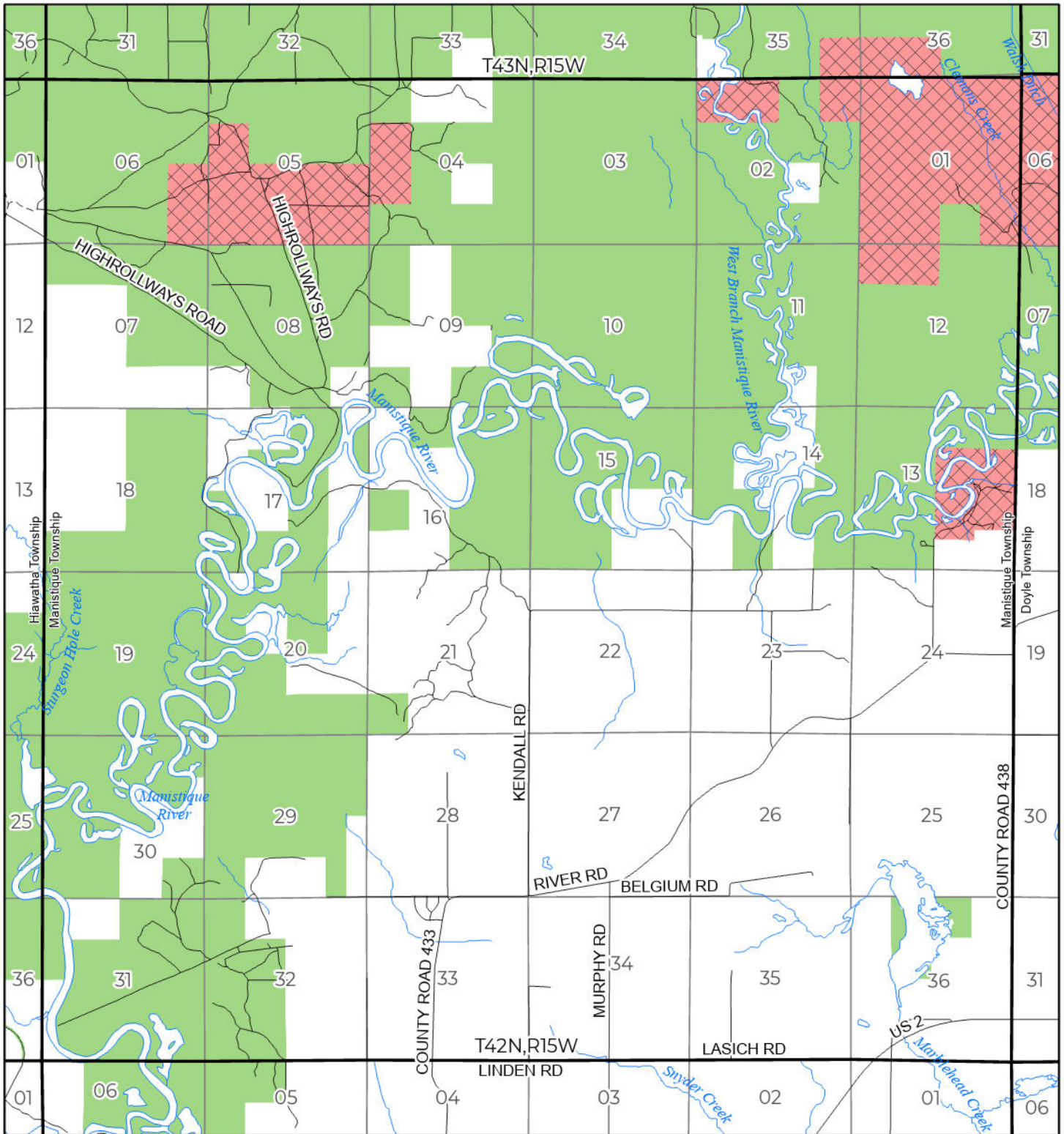


2026 FUELWOOD COLLECTION  
 SCHOOLCRAFT COUNTY  
**T42N,R15W**

If you need assistance with this  
 map, email [DNR-Forestry](mailto:DNR-Forestry) or  
 call 517-284-5900



- State Forest Land Fuelwood Permissions
- Open (Recently Closed Timber Sale)
  - Open
  - Open (Military Restrictions – Possible closure from May to September)
  - Closed

N  
 Miles  
 0 1

Effective: April 1, 2026

