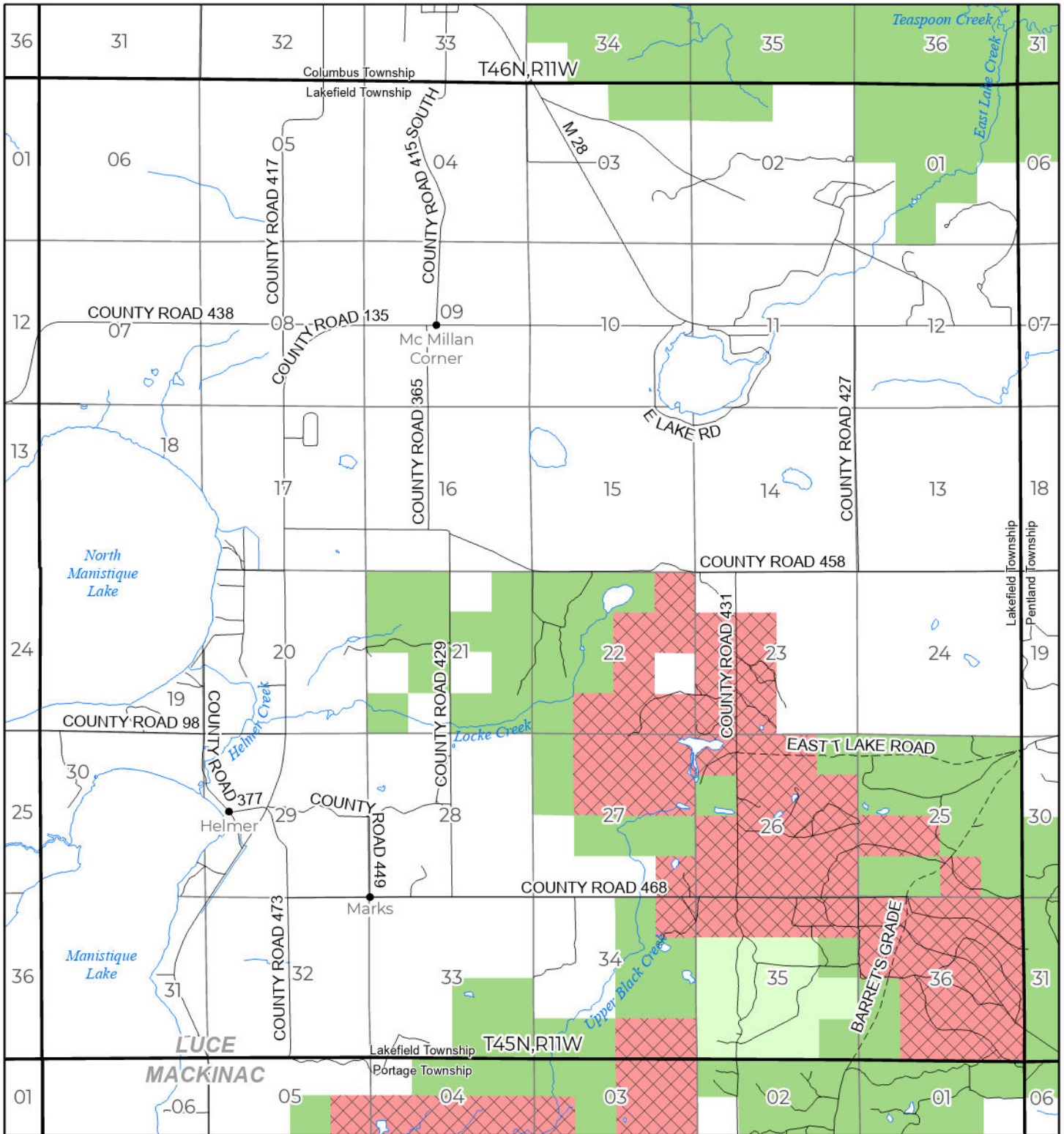


2026 FUELWOOD COLLECTION
 LUCE COUNTY
T45N,R11W

If you need assistance with this
 map, email DNR-Forestry or
 call 517-284-5900



State Forest Land Fuelwood Permissions

- Open (Recently Closed Timber Sale)
- Open
- Open (Military Restrictions – Possible closure from May to September)
- Closed



Miles



Effective: April 1, 2026

