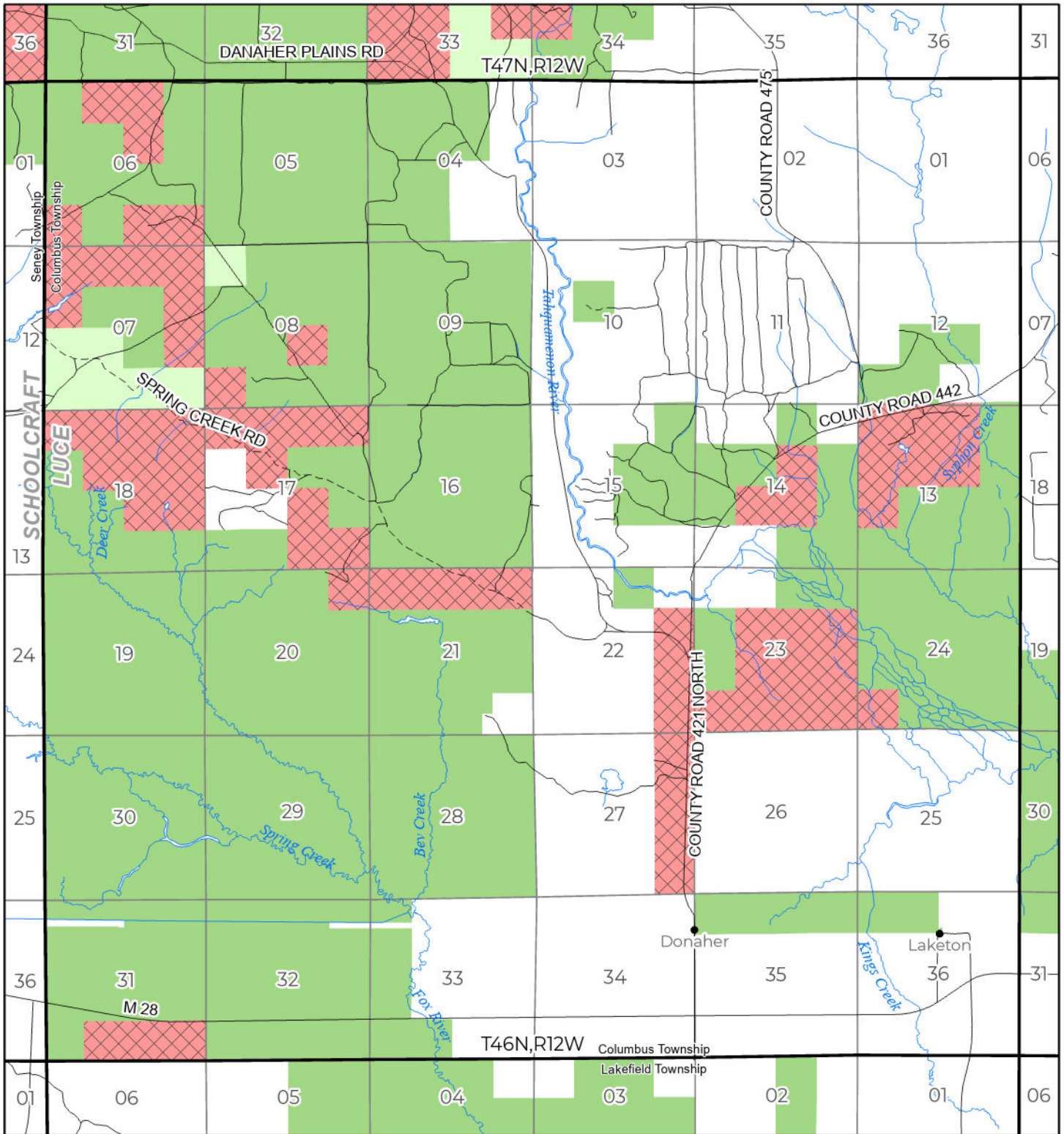


2026 FUELWOOD COLLECTION
 LUCE COUNTY
T46N,R12W

If you need assistance with this
 map, email DNR-Forestry or
 call 517-284-5900



State Forest Land Fuelwood Permissions

- Open (Recently Closed Timber Sale)
- Open
- Open (Military Restrictions – Possible closure from May to September)
- Closed

N

Miles

0 ————— 1

Effective: April 1, 2026