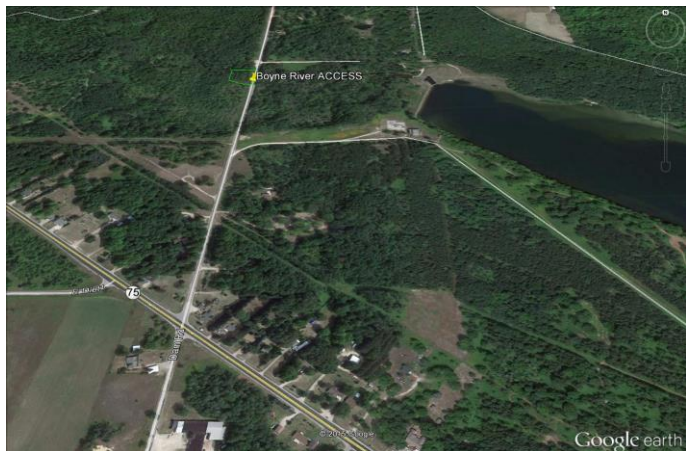


Boyne River



Fish Species

Brook Trout; Brown Trout; Rainbow Trout; Steelhead

Species Description

Brown trout (2-14 inches), rainbow trout (1-11 inches), brook trout (5-6 inches) steelhead (up to 25 inches), Chinook salmon (adults), coho salmon (adults).

Geographic Coordinates

Lat:45.196576 / Long:-84.957426

Noteworthy

The land surrounding this access site is owned by Boyne Mountain USA, but is open for public access. Boyne Mountain USA along with the Friends of the Boyne River group keep the trails and access structures maintained for angler use.

Fishing Regulations

The Boyne River is a designated Type 1 trout stream from its headwaters down to the Kirchner Dam. From the Kirchner Dam downstream to the mouth, the Boyne River is a designated Type 4 trout stream. Please refer to the Inland Trout and Salmon Stream Regulations in the current Michigan Fishing Guide. The fishery here is predominately resident fish, although it is stocked each spring with migratory brown trout and steelhead.

Directions to Site

Access site is from Dam Road just north of M-75, southeast of Boyne City. Parking is along the road on the dirt pull off area, access includes path ways on the east side of Dam Road.

Regional Visitor Information (URL)

visitcharlevoix.com