



# Compartment Review Presentation

Gaylord Forest Management Unit

Compartment 52143

Entry Year 2017

Acreage: 2,096

County Cheboygan

Management Area: Chandler Hills

---

**Revision Date:** 2015-05-12

**Stand Examiner:** Tricia St. Pierre

**Legal Description:**

T34N R03W, Sec. 5, 6, 7, 8, 17, and 18.

**Identified Planning Goals:**

Resource protection, management, health, and sustainability are paramount in this compartment, especially with such a high recreational interface of the Wildwood Hills Pathway users. A long-term management plan should be developed to balance structure and management in perpetuity while determining the best options for invasive and native pest control, all the while maintaining safe and sustainable recreational opportunities. Protocol for prevention, early detection, and rapid response to Invasive Species should also be developed for this compartment.

**Soil and topography:**

This compartment is rather hilly in spots, with geomorphology relating to ground moraines, lake plains, outwash plains, and till plains. There are few exceptionally steep slopes, but there are many undulating hills and bowls of variable sizes and slope. Soils are dominated largely by Kalkaska sands, and to a lesser extent Blue Lake loamy sands and Leelanau loamy sands. The northwest parcels have a little variability in their soils with the inclusion of some Roscommon muck and Cheboygan loamy sand, along with one small drainage.

**Ownership Patterns, Development, and Land Use in and Around the Compartment:**

There is some parcelization of larger private blocks within this compartment. The main body of State ownership surrounds a private association and several private landowners, and there are also a few outlying State-owned parcels of various acreages, surrounded predominately by private ownership. There is the potential for greater parcelization within some of the larger private chunks of land which would increase the State-Public interface greatly in this area. Oil and gas development is non-existent within this compartment.

**Unique Natural Features:**

There are a few natural features within this compartment, although the potential exists for others yet to be verified. Occurrence of red-shouldered hawk is documented both in and around this compartment. There are no other known MNFI hits.

**Archeological, Historical, and Cultural Features:**

There are potential archaeological sites within this compartment. Historically, this compartment was largely harvested for its hardwood timber, as many of the current stands are 70-100 years old, resulting from excessive logging of the resource.

**Special Management Designations or Considerations:**

This compartment receives a high volume of recreational users year round, making it especially susceptible to invasive species introductions. Emerald Ash Borer, Beech Bark Disease, Dutch Elm Disease, honeysuckle, knapweed, mullein, and autumn olive are all present in this compartment, and there are purported colonies of garlic mustard, but this needs to be verified. This compartment should be monitored closely for other invaders, especially Asian Longhorned Beetle, barberry, and Thousand Cankers Disease (specific to the walnut growing in the southwest corner of this compartment) to prevent spread and eradicate the problem as quickly as possible.

A large amount of the hardwood component within this compartment has entered a maturity in diameter distribution that will require attention in the next few inventory cycles, but the proliferation of beech regeneration and the impending beech bark disease will require greater thought and likely less common management strategies to get desirable, healthy regeneration into place.

**Watershed and Fisheries Considerations:**

This compartment contains Cedar Creek, a designated trout stream. Best management practices should be followed to avoid erosion and sedimentation. Prescribed management actions are appropriate for the protection of this stream.

**Wildlife Habitat Considerations:**

Treatments in this compartment will encourage aspen re-growth benefiting deer, grouse, wild turkey and woodcock. Canopy gaps within hardwoods will be planted to hard and soft mast shrub/tree species to promote wildlife values.

Openings are prescribed to be maintained and supplemented with hard and soft mast plantings benefiting deer, grouse, wild turkey, and woodcock.

### **Mineral Resource and Development Concerns and/or Restrictions**

Sections 5-8, 17 & 18, T34N R3W, Cheboygan County

Surface sediments consist of ice-contact outwash sand and gravel and minor lacustrine sand and gavel. The glacial drift thickness varies between 100 and 600 feet. The Devonian Traverse Group subcrops below the glacial drift. The Traverse is quarried for stone and cement products and a brick plant is located one mile to the north. Gravel pits are located in the area and there is good potential. The nearest significant oil and gas production, the Antrim Shale gas play, is located 6 miles to the south. The Antrim Shale is absent this far north. All of the state land in the compartment is under lease for oil and gas development. Encana produced oil from the Collingwood Shale from a couple of wells in the area and were permitted for another well in Section 17. However, the oil wells were not considered to be very productive, and Encana has since divested its interests in the state. Marathon acquired Encana's leases but does not have interest in the Collingwood or Cheboygan County. Thus, although parcels are under lease, further oil and gas potential in this area is likely to be limited.

### **Vehicle Access:**

Vehicular access is good in snow-off condition, but is limited in the winter by seasonal county roads, also by snowmobile and ski trails. There are many old logging roads that meander through this compartment that can still be identified and used for less-invasive access to the interior. Caution should be taken in all seasons to mind for recreational vehicles (ORVs, ATVs, dirtbikes, snowmobiles) and trail users (mountain bikers, hikers, and horseback riders).

### **Survey Needs:**

There are no existing survey needs. Many of the corners have been established and are recorded.

### **Recreational Facilities and Opportunities:**

There are many recreational opportunities within this compartment. The MCCCT dirtbike trail, Tomahawk (ORV) A Loop, and the Wildwood Hills Pathway (all season non-motorized trail) run through this compartment. Wildwood Hills Pathway meanders through much of this compartment and is very popular in all seasons. It becomes a groomed ski and snowshoe trail in the winter, while providing horseback riding, biking, hiking, and running opportunities in the summer. This and the surrounding compartments are widely used for other recreational pursuits, like hunting, camping, mushroom hunting, and geo-caching.

### **Fire Protection:**

There are not many highly volatile or fire dependent regimes within this compartment, however the terrain and limited water access could hinder response time and suppression efforts. The nearest water source is possibly Berry Creek to the south or perhaps the Sturgeon River or Burt Lake. Cedar Creek retreats underground and reemerges on private land.

### **Additional Compartment Information:**

The following reports from the Inventory are attached:

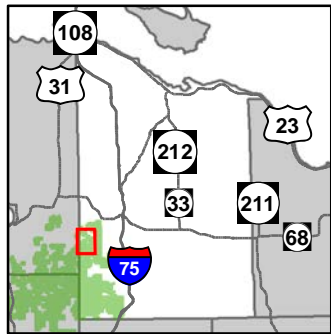
- Total Acres by Cover Type and Age Class**
- Cover Type by Harvest Method**
- Proposed Treatments – No Limiting Factors**
- Proposed Treatments – With Limiting Factors**
- Stand Details (Forested and Nonforested)**
- Dedicated and Proposed Special Conservation Areas**
- Site Condition Details**

The following information is displayed, where pertinent, on the attached compartment maps:

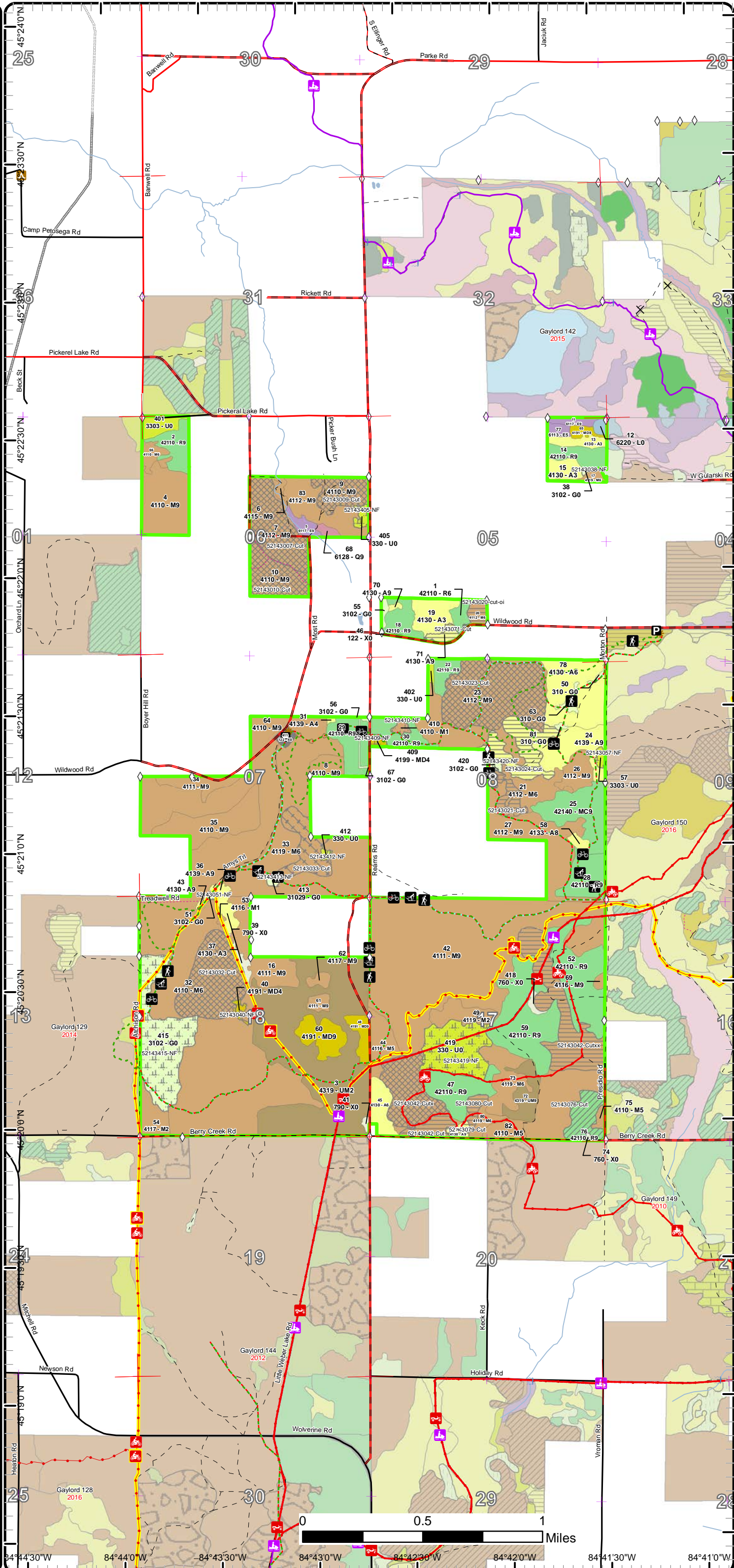
- Base feature information, stand boundaries, cover types, and numbers**
- Proposed treatments**
- Site condition boundaries**
- Details on the road access system**

# Cover Type & Treatments Map

Compartment: 143  
 T34N,R03W, Sec. 5-8, 17, 18  
 County: Cheboygan  
 Unit: Gaylord  
 Mgmt Area: Chandler Hills  
 YOE: 2017  
 Acres: 2096 GIS Calculated  
 Examiner: Tricia St. Pierre  
 Map Revised: 3/24/2016  
 Map Phase: Post-Review



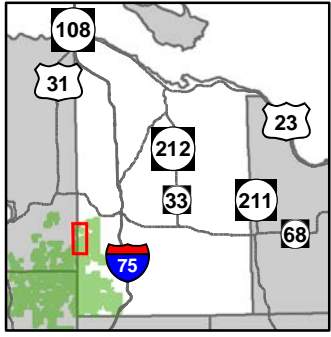
- Miris Corners
- Remonumented Section Corners
- Field Grade GPS Corners
- Bike Trails
- Motorcycle Trails (DNR License)
- Hiking Trails
- MCCCT Trails
- ORV Trails
- ORV Routes
- Ski Trails
- Snowmobile Trails
- Designated Hiking Trails
- Designated Bicycle Trails
- Designated Ski Trails
- Designated Snowshoe Trails
- ORV License & Trail Permit
- Designated ATV
- Designated ORV Routes
- Designated Snowmobile Trails
- Michigan Cross Country Cycle Trail (MCCCT)
- Trailhead
- Parking Lot
- County Paved Roads
- Paved Roads
- County Gravel Roads
- Poor Dirt Roads
- County Poor Dirt Roads
- Trail (Non-Recreation)
- Closed Roads
- Rivers
- Compartment Boundary
- Treatments**
- Selection (Group, Single Tree)
- Clearcut (w/Reserves)
- Other Treatment - See Comments
- Salvage
- Thinning (Crown, Low, Systematic)
- Forest Covertype**
- 411 - Northern Hardwood
- 413 - Aspen
- 419 - Mixed Upland Deciduous
- 421 - Planted Pines
- 430 - Upland Mixed Fores
- 611 - Lowland Deciduous Forest
- 612 - Lowland Coniferous Forest
- Non-Forest Covertype**
- 122 - Roads/Parking Lot
- 310 - Herbaceous Openland
- 330 - Low Density Trees
- 622 - Lowland Shrub
- 790 - Other Bare/Sparsely Vegetated
- Lakes



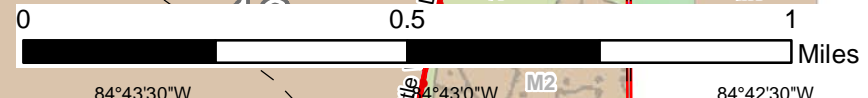
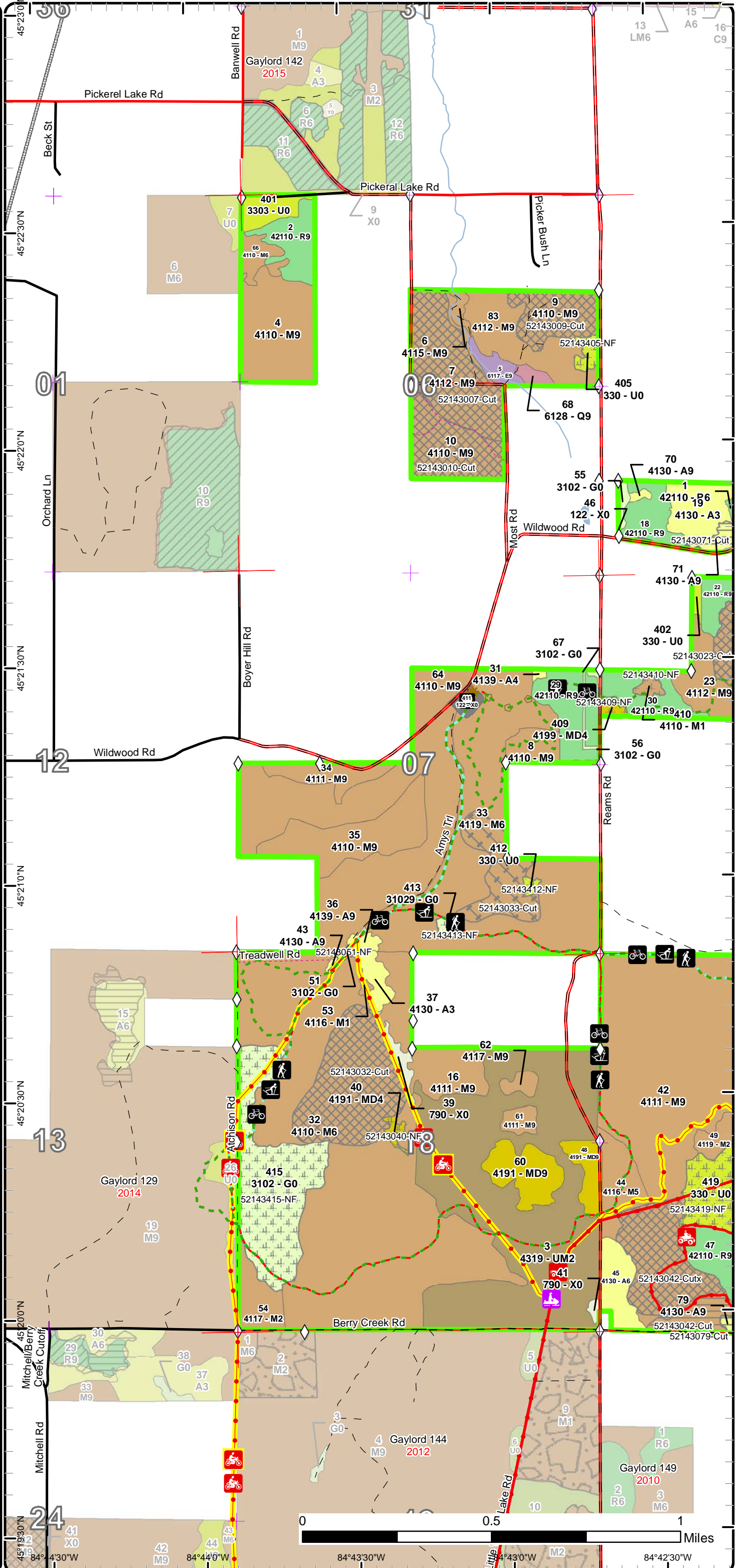
84°44'30"W 84°44'0"W 84°43'30"W 84°43'0"W 84°42'30"W 84°42'0"W 84°41'30"W 84°41'0"W  
 45°24'0"N 45°23'30"N 45°23'0"N 45°22'30"N 45°22'0"N 45°21'30"N 45°21'0"N 45°20'30"N 45°20'0"N 45°19'30"N 45°19'0"N

# Cover Type & Treatments Map

Compartment: 143  
 T34N,R03W, Sec. 5-8, 17, 18  
 County: Cheboygan  
 Unit: Gaylord  
 Mgmt Area: Chandler Hills  
 YOE: 2017  
 Acres: 2096 GIS Calculated  
 Examiner: Tricia St. Pierre  
 Map Revised: 3/24/2016  
 Map Phase: Post-Review



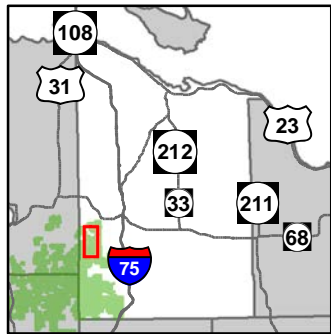
- Miris Corners
- + Remonumented Section Corners
- ◇ Field Grade GPS Corners
- Bike Trails
- Motorcycle Trails (DNR License)
- Hiking Trails
- MCCCT Trails
- ORV Trails
- ORV Routes
- Ski Trails
- Snowmobile Trails
- - - Designated Hiking Trails
- - - Designated Bicycle Trails
- - - Designated Ski Trails
- Designated Snowshoe Trails
- · - · - ORV License & Trail Permit
- - - - - Designated ATV
- - - - - Designated ORV Routes
- - - - - Designated Snowmobile Trails
- - - - - Michigan Cross Country Cycle Trail (MCCCT)
- Trailhead
- Parking Lot
- County Paved Roads
- Paved Roads
- County Gravel Roads
- - - Poor Dirt Roads
- - - County Poor Dirt Roads
- · - · - Trail (Non-Recreation)
- Rivers
- - - - - Pipeline
- Compartment Boundary
- Treatments**
- Selection (Group, Single Tree)
- Clearcut (w/Reserves)
- Other Treatment - See Comments
- Salvage
- Forest Covertypes**
- 411 - Northern Hardwood
- 413 - Aspen
- 419 - Mixed Upland Deciduous
- 421 - Planted Pines
- 430 - Upland Mixed Fores
- 611 - Lowland Deciduous Forest
- 612 - Lowland Coniferous Forest
- Non-Forest Covertypes**
- 122 - Roads/Parking Lot
- 310 - Herbaceous Openland
- 330 - Low Density Trees
- 790 - Other Bare/Sparsely Vegetated
- Lakes



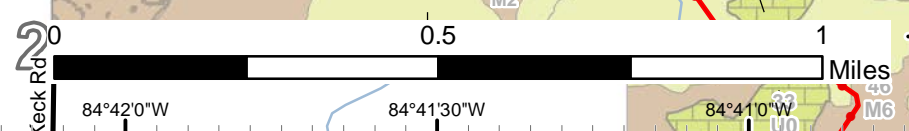
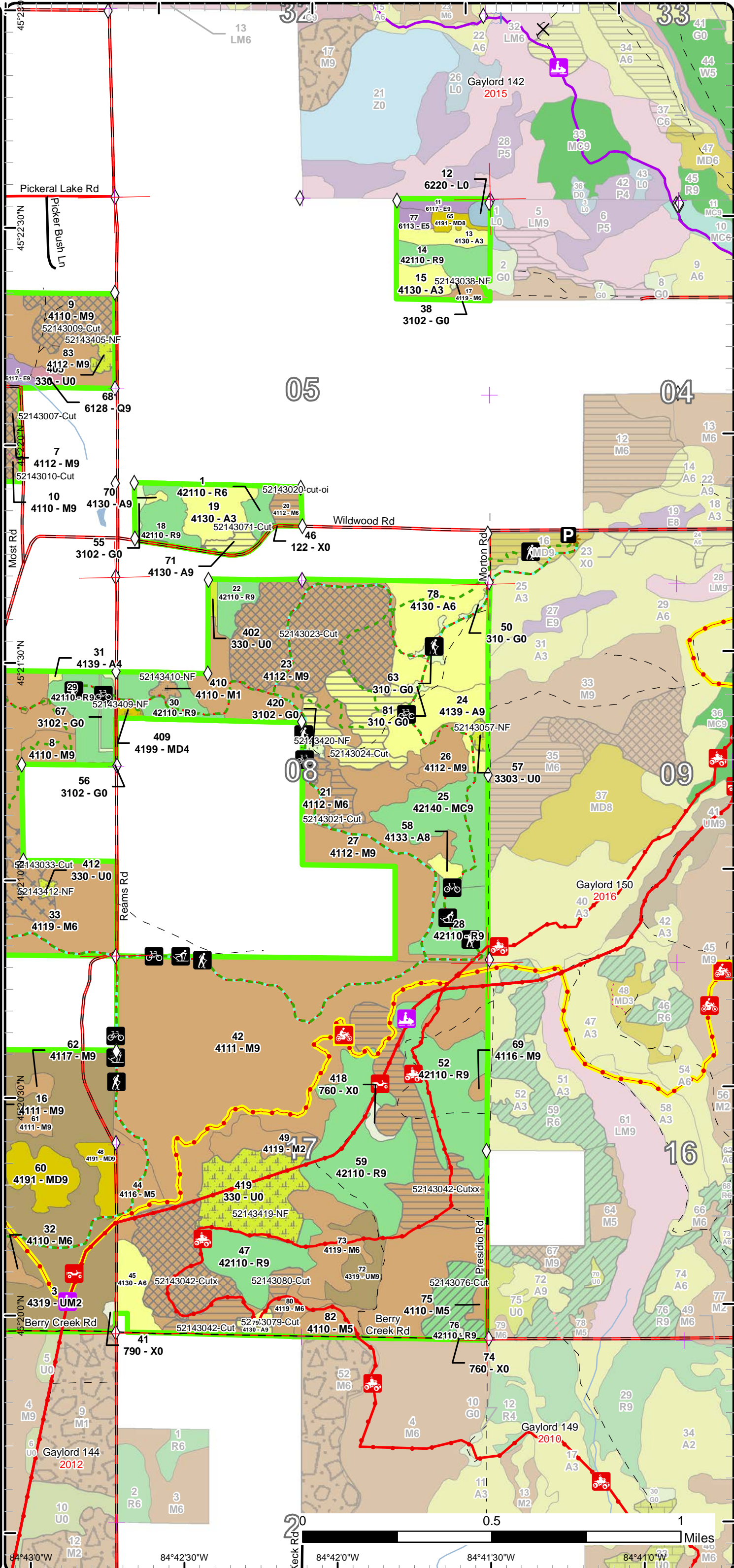
45°19'30"N 84°43'0"W 84°43'30"W 84°43'0"W 84°42'30"W  
 45°20'30"N 45°21'30"N 45°22'30"N 45°23'0"N  
 13 LM6 15 A6 16 C9  
 01 07 12 13 18 24

# Cover Type & Treatments Map

Compartment: 143  
 T34N,R03W, Sec. 5-8, 17, 18  
 County: Cheboygan  
 Unit: Gaylord  
 Mgmt Area: Chandler Hills  
 YOE: 2017  
 Acres: 2096 GIS Calculated  
 Examiner: Tricia St. Pierre  
 Map Revised: 3/24/2016  
 Map Phase: Post-Review

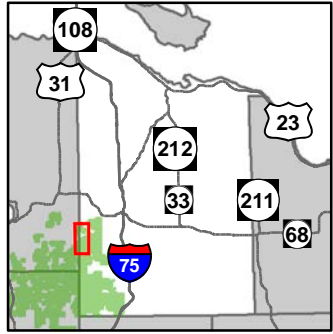


- Miris Corners
- + Remonumented Section Corners
- ◇ Field Grade GPS Corners
- Bike Trails
- Motorcycle Trails (DNR License)
- Hiking Trails
- MCCCT Trails
- ORV Trails
- ORV Routes
- Ski Trails
- Snowmobile Trails
- - - Designated Hiking Trails
- - - Designated Bicycle Trails
- - - Designated Ski Trails
- Designated Snowshoe Trails
- ORV License & Trail Permit
- - - Designated ATV
- - - Designated ORV Routes
- - - Designated Snowmobile Trails
- Michigan Cross Country Cycle Trail (MCCCT)
- Gate
- Culverts
- Trailhead
- Parking Lot
- County Paved Roads
- - - Paved Roads
- - - County Gravel Roads
- - - Poor Dirt Roads
- - - County Poor Dirt Roads
- - - Trail (Non-Recreation)
- - - Closed Roads
- Rivers
- Compartment Boundary
- ▨ Selection (Group, Single Tree)
- ▨ Clearcut (w/Reserves)
- ▨ Other Treatment - See Comments
- ▨ Salvage
- ▨ Thinning (Crown, Low, Systematic)
- Forest Covertype**
- ▨ 411 - Northern Hardwood
- ▨ 413 - Aspen
- ▨ 419 - Mixed Upland Deciduous
- ▨ 421 - Planted Pines
- ▨ 430 - Upland Mixed Fores
- ▨ 611 - Lowland Deciduous Forest
- ▨ 612 - Lowland Coniferous Forest
- Non-Forest Covertype**
- ▨ 122 - Roads/Parking Lot
- ▨ 310 - Herbaceous Openland
- ▨ 330 - Low Density Trees
- ▨ 622 - Lowland Shrub
- ▨ 790 - Other Bare/Sparsely Vegetated
- ▨ Lakes

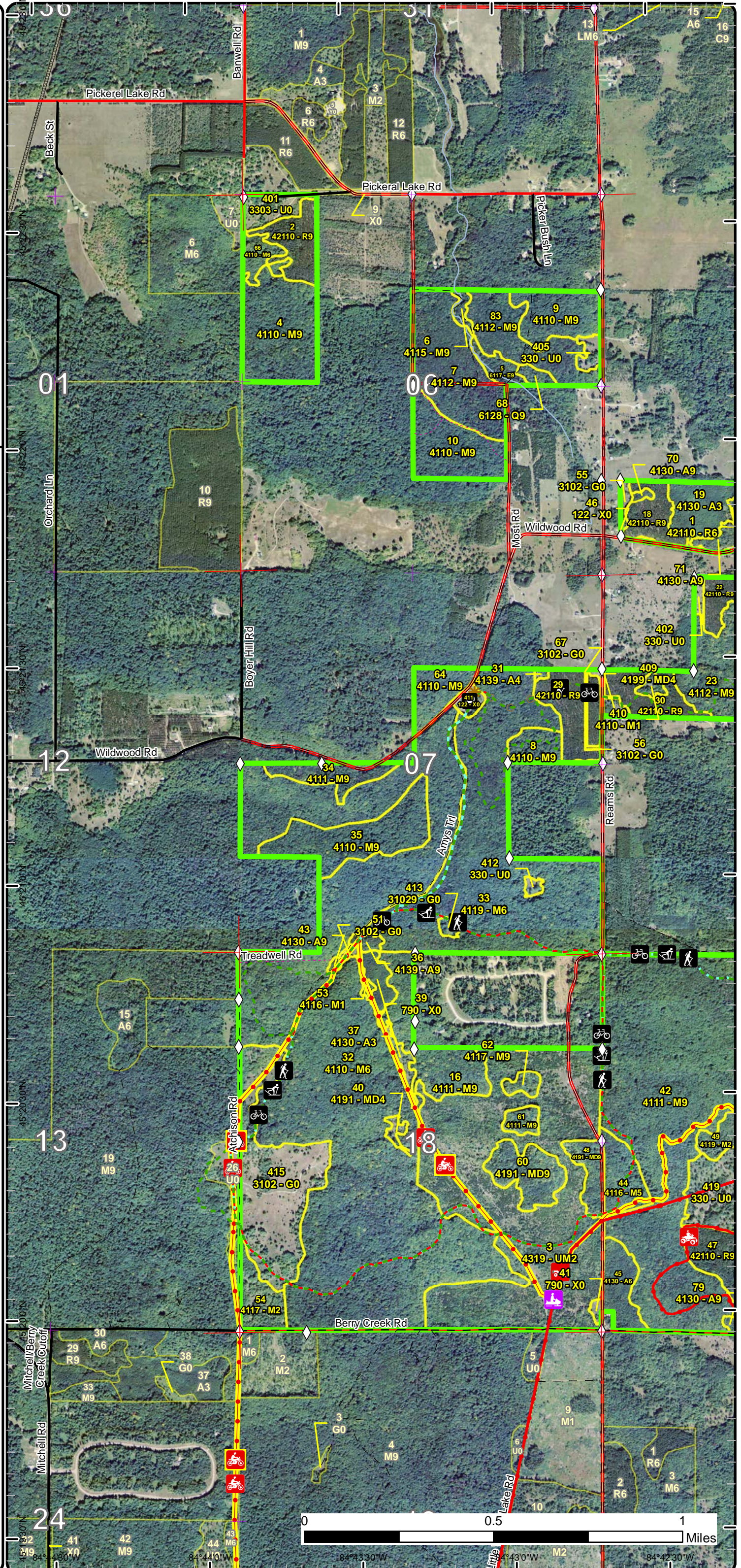


# Stand Boundary Map

Compartment: 143  
 T34N,R03W, Sec. 5-8, 17, 18  
 County: Cheboygan  
 Unit: Gaylord  
 Mgmt Area: Chandler Hills  
 YOE: 2017  
 Acres: 2096 GIS Calculated  
 Examiner: Tricia St. Pierre  
 Map Revised: 3/24/2016  
 Map Phase: Post-Review

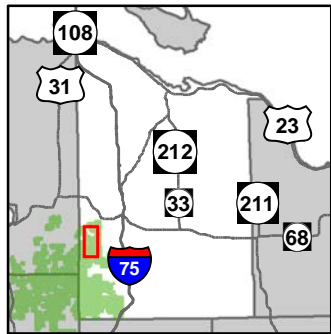


- Miris Corners
- Remonumented Section Corners
- Field Grade GPS Corners
- Bike Trails
- Motorcycle Trails (DNR License)
- Hiking Trails
- MCCCT Trails
- ORV Trails
- ORV Routes
- Ski Trails
- Snowmobile Trails
- Designated Hiking Trails
- Designated Bicycle Trails
- Designated Ski Trails
- Designated Snowshoe Trails
- ORV License & Trail Permit
- Designated ATV
- Designated Snowmobile Trails
- Michigan Cross Country Cycle Trail (MCCCT)
- Trailhead
- Parking Lot
- County Paved Roads
- Paved Roads
- County Gravel Roads
- Poor Dirt Roads
- County Poor Dirt Roads
- Trail (Non-Recreation)
- Rivers
- Pipeline
- Compartment Boundary
- Stand Boundaries
- 411 - Northern Hardwood
- 413 - Aspen
- 419 - Mixed Upland Deciduous
- 421 - Planted Pines
- 430 - Upland Mixed Fores
- 611 - Lowland Deciduous Forest
- 612 - Lowland Coniferous Forest
- 122 - Roads/Parking Lot
- 310 - Herbaceous Openland
- 330 - Low Density Trees
- 790 - Other Bare/Sparsely Vegetated

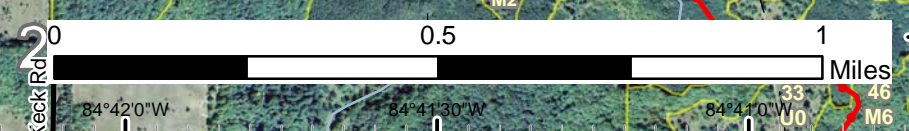
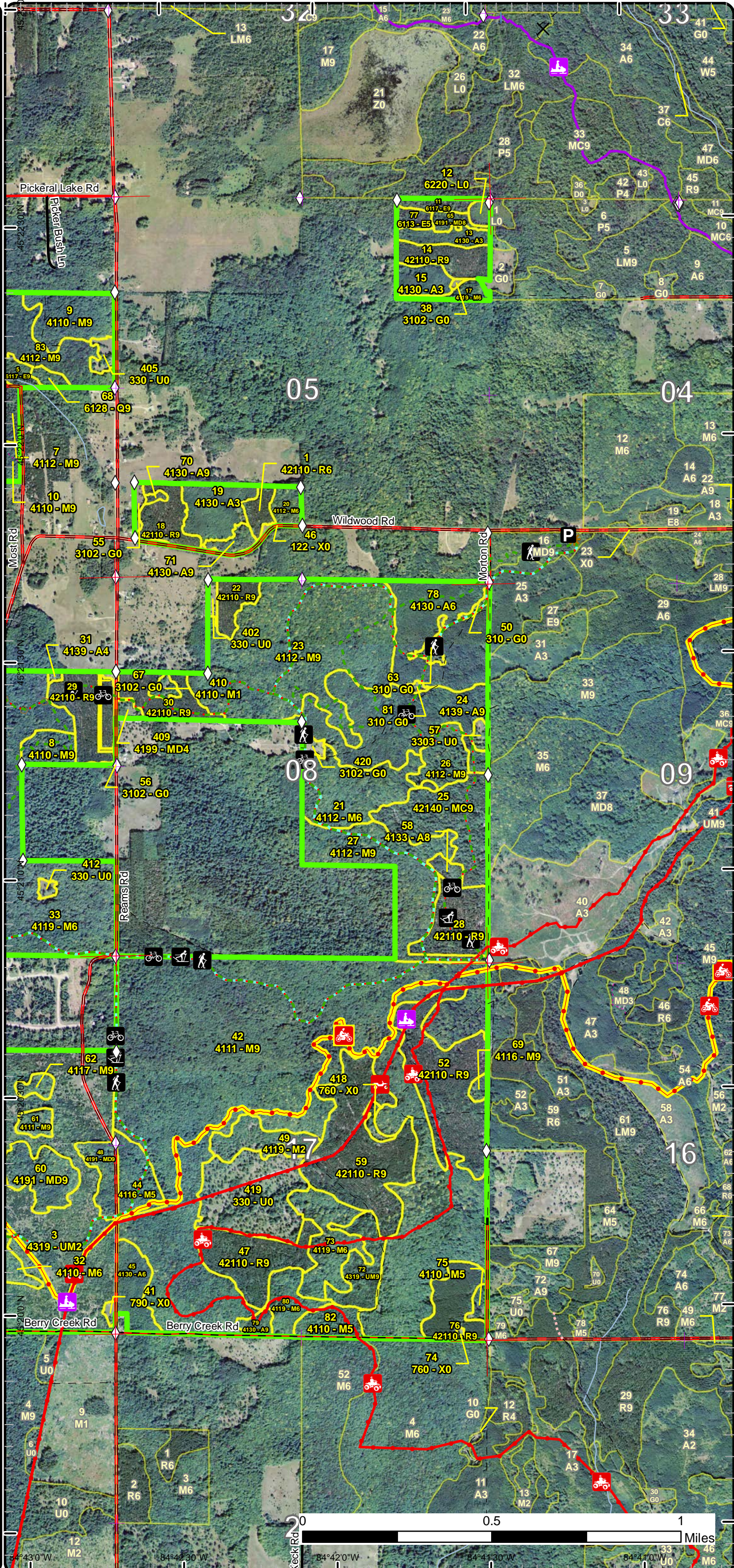


# Stand Boundary Map

Compartment: 143  
 T34N,R03W, Sec. 5-8, 17, 18  
 County: Cheboygan  
 Unit: Gaylord  
 Mgmt Area: Chandler Hills  
 YOE: 2017  
 Acres: 2096 GIS Calculated  
 Examiner: Tricia St. Pierre  
 Map Revised: 3/24/2016  
 Map Phase: Post-Review

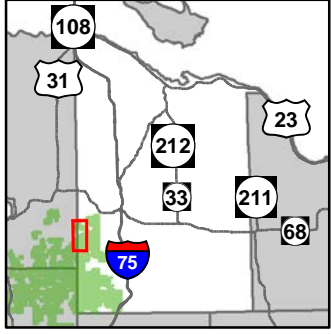


- Miris Corners
- + Remonumented Section Corners
- ◇ Field Grade GPS Corners
- Bike Trails
- Motorcycle Trails (DNR License)
- Hiking Trails
- MCCCT Trails
- ORV Trails
- ORV Routes
- Ski Trails
- Snowmobile Trails
- - - Designated Hiking Trails
- - - Designated Bicycle Trails
- - - Designated Ski Trails
- Designated Snowshoe Trails
- ORV License & Trail Permit
- - - Designated ATV Routes
- - - Designated Snowmobile Trails
- Michigan Cross Country Cycle Trail (MCCCT)
- X Gate
- Culverts
- Trailhead
- Parking Lot
- County Paved Roads
- Paved Roads
- County Gravel Roads
- Poor Dirt Roads
- County Poor Dirt Roads
- - - Trail (Non-Recreation)
- - - Closed Roads
- Rivers
- Compartment Boundary
- Stand Boundaries
- 411 - Northern Hardwood
- 413 - Aspen
- 419 - Mixed Upland Deciduous
- 421 - Planted Pines
- 430 - Upland Mixed Fores
- 611 - Lowland Deciduous Forest
- 612 - Lowland Coniferous Forest
- 122 - Roads/Parking Lot
- 310 - Herbaceous Openland
- 330 - Low Density Trees
- 622 - Lowland Shrub
- 790 - Other Bare/Sparsely Vegetated

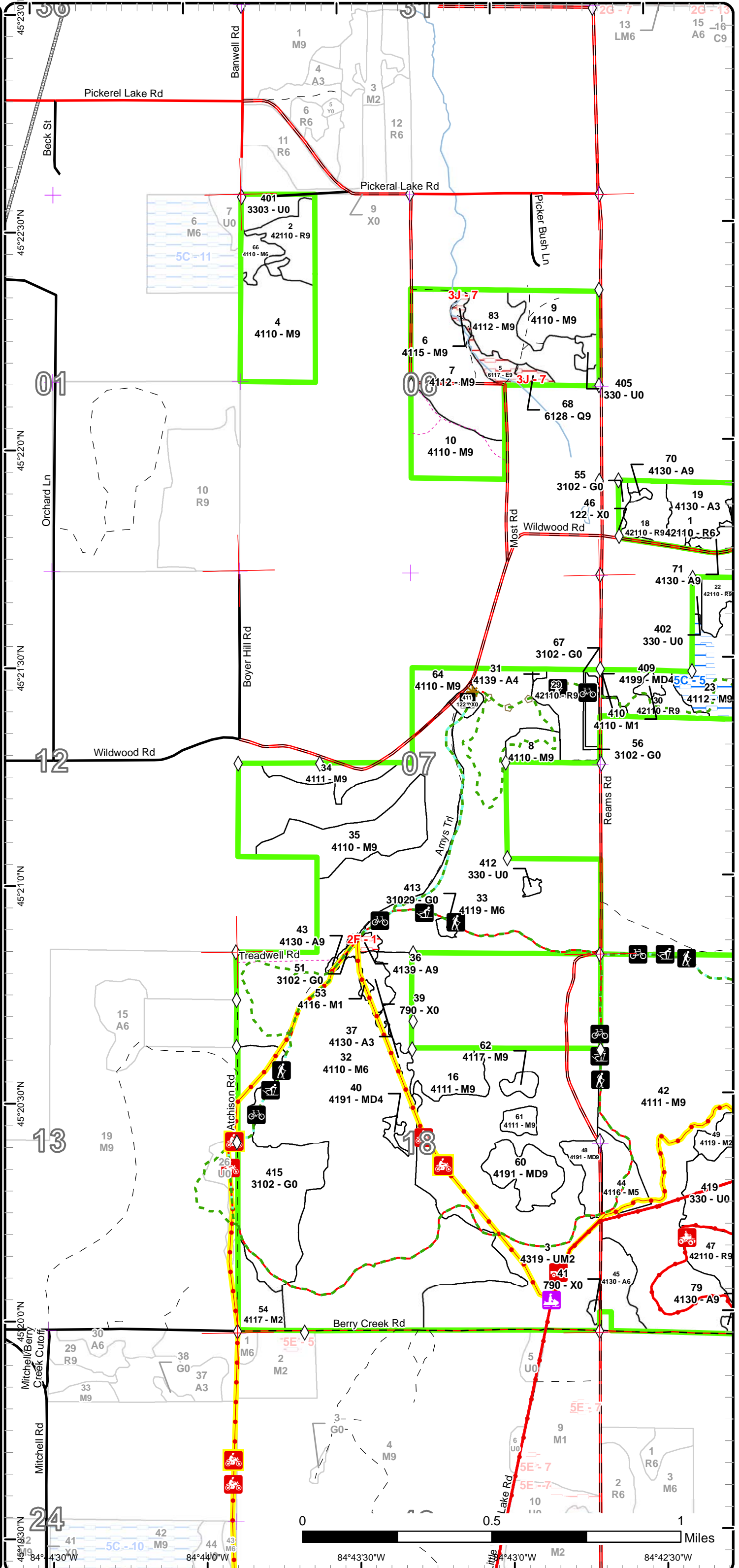


# Special Conservation Areas & Site Conditions Map

Compartment: 143  
 T34N,R03W, Sec. 5-8, 17, 18  
 County: Cheboygan  
 Unit: Gaylord  
 Mgmt Area: Chandler Hills  
 YOE: 2017  
 Acres: 2096 GIS Calculated  
 Examiner: Tricia St. Pierre  
 Map Revised: 3/24/2016  
 Map Phase: Post-Review



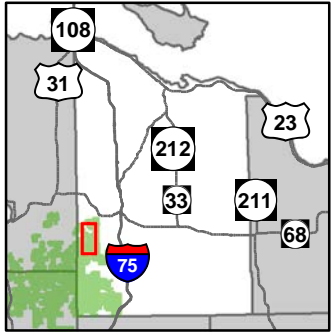
- Miris Corners
- + Remonumented Section Corners
- ◇ Field Grade GPS Corners
- Bike Trails
- Motorcycle Trails (DNR License)
- Hiking Trails
- MCCCT Trails
- ORV Trails
- ORV Routes
- Ski Trails
- Snowmobile Trails
- - - Designated Hiking Trails
- - - Designated Bicycle Trails
- - - Designated Ski Trails
- Designated Snowshoe Trails
- · - · - ORV License & Trail Permit
- - - - - Designated ATV
- - - - - Designated ORV Routes
- - - - - Designated Snowmobile Trails
- - - - - Michigan Cross Country Cycle Trail (MCCCT)
- Trailhead
- Parking Lot
- County Paved Roads
- Paved Roads
- County Gravel Roads
- Poor Dirt Roads
- County Poor Dirt Roads
- · - · - Trail (Non-Recreation)
- Rivers
- - - - - Pipeline
- - - - - Compartment Boundary
- - - - - Available w/ Constraints
- - - - - Unavailable
- 5C: Delay treatment for age/size class diversity or exceptional site quality
- 2F: Too steep
- 3J: Water quality / BMPs (stream, river, or lake)
- Stand Boundaries
- Special Conservation Areas
- Cold Water Streams



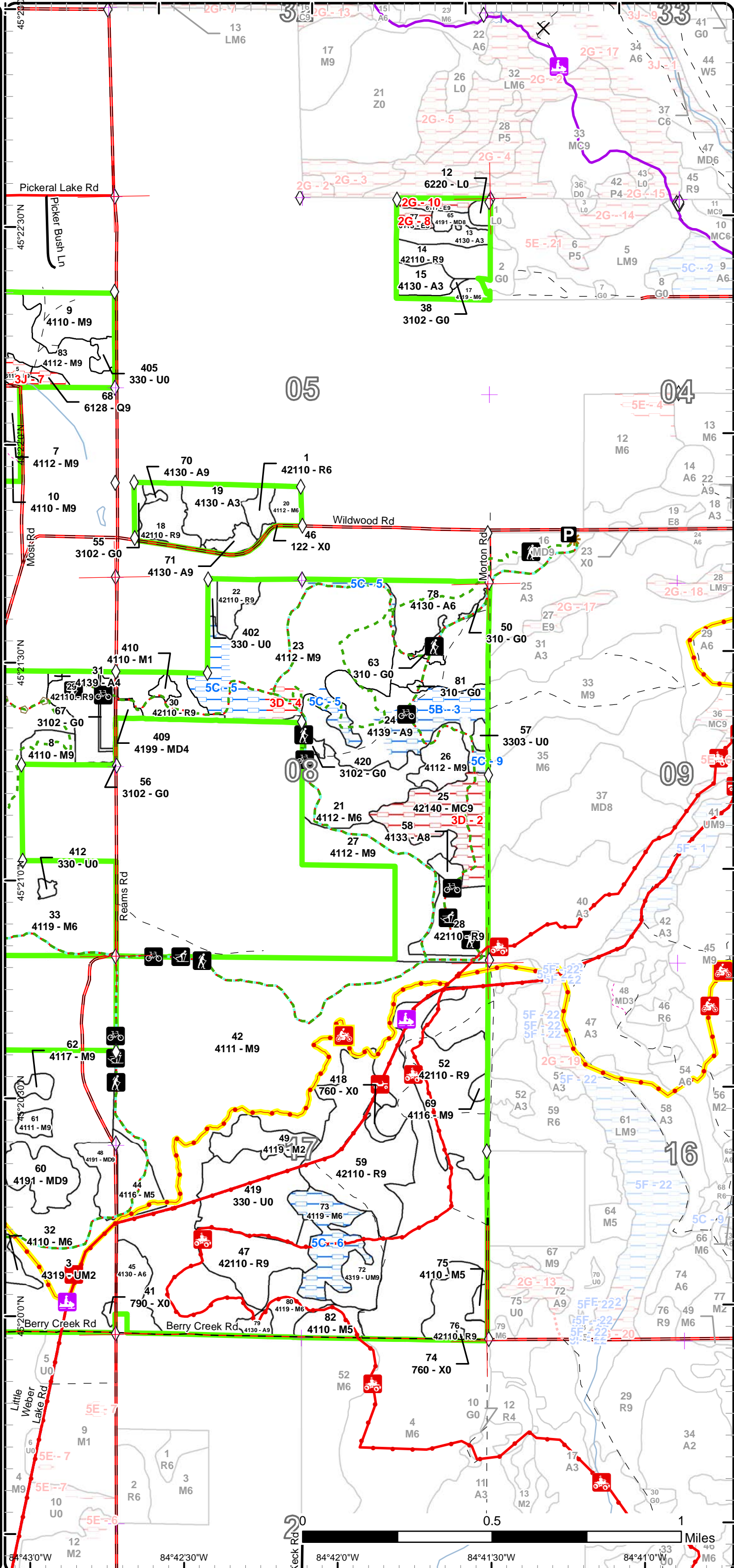


# Special Conservation Areas & Site Conditions Map

Compartment: 143  
 T34N,R03W, Sec. 5-8, 17, 18  
 County: Cheboygan  
 Unit: Gaylord  
 Mgmt Area: Chandler Hills  
 YOE: 2017  
 Acres: 2096 GIS Calculated  
 Examiner: Tricia St. Pierre  
 Map Revised: 3/24/2016  
 Map Phase: Post-Review



- Miris Corners
- + Remonumented Section Corners
- ◇ Field Grade GPS Corners
- Bike Trails
- Motorcycle Trails (DNR License)
- Hiking Trails
- MCCCT Trails
- ORV Trails
- ORV Routes
- Ski Trails
- Snowmobile Trails
- - - Designated Hiking Trails
- - - Designated Bicycle Trails
- - - Designated Ski Trails
- Designated Snowshoe Trails
- ORV License & Trail Permit
- - - Designated ATV
- - - Designated ORV Routes
- - - Designated Snowmobile Trails
- - - Michigan Cross Country Cycle Trail (MCCCT)
- X Gate
- Culverts
- Trailhead
- Parking Lot
- County Paved Roads
- Paved Roads
- County Gravel Roads
- - - Poor Dirt Roads
- - - County Poor Dirt Roads
- - - Trail (Non-Recreation)
- - - Closed Roads
- Rivers
- Compartment Boundary
- - - Available w/ Constraints
- - - Unavailable
- 5B: Maintain for regeneration purposes
- 5C: Delay treatment for age/size class diversity or exceptional site quality
- 2G: Too wet (sensitive soils, does not include access issues)
- 3D: Recreational / Scenic values
- 3J: Water quality / BMPs (stream, river, or lake)
- Stand Boundaries
- Special Conservation Areas
- Cold Water Streams





Age Class

	Non-Forest	0-9	10-19	20-29	30-39	40-49	50-59	60-69	70-79	80-89	90-99	100-109	110-119	120-129	130-139	140-149	150+	Uneven-Aged	Total
Aspen	0	0	35	0	0	54	0	52	4	1	5	0	0	0	0	0	0	1	152
Bare/Sparsely Vegetated	7	0	0	0	0	0	0	0	0	0	0	0	0	0	0	0	0	0	7
Herbaceous Openland	66	0	0	0	0	0	0	0	0	0	0	0	0	0	0	0	0	0	66
Low-Density Trees	51	0	0	0	0	0	0	0	0	0	0	0	0	0	0	0	0	0	51
Lowland Conifers	0	0	0	0	0	0	0	0	0	2	0	0	0	0	0	0	0	0	2
Lowland Deciduous	0	0	0	0	0	0	3	4	0	0	0	0	0	0	0	0	0	5	12
Lowland Shrub	2	0	0	0	0	0	0	0	0	0	0	0	0	0	0	0	0	0	2
Mixed Upland Deciduous	0	0	2	0	2	3	0	8	16	0	0	0	0	0	0	0	0	0	31
Northern Hardwood	0	0	12	13	2	0	28	142	756	128	40	0	8	0	0	0	0	206	1335
Planted Mixed Pines	0	0	0	0	0	0	0	0	0	30	0	0	0	0	0	0	0	0	30
Red Pine	0	0	0	0	0	0	197	16	19	0	0	0	0	0	0	0	0	0	232
Upland Mixed Forest	0	0	158	0	0	0	14	0	0	0	0	0	0	0	0	0	0	0	172
Urban	5	0	0	0	0	0	0	0	0	0	0	0	0	0	0	0	0	0	5
<b>Total</b>	<b>131</b>	<b>0</b>	<b>207</b>	<b>13</b>	<b>4</b>	<b>57</b>	<b>242</b>	<b>222</b>	<b>795</b>	<b>161</b>	<b>45</b>	<b>0</b>	<b>8</b>	<b>0</b>	<b>0</b>	<b>0</b>	<b>0</b>	<b>212</b>	<b>2097</b>



## Report 2 – Treatment Summary

Gaylord Mgt. Unit

Compartment 143

Year of Entry:

Acres of Harvest

Total Compartment Acres: 2,096

Commercial Harvest - 372  
 Harvests with Site Condition - 0  
 Next Step Harvest - 0  
 Habitat Cut - 0

### Cover Type by Harvest Method

	Clearcut	Selection	Patch Clearcut	Seed Tree	Shelterwood	Thinning	Overstory Removal	Salvage	Other	Total Acres
Aspen	32	0	0	0	0	0	0	0	0	32
Northern Hardwood	75	229	0	0	0	0	0	20	0	324
Red Pine	0	0	0	0	0	16	0	0	0	16
<b>Total</b>	<b>107</b>	<b>229</b>	<b>0</b>	<b>0</b>	<b>0</b>	<b>16</b>	<b>0</b>	<b>20</b>	<b>0</b>	<b>372</b>

### Proposed and Next Step Treatments by Method

	Harvest	Site Prep	Planting	Seeding	Burning	Pesticide	Monitoring	Other	Non-Forest Mgt.	Total Acres
Current	372	0	0	0	0	0	0	0	105	476
Next Step	0	48	209	0	0	71	539	115	0	982
<b>Total</b>	<b>372</b>	<b>48</b>	<b>209</b>	<b>0</b>	<b>0</b>	<b>71</b>	<b>539</b>	<b>115</b>	<b>105</b>	<b>1458</b>



Standa	Treatment Name	Acres	Stand CoverType	Size Density	Stand Age	BA Range	Treatment Type	Treatment Method	Cover Type Objective	Age Structure	Approval Status
7	52143007-Cut	37.2	4112 - Maple, Beech, Cherry Association	Sawtimber Well	85	111-140	Harvest	Single Tree Selection	411 - Northern Hardwood	Uneven-Aged	Draft Field Boundary

**Habitat Cut: No****Site Condition:**

Prescription Thin down to 80BA, creating 2-3 variable diameter (30-60') canopy gaps per acre. Do not cut hemlock and do not open up canopy too much around hemlock regeneration. Keep sale boundary at least one chain away from the Cedar Creek stream bank (and at least 100 feet away from the stream itself), using the two-track as a guide if applicable. Salvage beech, but retain 1-3 per acre exhibiting resistance and/or wildlife values.

Specs:

Next Step  
Treatments:

Acceptable Regen: Acceptable regeneration in created canopy gaps will include minimum stocking of mixed deciduous species, especially cherry, red maple, and sugar maple.

Other Comment: Old next step comments:

Proposed Start Date: 10/01/2016

9	52143009-Cut	18.0	4110 - Sugar Maple Association	Sawtimber Well	88	111-140	Harvest	Single Tree Selection	411 - Northern Hardwood	Uneven-Aged	Draft Field Boundary
---	--------------	------	--------------------------------	----------------	----	---------	---------	-----------------------	-------------------------	-------------	----------------------

**Habitat Cut: No****Site Condition:**

Prescription Thin down to 80 BA, creating 2-4 variable diameter (30-60') canopy gaps per acre. Do not cut any hemlock and do not open canopy up too much around hemlock in the understory to prevent scorching. Salvage beech, except leave 1-3 per acre exhibiting resistance and/or for wildlife purposes. Truck out of the opening to the south; do not cross the Cedar Creek drainage.

Specs:

Next Step  
Treatments:

Acceptable Regen: Acceptable regeneration in created canopy gaps will include minimum stocking of mixed deciduous species. >50% beech will be unacceptable and will require follow-up treatments.

Other Comment: Old next step comments:

Proposed Start Date: 10/01/2016

10	52143010-Cut	24.4	4110 - Sugar Maple Association	Sawtimber Well	73	111-140	Harvest	Single Tree Selection	411 - Northern Hardwood	Uneven-Aged	Draft Field Boundary
----	--------------	------	--------------------------------	----------------	----	---------	---------	-----------------------	-------------------------	-------------	----------------------

**Habitat Cut: No****Site Condition:**

Prescription Salvage all beech, except leave 1-3 per acre, as available, exhibiting resistance to BBD and as wildlife trees. Mark remaining stems down to 80 BA, creating 1-3 30-60' gaps per acre.

Specs:

Next Step Monitoring, Natural Regen (Re-Inventory); Pesticide, Skidder/Mechanical; Planting, Interplant  
Treatments:

Acceptable Regen: Acceptable regeneration in created canopy gaps will include minimum stocking of mixed deciduous species. >50% beech will be unacceptable and will require follow-up treatments.

Other Comment: Old next step comments:

Proposed Start Date: 10/01/2016

20	52143020-cut-oi	4.9	4112 - Maple, Beech, Cherry Association	Poletimber Well	53	81-110	Harvest	Clearcut	4116 - Mixed N. Hardwood - Aspen	Even-Aged	Draft Field Boundary
----	-----------------	-----	---	-----------------	----	--------	---------	----------	----------------------------------	-----------	----------------------

**Habitat Cut: No****Site Condition:**

Prescription Clearcut stand down to 2" dbh. Do not cut oak or any conifer. Leave no more than 3 beech per acre if any are found exhibiting resistance to BBD. No retention due to small stand size except for those species listed.

Specs:

Next Step  
Treatments:

Acceptable Regen: Acceptable regeneration will meet the minimum stocking levels for mixed hardwood. Expect and accept areas that come back to aspen, meeting minimum requirements for acceptable aspen stocking.

Other Comment: Old next step comments:

Proposed Start Date: 10/01/2016



S t a n d	Treatment Name	Acres	Stand CoverType	Size Density	Stand Age	BA Range	Treatment Type	Treatment Method	Cover Type Objective	Age Structure	Approval Status
21	52143021-Cut	8.6	4112 - Maple, Beech, Cherry Association	Poletimber Well	66	81-110	Harvest	Clearcut	4139 - Aspen, Mixed Deciduous	Even-Aged	Draft Field Boundary

**Habitat Cut: No****Site Condition:**

Prescription Clearcut to 2" dbh. Avoid harvesting areas dominated by hardwood and/or hemlock. Do not cut any oak, hemlock, or yellow birch if found within sale boundary. Use the pathway as an exterior boundary, not crossing it. Protect the integrity of the hiking/ski trail - do not cut any trees marked as trail markers. Retention should be placed around pockets dominated by hardwood, if found (except beech), and also along the pathway.

Specs:

Next Step  
Treatments:

Acceptable Regen: Acceptable regeneration will meet minimum stocking levels of aspen and mixed hardwood.

Other Comment: Administrating forester will designate a skid trail north to connect with the clearcut to the north. Old next step comments:

Proposed Start Date: 10/01/2016

23	52143023-Cut	70.0	4112 - Maple, Beech, Cherry Association	Sawtimber Well	69	111-140	Harvest	Single Tree Selection	411 - Northern Hardwood	Uneven-Aged	Draft Field Boundary
----	--------------	------	---	----------------	----	---------	---------	-----------------------	-------------------------	-------------	----------------------

**Habitat Cut: No****Site Condition:**

Prescription Salvage ash and beech, leaving 1-3 trees per acre for wildlife values. Thin residual stand to 80BA. Create 2-4 variable diameter (30-60') gaps per acre to begin regenerating parts of the stand. Do not cut hemlock, red oak, or elm. Do not open up canopy too much above hemlock in the subcanopy to prevent scorching - leave basal areas higher in these areas, acceptable basal areas of 100-120. Protect Wildwood Hills Pathway. Do not cut any trees marking the trail and leave some XL beech near the trail intersection. Harvest in snow-off conditions only to avoid conflicts with groomed ski trail.

Specs:

Next Step Monitoring, Natural Regen (Re-Inventory); Planting, Underplant  
Treatments:

Acceptable Regen: Acceptable regeneration will meet the minimum stocking levels for mixed hardwood within the canopy gaps. If gaps are dominated by >50% beech, follow-up treatment(s) must be considered.

Other Comment: Old next step comments:

Proposed Start Date: 10/01/2016

24	52143024-Cut	25.2	4139 - Aspen, Mixed Deciduous	Sawtimber Well	69	81-110	Harvest	Clearcut with Retention	4139 - Aspen, Mixed Deciduous	Even-Aged	Draft Field Boundary
----	--------------	------	-------------------------------	----------------	----	--------	---------	-------------------------	-------------------------------	-----------	----------------------

**Habitat Cut: No****Site Condition:**

Prescription Clearcut to 2" dbh. Do not cut hemlock, yellow birch, or oak. Central pocket of hardwood and drainage to the east are to be excluded from sale boundary as retention.

Specs: Protect witness trees and survey posts on private corner. Protect the integrity of Wildwood Hills Pathway - only crossing at designated locations and do not cut any trees marked with trail markers. Keep sale boundaries variable to add edge for wildlife value. Do not deck or stage equipment within the grassy opening in the southwest.

Next Step  
Treatments:

Acceptable Regen: Acceptable regeneration will meet the minimum standards for stocking of mixed aspen and hardwood.

Other Comment: Post trail during harvesting activity. Render two-track impassable if utilized for skidding or hauling. If found, consider leave-marking maple with excessive exfoliating or platy bark for bat habitat. Old next step comments:

Proposed Start Date: 10/01/2016



S t a n d	Treatment Name	Acres	Stand CoverType	Size Density	Stand Age	BA Range	Treatment Type	Treatment Method	Cover Type Objective	Age Structure	Approval Status
32	52143032-Cut	46.2	4110 - Sugar Maple Association	Poletimber Well	79	81-110	Harvest	Single Tree Selection	411 - Northern Hardwood	Uneven-Aged	Draft Field Boundary

**Habitat Cut: No**

**Site Condition:**

Prescription Remark boundaries. Salvage ash and beech, mark remaining stand to 80BA, creating 1-3 canopy gaps of 60-100' diameter if not created by salvage efforts. Protect hemlock and elm, if found. Sign and protect ski and ORV trails during harvesting and hauling operations as applicable. If trail(s) is/are crossed, resolve rutting at the close of every day. Access through NF opening off of Atchison Road, but protect potential historical sites and fruit trees. Recommended harvesting in snow-off conditions to avoid conflict with groomed ski trail.

Next Step Monitoring, Natural Regen (Re-Inventory); Other, Other; Monitoring, Natural Regen (Intermediate)

Acceptable Regen: Acceptable regen in created canopy gaps will meet minimum stocking requirements for mixed northern hardwood and will not be greater than 50% beech. If beech occupies >50% of any canopy gap, follow up treatments will be necessary.

Other Comment: Old next step comments:

Proposed Start Date: 10/01/2016

33	52143033-Cut	20.4	4119 - Mixed Northern Hardwoods	Poletimber Well	84	81-110	Harvest	Salvage	411 - Northern Hardwood	Uneven-Aged	Draft Field Boundary
----	--------------	------	---------------------------------	-----------------	----	--------	---------	---------	-------------------------	-------------	----------------------

**Habitat Cut: No**

**Site Condition:**

Prescription Remark boundaries, excluding southern acreage. Salvage beech. Mark lesser quality/multi-stemmed trees to create openings in the canopy and provide skid trails. Protect hemlock and elm, if found. Sign and protect ski and ORV trails during harvesting and hauling operations as applicable. If trail(s) is/are crossed, resolve rutting at the close of every day. Recommended harvesting in snow-off conditions to avoid conflict with groomed ski trail.

Next Step Monitoring, Natural Regen (Intermediate); Other, Other; Monitoring, Natural Regen (Intermediate); Planting, Interplant; Monitoring, Natural Regen (Intermediate)

Acceptable Regen: Acceptable regeneration will be determined by minimum stocking of any combination of mixed hardwood species <50% beech. If greater than 50% beech regeneration within these gaps, roller-chop, herbicide, repeat, and replant at necessary to native and/or resistant stock. Plant with native and/or resistant mast species.

Other Comment: Old next step comments:

Proposed Start Date: 10/01/2016

38	52143038-NF	0.4	3102 - Grass	Nonstocked	Unspecified	NonForestMgt	Other - Specify		310 - Herbaceous Openland		Draft Field Boundary
----	-------------	-----	--------------	------------	-------------	--------------	-----------------	--	---------------------------	--	----------------------

**Habitat Cut: No**

**Site Condition:**

Prescription Plant to food and cover crops for wildlife or maintain grasses using mechanical methods or fire as funding allows.

Next Step Treatments:

Acceptable Regen:

Other Comment: Old next step comments:

Proposed Start Date: 05/01/2015

40	52143040-NF	1.8	4191 - Mixed Upland Deciduous with Conifer	Poletimber Poor	36	1-50	NonForestMgt	Other - Specify	3205 - Mixed Upland Shrub		Draft Field Boundary
----	-------------	-----	--	-----------------	----	------	--------------	-----------------	---------------------------	--	----------------------

**Habitat Cut: No**

**Site Condition:**

Prescription Brush, mow, plant, burn and/or herbicide to maintain opening. Planting of hard and soft mast.

Next Step Treatments:

Acceptable Regen:

Other Comment: Old next step comments:

Proposed Start Date: 10/01/2016



S t a n d	Treatment Name	Acres	Stand CoverType	Size Density	Stand Age	BA Range	Treatment Type	Treatment Method	Cover Type Objective	Age Structure	Approval Status
42	52143042-Cut	8.7	4111 - S.Maple, Hard Mast Association	Sawtimber Well	71	81-110	Harvest	Clearcut	411 - Northern Hardwood	Even-Aged	Draft Field Boundary

**Habitat Cut: No****Site Condition:**

Prescription Clearcut all trees greater than 2" dbh. Keep dirtbike/ORV trail intact, using it as a boundary line along the north and northeast edge. Do not cut any trees with trail markers. Mark to leave 1-3 trees per acre to add wildlife value. Emphasize marking sugar maple with exfoliating/platey bark for bat habitat, retention of any BBD resistant beech, and/or ash not showing signs of EAB. Run the south private line - the road meanders and does not align well with the actual private boundary.

Next Step Monitoring, Natural Regen (Re-Inventory); Pesticide, Skidder/Mechanical; Planting, Interplant

Acceptable Regen: Acceptable regeneration will satisfy the minimum stocking requirements for mixed northern hardwood. If regeneration includes greater than 50% beech, follow-up treatments must be considered.

Other Comment: Old next step comments:

Proposed Start Date: 10/01/2016

42	52143042-Cutx	33.1	4111 - S.Maple, Hard Mast Association	Sawtimber Well	71	81-110	Harvest	Single Tree Selection	411 - Northern Hardwood	Two-Aged	Draft Field Boundary
----	---------------	------	---------------------------------------	----------------	----	--------	---------	-----------------------	-------------------------	----------	----------------------

**Habitat Cut: No****Site Condition:**

Prescription Salvage all marketable ash and beech and mark remaining stand down to 80 BA, creating 2-3 canopy gaps per acre of variable diameters, 30-60'. Retain 1-3 ash and/or beech per acre as wildlife trees, especially any displaying resistance to EAB or BBD, respectively. Protect ORV/dirtbike and snowmobile trails. Do not cut any trees with trail markers. Cross trail in only one designated location. Use the snowmobile trail as the north boundary. Cut outside of snowmobile season to avoid conflicts with the groomed trail.

Next Step Monitoring, Natural Regen (Re-Inventory); Pesticide, Skidder/Mechanical; Planting, Interplant

Acceptable Regen: Acceptable regeneration within canopy gaps will satisfy the minimum stocking level for mixed hardwoods. If beech occupies greater than 50% of any gap, follow-up treatments must be considered to establish desirable regeneration.

Other Comment: Old next step comments:

Proposed Start Date: 10/01/2016

42	52143042-Cutxx	48.1	4111 - S.Maple, Hard Mast Association	Sawtimber Well	71	81-110	Harvest	Clearcut with Retention	411 - Northern Hardwood	Even-Aged	Draft Field Boundary
----	----------------	------	---------------------------------------	----------------	----	--------	---------	-------------------------	-------------------------	-----------	----------------------

**Habitat Cut: No****Site Condition:**

Prescription Clearcut stand to 2" dbh, capturing beech and lesser quality red maple. Require 6" stump height to facilitate potential future mechanical/chemical needs. Do not cut any underrepresented species, including hemlock or elm and mark leave trees around hemlock if found. Sign and protect ORV trail and snowmobile trails during harvesting and hauling operations, crossing in only one designated location as instructed by administering forester. Snowmobile trail may not be used or crossed in any way during the snowmobile season.

Next Step Monitoring, Natural Regen (Intermediate); Other, Other; Monitoring, Natural Regen (Intermediate); SitePrep, Roller Chopping; Planting, Initial Plant

Acceptable Regen: Acceptable regeneration will meet minimum stocking requirements for mixed northern hardwood with less than 50% beech regeneration.

Other Comment: Old next step comments:

Proposed Start Date: 10/01/2016



S t a n d	Treatment Name	Acres	Stand CoverType	Size Density	Stand Age	BA Range	Treatment Type	Treatment Method	Cover Type Objective	Age Structure	Approval Status
51	52143051-NF	0.9	3102 - Grass	Nonstocked		Unspec ified	NonForestMgt	Other - Specify	310 - Herbaceous Openland		Draft Field Boundary

**Habitat Cut: No****Site Condition:**

Prescription Brush, mow, plant, burn and/or herbicide to maintain opening. Planting of hard and soft mast.

Specs:

Next Step

Treatments:

Acceptable

Regen:

Other Old next step comments:

Comment:

Proposed Start Date: 10/01/2016

57	52143057-NF	2.0	3303 - Mixed Low Density Trees	Nonstocked	0	Unspec ified	NonForestMgt	Other - Specify	320 - Upland Shrub		Draft Field Boundary
----	-------------	-----	-----------------------------------	------------	---	-----------------	--------------	-----------------	-----------------------	--	-------------------------

**Habitat Cut: No****Site Condition:**

Prescription Brush, mow, plant, burn and/or herbicide to maintain opening. Planting of hard and soft mast.

Specs:

Next Step

Treatments:

Acceptable

Regen:

Other Old next step comments:

Comment:

Proposed Start Date: 10/01/2016

71	52143071-Cut	3.7	4130 - Aspen	Sawtimber Well	73	111- 140	Harvest	Clearcut	4139 - Aspen, Mixed Deciduous	Even-Aged	Draft Field Boundary
----	--------------	-----	--------------	-------------------	----	-------------	---------	----------	-------------------------------------	-----------	-------------------------

**Habitat Cut: No****Site Condition:**

Prescription Clearcut stand to 2" dbh. If found, do not cut any oak. Wildwood Road MUST be posted during all harvesting and hauling activity. No retention

Specs: due to small stand size.

Next Step

Treatments:

Acceptable Acceptable regeneration will meet the minimum stocking levels for aspen and mixed deciduous species.

Regen:

Other Old next step comments:

Comment:

Proposed Start Date: 10/01/2016

76	52143076-Cut	15.7	42110 - Planted Red Pine	Sawtimber Well	59	171- 200	Harvest	Crown Thinning	42110 - Planted Red Pine	Even-Aged	Draft Field Boundary
----	--------------	------	-----------------------------	-------------------	----	-------------	---------	----------------	-----------------------------	-----------	-------------------------

**Habitat Cut: No****Site Condition:**

Prescription Marked thinning down to 120 BA, accepting slightly lower basal areas in areas with pre-existing lower stocking.

Specs:

Next Step

Treatments:

Acceptable

Regen:

Other Old next step comments:

Comment:

Proposed Start Date: 10/01/2016





Stand Name	Treatment Name	Acres	Stand CoverType	Size Density	Stand Age	BA Range	Treatment Type	Treatment Method	Cover Type Objective	Age Structure	Approval Status
79	52143079-Cut	2.8	4130 - Aspen	Sawtimber Well	94	111-140	Harvest	Clearcut	413 - Aspen	Even-Aged	Draft Field Boundary

**Habitat Cut: No**

**Site Condition:**

Prescription Clearcut all trees greater than 2" dbh. Retain wolfy, overmature sugar maple next to road. Keep dirtbike/ORV trail intact, using it as the north boundary. Retention will be the acreage north of the trail, otherwise no in-stand retention due to small stand size. Do not cut any trail markers or trees marked to designate the trail. Run south private line - the road meanders and does not align with the actual private boundary.

Next Step  
Treatments:

Acceptable Regen: Acceptable regeneration will satisfy the minimum stocking requirements for aspen.

Other Comment: Old next step comments:

Proposed Start Date: 10/01/2016

80	52143080-Cut	4.7	4119 - Mixed Northern Hardwoods	Poletimber Well	78	81-110	Harvest	Clearcut	4116 - Mixed N. Hardwood - Aspen	Even-Aged	Draft Field Boundary
----	--------------	-----	---------------------------------	-----------------	----	--------	---------	----------	----------------------------------	-----------	----------------------

**Habitat Cut: No**

**Site Condition:**

Prescription Clearcut all trees greater than 2" dbh. Keep dirtbike trail/ORV trail intact; use it as a western boundary where applicable; only cross in one designated spot. Do not cut any trail markers. Mark to leave no more than 3 beech per acre if any display BBD resistance, also mark to leave no more than 2 sugar maple per acre if any display especially "platey" bark for bat habitat. Otherwise no retention due to small stand size.

Next Step Monitoring, Natural Regen (Re-Inventory); Pesticide, Skidder/Mechanical; Planting, Interplant  
Treatments:

Acceptable Regen: Acceptable regeneration will meet the minimum stocking level for mixed hardwood and aspen. If more than 50% regenerates to beech, alternative treatments must be considered.

Other Comment: Old next step comments:

Proposed Start Date: 10/01/2016

405	52143405-NF	3.2	330 - Low-Density Trees	Nonstocked		Unspecified	NonForestMgt	Other - Specify	320 - Upland Shrub		Draft Field Boundary
-----	-------------	-----	-------------------------	------------	--	-------------	--------------	-----------------	--------------------	--	----------------------

**Habitat Cut: No**

**Site Condition:**

Prescription Brush, mow, plant, burn and/or herbicide to maintain opening. Planting of hard and soft mast.  
Specs:

Next Step  
Treatments:

Acceptable Regen:

Other Comment: Old next step comments:

Proposed Start Date: 10/01/2016

409	52143409-NF	1.8	4199 - Other Mixed Upland Deciduous	Poletimber Poor	17	Immature	NonForestMgt	Other - Specify	320 - Upland Shrub		Draft Field Boundary
-----	-------------	-----	-------------------------------------	-----------------	----	----------	--------------	-----------------	--------------------	--	----------------------

**Habitat Cut: No**

**Site Condition:**

Prescription Brush, mow, plant, burn and/or herbicide to maintain opening. Planting of hard and soft mast.  
Specs:

Next Step  
Treatments:

Acceptable Regen:

Other Comment: Old next step comments:

Proposed Start Date: 10/01/2016



S t a n d	Treatment Name	Acres	Stand CoverType	Size Density	Stand Age	BA Range	Treatment Type	Treatment Method	Cover Type Objective	Age Structure	Approval Status
410	52143410-NF	2.0	4110 - Sugar Maple Association	Sapling Poor	16	Immature	NonForestMgt	Other - Specify	320 - Upland Shrub		Draft Field Boundary

**Habitat Cut: No****Site Condition:**

Prescription Brush, mow, plant, burn and/or herbicide to maintain opening. Planting of hard and soft mast.

Specs:

Next Step

Treatments:

Acceptable

Regen:

Other Old next step comments:

Comment:

Proposed Start Date: 10/01/2016

412	52143412-NF	1.2	330 - Low-Density Trees	Nonstocked		Unspecified	NonForestMgt	Other - Specify	320 - Upland Shrub		Draft Field Boundary
-----	-------------	-----	-------------------------	------------	--	-------------	--------------	-----------------	--------------------	--	----------------------

**Habitat Cut: No****Site Condition:**

Prescription Brush, mow, plant, burn and/or herbicide to maintain opening. Planting of hard and soft mast.

Specs:

Next Step

Treatments:

Acceptable

Regen:

Other Old next step comments:

Comment:

Proposed Start Date: 10/01/2016

413	52143413-NF	1.5	31029 - Grass (OI)	Nonstocked		Unspecified	NonForestMgt	Other - Specify	310 - Herbaceous Openland		Draft Field Boundary
-----	-------------	-----	--------------------	------------	--	-------------	--------------	-----------------	---------------------------	--	----------------------

**Habitat Cut: No****Site Condition:**

Prescription Brush, mow, plant, burn and/or herbicide to maintain opening. Planting of hard and soft mast.

Specs:

Next Step

Treatments:

Acceptable

Regen:

Other Old next step comments:

Comment:

Proposed Start Date: 10/01/2016

415	52143415-NF	53.2	3102 - Grass	Nonstocked		Unspecified	NonForestMgt	Other - Specify	310 - Herbaceous Openland		Draft Field Boundary
-----	-------------	------	--------------	------------	--	-------------	--------------	-----------------	---------------------------	--	----------------------

**Habitat Cut: No****Site Condition:**

Prescription Prune apple trees. Remove autumn olive as funding and time allow. Brush, mow, plant, burn and/or herbicide to maintain opening. Planting of hard and soft mast.

Specs:

Next Step

Treatments:

Acceptable

Regen:

Other Archaeological concerns Old next step comments:

Comment:

Proposed Start Date: 05/01/2015



S t a n d	Treatment Name	Acres	Stand CoverType	Size Density	Stand Age	BA Range	Treatment Type	Treatment Method	Cover Type Objective	Age Structure	Approval Status
419	52143419-NF	35.3	330 - Low-Density Trees	Nonstocked	0	Unspec ified	NonForestMgt	Other - Specify	3205 - Mixed Upland Shrub		Draft Field Boundary

**Habitat Cut: No****Site Condition:**

Prescription Brush, mow, plant, burn and/or herbicide to maintain opening. Planting of hard and soft mast.

Specs:

Next Step

Treatments:

Acceptable

Regen:

Other Old next step comments:

Comment:

Proposed Start Date: 10/01/2016

420	52143420-NF	1.7	3102 - Grass	Nonstocked		Unspec ified	NonForestMgt	Other - Specify	310 - Herbaceous Openland		Draft Field Boundary
-----	-------------	-----	--------------	------------	--	-----------------	--------------	-----------------	---------------------------------	--	-------------------------

**Habitat Cut: No****Site Condition:**

Prescription Brush, mow, plant, burn and/or herbicide to maintain opening. Planting of hard and soft mast.

Specs:

Next Step

Treatments:

Acceptable

Regen:

Other Old next step comments:

Comment:

Proposed Start Date: 10/01/2016

**Total Treatment  
Acreage Proposed: 476.4**

## Report 5 – Site Conditions

Gaylord Mgt. Unit  
Tricia St. Pierre : Examiner

Compartment: 143  
Year of Entry: 2017

### Availability for Management

Total Acres	Acres Available	Acres Avail		Acres Not Available		Dominant Site Conditions						
		With Condition				5B	5C	2F	2G	3D	3J	
152	128	22		2	Aspen	20	2	2				
7	7	0		0	Bare/Sparsely Vegetated							
66	66	0		0	Herbaceous Openland	0						
51	51	0		0	Low-Density Trees							
2	0	0		2	Lowland Conifers							2
12	0	0		12	Lowland Deciduous				7			5
2	2	0		0	Lowland Shrub							
31	31	0		0	Mixed Upland Deciduous							
1335	1282	45		8	Northern Hardwood		45			5		2
30	0	0		30	Planted Mixed Pines					30		
231	231	0		0	Red Pine							
172	172	0		0	Upland Mixed Forest							
5	5	0		0	Urban							
2,096	1,974	67		54	Total Forested Acres	20	47	2	7	36		10
	94%	3%		3%	Relative Percent							

*\*Due to limitations in the current Site Conditions Analysis tool, all nonforested acres are considered available. Future development will enable analysis of nonforested types.*

Site No.	Dominant Site Cond Availability	Dominant Site Condition	Acres	Other Site Condition	Other Site Condition	Other Site Condition	Other Site Condition
1	Unavailable	2F: Too steep	2	Unspecified	Unspecified	Unspecified	Unspecified
<b>Comments:</b>							
2	Unavailable	3D: Recreational / Scenic values	30	Unspecified	Unspecified	Unspecified	Unspecified
<b>Comments:</b>							

## Report 5 – Site Conditions

Gaylord Mgt. Unit

Compartment: 143

Tricia St. Pierre : Examiner

Year of Entry: 2017

3	<b>Available</b>	<b>5B: Maintain for regeneration purposes</b>	20	Unspecified	Unspecified	Unspecified	Unspecified
<b>Comments:</b> This portion of the stand has not been prescribed in order to preserve a better quality hardwood component that might later be marked for thinning, also to protect a low area with sensitive soils.							
4	<b>Unavailable</b>	<b>3D: Recreational / Scenic values</b>	5	3A: Potential old growth / biodiversity	Unspecified	Unspecified	Unspecified
<b>Comments:</b> Major junction for Wildwood Hills Pathway and a unique pocket of XL timber and hemlock.							
5	<b>Available</b>	<b>5C: Delay treatment for age/size class diversity or exceptional site quality</b>	24	Unspecified	Unspecified	Unspecified	Unspecified
<b>Comments:</b> Keeping the treatment inside of the recreational trail will prevent damage to the trail, promote user safety, and foster better relationships with the public.							
6	<b>Available</b>	<b>5C: Delay treatment for age/size class diversity or exceptional site quality</b>	21	Unspecified	Unspecified	Unspecified	Unspecified
<b>Comments:</b> Delay treatment on this stand. The high density of low quality beech and pole timber do not make it managerially desirable. Delay treatment until next cycle, and which time the beech regenerations should be addressed in this stand and the UM9 stand to the east. Consider replanting both to red pine!							
7	<b>Unavailable</b>	<b>3J: Water quality / BMPs (stream, river, or lake)</b>	10	3K: Rare or unique landforms	5A: Not able to obtain desirable regeneration	Unspecified	Unspecified
<b>Comments:</b>							
8	<b>Unavailable</b>	<b>2G: Too wet (sensitive soils, does not include access issues)</b>	3	Unspecified	Unspecified	Unspecified	Unspecified
<b>Comments:</b>							

**Report 5 – Site Conditions**

**Gaylord Mgt. Unit**  
**Tricia St. Pierre : Examiner**

**Compartment: 143**  
**Year of Entry: 2017**

9	<b>Available</b>	<b>5C: Delay treatment for age/size class diversity or exceptional site quality</b>	2	Unspecified	Unspecified	Unspecified	Unspecified
<b>Comments:</b>							
10	<b>Unavailable</b>	<b>2G: Too wet (sensitive soils, does not include access issues)</b>	4	Unspecified	Unspecified	Unspecified	Unspecified
<b>Comments:</b>							

Mgt. Unit

Compartment: #Type!

Year of Entry:



## Report 6 – PROPOSED SPECIAL CONSERVATION AREA\* (SCA) DETAILS

\* This is a partial list of SCAs for this compartment. Not included are those areas identified under other Department initiatives (Natural Rivers, Deer Wintering Areas, etc.). Those will be identified in separate, future map and report products.

SCA Name	SCA Category	Detail Type	Recommendation	Acres
----------	--------------	-------------	----------------	-------

---

Comments

---

**Report 7 – EXISTING SPECIAL CONSERVATION AREA DETAILS**

\* This is a list of SCA's for this compartment along with a 1/4 mile buffer surrounding the compartment. Refer to the Special Conservation Area Map for locations of the below listed Conservation Areas.

<b>Conservation Area</b>	<b>Type</b>	<b>Description</b>
SCA	Cold Water Stream	A coldwater stream has temperature and dissolved oxygen conditions that allow naturally-reproduced or stocked trout populations and those of other coldwater fish species (e.g., slimy sculpin) to persist from year to year. Coldwater streams in Michigan typically provide these conditions due to substantial contributions of groundwater to their stream flows. Such streams are established by Director's action and designated as trout resources by Fisheries Order 210.

ERA = Ecological Reference Area  
HCVA = High Conservation Value Area  
SCA = Special Conservation Area





Stand	Level 4 Cover Type	Size Density	Acres	Stand Age	BA Range	General Comments:
1	42110 - Planted Red Pine	Poletimber Well	4.7	65	81-110	Heavy browsing on the sugar maple subcanopy. 20% crowns; kind of limby. Basal area is 90-120, hovering around 110. Manageable understory. One red oak, pole, in canopy. Sugar maple is in north portion of stand. Thinned in 2010. Wildwood Red Pine, 52-107-07. OPIC - FMD: Stunted - 4 stick RP, understory clean, a little beech here and there. Planted 1951. Thinned in 2009.
2	42110 - Planted Red Pine	Sawtimber Well	13.6	59	111-140	15-20% crowns. Dense hardwood regeneration in canopy gaps; prolific sugar maple in gap on hill and western fingers. Beech is consistently regenerating throughout - sugar maple too, but much higher densities in west. White ash, black cherry, ironwood, and quaking aspen found on edges. Steep slope in the south-western finger. Couple cherry in overstory, <1%, pole, 6-8" dbh. Basal area ranges from 100-150. Mean: 115, median: 110, mode: 100. OPIC - FMD: Thinned in 1987. Thinned in Winter 2008/2009.
3	4319 - Mixed Upland Forest	Sapling Medium	157.9	16	Immature	Red pine cut in 1998. Herbicide application in August/September 1999 to remove aspen and mullein; partially trenched in November 1999, neglecting seven acres; red pine hand planted in 2000; remaining seven acres trenched and planted May 2002 at approximately 1000 tpa. Some mortality in the red pine. Heavy browsing on sugar maple and white ash. Brooming on the beech. 1 witchhazel along MCCCT. Swath of high density pole-sap beech, cherry, oak, sugar maple, aspen along trail. More aspen in south third of stand. Jack pine scattered, especially to the east of Reams Road and a few stems in the south.
4	4110 - Sugar Maple Association	Sawtimber Well	34.9	85	81-110	No saplings in canopy - I wasn't able to select a size class without the sapling designation. Beech bark disease present, not prolific. Not a lot of beech on hills in south or west. Hilly stand with multiple morainal ridges. Higher densities in northeast. Located one elm, trace amounts of black cherry, and a few ironwood pole/log that reach the canopy <1%. Not a lot of regeneration <10' except some ironwood and pockets of beech. Sapling sugar maple suppressed, could be released. OPIC - FMD: Thick regen of SM and Beech, very hilly. Selection cut in 1987.
5	6117 - Lowland Deciduous, Mixed Coniferous	Sawtimber Well	4.9	83	81-110	Scouring begins halfway through the stand to form channel to the north. Highly variable stand with sensitive soils. Hemlock subcanopy of sapling/pole mix. Couple beech, <1%, in the overstory. OPIC - FMD: Lots of Hemlock in understory, heavy deer browse in regen.
6	4115 - Y.Birch, Hemlock NH	Sawtimber Well	2.3	99	81-110	Uniquely carved stream bank with good structural diversity/stratification. Most of the hemlock (log and pole) is subcanopy, Stream flows north with more pronounced banks in the north. Ground levels out a bit in the south.
7	4112 - Maple, Beech, Cherry Association	Sawtimber Well	39.1	85	111-140	Acreage south of Booty Road is less dense, more open canopy, slightly larger diameters. Better quality hardwood in the west half the of stand ocerall. More black cherry in east. Unique "gorge" dividing stand, protecting Cedar Creek. Very small, 1/10th ac, opening in the northern extreme of the east half. OPIC - FMD: Nice SM understory coming in, 3-4in class. Selection cut in 1987.



Stand	Level 4 Cover Type	Size Density	Acres	Stand Age	BA Range	General Comments:
8	4110 - Sugar Maple Association	Sawtimber Well	8.0	114	51-80	Log, pole, and sapling sized hemlock in the understory, just about reaching the canopy. Black cherry on the northern edge. Nice, clean sugar maple.
9	4110 - Sugar Maple Association	Sawtimber Well	18.0	88	111-140	Significant pole timber in stand that could be released. Steep slope alongside Reams Road, but stand is accessible from non-forest opening in the southeast. More beech in northeast by private, but overall a negligible amount. Pockets dominated by pole timber (especially southwest and north central). Easy, flat ground except for the northeast; it gets a little hilly near private (but operable). OPIC - FMD: Nice SM understory coming in, 3-4in class. Selection cut in 1987.
10	4110 - Sugar Maple Association	Sawtimber Well	24.4	73	111-140	Good quality hardwood, especially sugar maple and yellow birch. Trace amounts of red maple, beech, and black cherry (<1%) in the canopy. Consider canopy gaps, but do not cut yellow birch or hemlock. Do not put gaps in areas with beech or beech regeneration - unless stumps are treated post harvest. Possible gate on State land to PVT (west). OPIC - FMD: Open, nice SM understory. Selection cut in 1987.
11	6117 - Lowland Deciduous, Mixed Coniferous	Sawtimber Well	4.1	69	1-50	Deteriorating aspen. Pole red maple and balsam fir in the subcanopy as well. Eastern 1/4 of stand opens up a little bit. Heavily used by wildlife - lots of tracks, scat.
13	4130 - Aspen	Sapling Well	6.7	19	Immature	1 hemlock in center of stand. Patchy balsam fir of varying size classes. Alder inclusion on north edge transitioning into adjacent lowland stand. Red pine on south and east edge seeding in from plantation to the south. OPIC - FMD: A3 with some spruce-fir mixed in. Cut in '97. Aspen 1/2 - 1" dia. 6-12 ft tall. Also some M1 mixed in.
14	42110 - Planted Red Pine	Sawtimber Well	11.1	59	111-140	Most red pine seedlings are volunteers, <5'. Couple white oak saplings <5' on NE edge of stand. Browsing on white ash and sugar maple. Especially dense hardwood regeneration in pockets. Trace amounts of mullein. 15% crowns on the pine. Worrisome gap in the south-central portion of stand; ring of mortality. Thinned in 2010(?). Gularski RP, 52-109-07. OPIC - FMD: 3rd row thinned in '97. Thinned in winter 2008/2009.
15	4130 - Aspen	Sapling Well	7.4	19	Immature	Browsing on white ash and sugar maple in the subcanopy. Black knot present in the cherry. Clump of red oak, log/pole, south central, not harvested with the treatment in 1997. A little bit of blueberry under the oak. The northwest opens up a little bit with a mix of quaking aspen, red oak, sugar maple, red pine saplings. Private fence line along south boundary with an opening in the fence at the west corner. A trail leads north through this stand then cuts west to bypass the plantation and goes into the adjacent private property. Appears to be used by ORVs. OPIC - FMD: A3 with some M1, cut in '97. 1/2 - 1" dia., 6-12ft tall. Stand sits on a hill.



	Level 4 Cover Type	Size Density	Acres	Stand Age	BA Range	General Comments:
16	4111 - S.Maple, Hard Mast Association	Sawtimber Well	26.2	77	81-110	No XL red maple, white ash, or basswood in stand, but MiFi wouldn't accept "L/P". EAB and BBD present. Good quality sugar maple, lesser quality red maple and beech. Red pine supercanopy present in west 1/4 of the southern half of stand. One white pine, XL. East half of the southern half is dominated by log and XL beech, white ash, sugar maple, and basswood. Good quality, but BBD is affecting beech. North half is very hilly; undulating. No access east of ridge line (arcing), difficult to operate on remaining terrain. Old orange paint found on a couple trees. BAs largely in the 80-110 range with a few outliers on either side.
17	4119 - Mixed Northern Hardwoods	Poletimber Well	3.7	60	51-80	Private fence along south edge of stand. Survey corners intact. Concentration of aspen in far west corner, left out of adjacent clearcut; converting to hardwood. A few exposed rocks. One paper birch. Pileated Woodpecker active in stand during inventory.
18	42110 - Planted Red Pine	Sawtimber Well	11.1	65	111-140	Mullein also present in trace amounts. 15% crowns; boles somewhat limby, but decent quality red pine. Thinned in 2010. Wildwood Red Pine, 52-107-07. OPIC - FMD: Smaller dia. R.Pine plantation. Planted 1951. Third row thinned in 1987. Thinned in 2009.
19	4130 - Aspen	Sapling Well	14.9	17	Immature	Cut in 1999. Heavy browsing on understory sugar maple. Few open pockets of aspen closer to pole sized (3-5"). Seldom red pine and white pine - only in west half along southwest slope. Few bird nests. Heavier hardwood mix in n-s strip through center of stand.
20	4112 - Maple, Beech, Cherry Association	Poletimber Well	5.1	53	81-110	Beech bark disease present. Multi-stemmed, poor quality red maple and beech. Two pockets of good quality aspen (southwest and northeast). Red oak take very well to this site - straight, single stems, great quality. 1 paper birch, 1 yellow birch.
21	4112 - Maple, Beech, Cherry Association	Poletimber Well	28.7	66	81-110	Good quality sugar maple; poor, multi-stemmed red maple and beech. EAB and BBD present. One red oak of great form. This is a hardwood stand with pockets of aspen clones. One area in the south central with larger diameters and higher density. Over all basal area ranges from 70-100, average is 84.
22	42110 - Planted Red Pine	Sawtimber Well	7.4	59	111-140	Heavy browsing on the sugar maple regeneration. Trace amounts of mullein. Insignificant inclusion of log/pole beech, sugar maple, cherry in the canopy. Thinned in 2010. Wildwood Red Pine, 52-107-07. OPIC - FMD: Third row thinned in 1987. Thinned in 2009.
23	4112 - Maple, Beech, Cherry Association	Sawtimber Well	99.8	69	111-140	Trace amounts of yellow birch and hemlock in the canopy, some pole and log oak too (that could not be represented in MiFi). EAB and BBD present. Prolific beech understory with minimal regeneration of anything else except a few pockets of hemlock sap/pole/log. Most sugar maple regen is >20'. Few pockets of pole/sapling dominated overstory - boundary gets a little messy adjacent to stand 24 in the southeast. Clumpy mature aspen clones throughout stand, mostly along perimeter.



Stand	Level 4 Cover Type	Size Density	Acres	Stand Age	BA Range	General Comments:
24	4139 - Aspen, Mixed Deciduous	Sawtimber Well	48.9	69	81-110	No sapling ash or aspen in the canopy - MiFi wouldn't accept P/L with the diameter. This stand is a mix of good quality hardwood with decent quality aspen. Hardwood on southeast-facing slope, converting to bigtooth aspen on top of the hill in the northwest. Trace amounts of hemlock, yellow birch, and oak in stand. EAB present. Bit of quaking aspen in south tip.
25	42140 - Planted Mixed Pine	Sawtimber Well	30.4	89	51-80	White pine is present in XL/L/P in the canopy, but could not be represented as such in MiFi. There are pockets, especially to the east of Wildwood Ski Trail, that are dominated by Log red pine instead of XL. Jack pine was consistent throughout this stand at one time but has mostly died out leaving behind standing snags and fallen logs. Multi-stemmed/forked white pine. Few red maple and sugar maple in the canopy, also a couple black cherry (pole) and paper birch (pole). Canopy gaps are being dominated mostly by sugar maple saplings, >15', also some oak (pole), beech (sap), and red maple (sap) in lesser quantities. Bands of hemlock along the western tip, also a line of yellow birch (south side of the west tip). Extreme southeast corner is less dense and smaller diameter with jp (pl), bc (sp), wp, rp, ab, rm, sm, ro (all sap except oak, mostly pole). As for regeneration, sugar maple and beech are consistent throughout but occur frequently in dense pockets dominated by one or the other. Pole timber present of the following species: beech, jack pine (especially in gaps), ironwood, red oak, and black cherry. White pine is also consistent in lesser quantities throughout the stand, but there are a few pockets of dense white pine saplings, <5'. Beech Scale/BBD present on some beech.
26	4112 - Maple, Beech, Cherry Association	Sawtimber Well	11.1	86	51-80	Hemlock in the subcanopy are sapling and pole sized. Dense pocket of striped maple on south on hill merging into the adjacent stand. OPIC - FMD: Selection cut in 1987.
27	4112 - Maple, Beech, Cherry Association	Sawtimber Well	40.3	92	81-110	BBD. Trace amounts of elm, white ash, yellow birch, white pine in canopy. Red maple replaced by basswood as you go north and west, but red maple remains present throughout stand. Lower density in the north and west. One beech monoculture of concern in the northwest also. Protect under-represented species (elm, hemlock, yellow birch, white pine) in any harvesting activity. Basal areas range from 70-150, settling primarily between 90-130, averaging 105. OPIC - FMD: Part of this stand appears to have been thinned on the east side. Some hemlock and yellow birch scattered thruout. Selection cut in 1987. Selection cut in 1987.
28	42110 - Planted Red Pine	Sawtimber Well	18.5	76	81-110	Gap in northwest with cherry, oak, and beech. 80' red pine, 15-20% crowns. Seldom pole timber. Few declining maple in the south central portion of the stand. 1 yellow birch, 6" dbh. About ready to go. BAs range from 70-140. OPIC - FMD: Ski trail and orv trail runs thru. Thinned in 1987.



	Level 4 Cover Type	Size Density	Acres	Stand Age	BA Range	General Comments:
29	42110 - Planted Red Pine	Sawtimber Well	18.6	59	111-140	Clumpy, dense hardwood regeneration in west-northwest. Raspberry along trail. Slightly less regen east of powerline. Higher density balsam fir in southeast. One white spruce <5' in east. Heavy brose on sugar maple and hemlock (3 hemlock found clumped together in the west half); black knot on cherry. Knapweed on stand and utility edges. 75' red pine, third row thinned. Give 10 more years to grow before thinning. Good quality red pine but not supreme. Thinned in 2010. Wildwood Red Pine, 52-107-07. OPIC - FMD: Power line runs thru N-S. Third row thinned in 1987. Thinned in 2009
30	42110 - Planted Red Pine	Sawtimber Well	13.0	59	111-140	One concentrated pocket of white pine regen. Red pine regen is along the edges of the stand. Sugar maple saplings are very heavily browsed. Thinned in 2010. Wildwood Red Pine, 52-107-07. OPIC - FMD: Ski trail runs thru. Thinned in 2009.
31	4139 - Aspen, Mixed Deciduous	Poletimber Poor	0.6	21	Immature	Dead staghorn sumac on hill. Old non-forest opening being colonized by aspen, cherry, mixed hardwood/conifer.
32	4110 - Sugar Maple Association	Poletimber Well	330.9	79	81-110	No sapling elm, but MiFi wouldn't accept P/L with 6" ave dbh. This is a large, variable hardwood stand with very few pockets of aspen (mostly on the edges). It's hilly in spots, but the vast majority of the stand is operable. Beech Bark Disease is present, and in combination with the prolific beech regeneration (lower in some spots, but generally medium to high throughout), the future of this stand needs to be carefully considered. There are good quality hardwood stems throughout, but desired regeneration is not in place. OPIC - FMD: Ski trail runs thru, some hemlock scattered thru stand, some aspen towards south. Parts of stand were selection cut in 1988. Put 2 Yew inclosures in stand, put in IFMAP as soon as possible.
33	4119 - Mixed Northern Hardwoods	Poletimber Well	130.3	84	81-110	This stand contains a segment of the Wildwood Hills Pathway along its western boundary. The west edge has a gentle west/northwest facing slope to it, but the terrain is mostly gently rolling with a few steeper climbs, especially in the east. There is quite a lot of hemlock scattered throughout the stand. Elm, white ash, and yellow birch are also scattered in lesser densities. Pockets dominated by sugar maple pole timber. Overall densities (basal areas) are variable, as are diameters. A treatment exists through the center of the stand and should be reflected in a post-treatment update. Pockets of dense beech regen. BBD. OPIC - FMD: Ski trail runs thru, some hemlock scattered thru stand, some aspen towards south. Parts of stand were selection cut in 1988. Put 2 Yew inclosures in stand, put in IFMAP as soon as possible.
34	4111 - S.Maple, Hard Mast Association	Sawtimber Well	11.0	88	81-110	EAB and BBD present. Tiny sliver north of Wildwood Road is dominated by XL/L hemlock, pole sugar maple.
35	4110 - Sugar Maple Association	Sawtimber Well	30.1	95	81-110	Northwest facing slope. BBD, EAB present. Good stand to consider installing a deer enclosure around yellow birch and hemlock.



Stand	Level 4 Cover Type	Size Density	Acres	Stand Age	BA Range	General Comments:
36	4139 - Aspen, Mixed Deciduous	Sawtimber Well	2.2	92	81-110	Steep slope. Wildwood Hills trail runs through this stand, as does part of the MCCCT trail. Sapling/pole hemlock and sugar maple in understory. Found two balsam fir, <5" in height.
37	4130 - Aspen	Sapling Well	5.6	19	Immature	Harvested in 1997. Most sugar maple couldn't keep up with aspen and has been suppressed into the subcanopy. Larger diameter trees along old skid trails, edges, openings. Occasional pole/log mixed hardwood left from harvest in supercanopy position, ~1%. Hilly stand with a west/southwest aspect.
40	4191 - Mixed Upland Deciduous with Conifer	Poletimber Poor	1.8	36	1-50	Black knot in cherry. Ferns are fully stocked. Trace amounts of jack pine. G-type in previous inventory. Wildlife Division would like to treat to maintain as non-forested.
42	4111 - S.Maple, Hard Mast Association	Sawtimber Well	358.3	71	81-110	There are a few log-sized yellow birch in the canopy as well as pole. Stand data is largely influenced by QD data taken throughout this stand. There are varying densities and diameters throughout, also variable terrain, species composition, and wildlife usage. A site visit in the spring revealed very high stocking of sugar maple saplings <3'. OPIC - FMD: Rolling terrain, hold for another cycle.
43	4130 - Aspen	Sawtimber Well	0.6	86	111-140	MCCCT and wildwood hills pathway run through this stand. Aspen clone spreading - 52 year old aspen towards outer edge; 85 is best estimate on internal aspen (punky center). BBD present on what little beech are in the stand.
44	4116 - Mixed N. Hardwood - Aspen	Poletimber Medium	12.4	77	51-80	One hemlock, XL, in overstory; one yellow birch; couple of ironwood 7"; couple beech Log/Pole in canopy. BTA pole 8" - 67 years old. Most of the black cherry has died or is declining. Aspen, red maple are nearest Reams Road and transitioning to sugar maple, basswood in the east. Small opening along northeast boundary with some larger hardwood. Not a clean break between this stand and the timber to the south. OPIC - FMD: Ski trail runs thru, ridgeline runs along NE boundary. Been thinned sometime not long ago. Some hemlock scattered, lot's of coyote and deer tracks.
45	4130 - Aspen	Poletimber Well	12.1	43	81-110	Few pockets of log-sized aspen. 1 yellow birch on south hill in south; few hemlock (mostly scattered). Greater inclusion of red maple in the northeast. OPIC - FMD: Young aspen approaching pole size, cut in 1970.
47	42110 - Planted Red Pine	Sawtimber Well	23.8	59	111-140	BAs range from 80-180, averaging 119. MODE: 100. Tiny aspen clone in canopy in south. Lot of limby stock, probably thinned too early. Thinned in 2010, Presidio RP (52-114-07). OPIC - FMD: Planted in 1957, poor pine stand, lots of M3 and weeviled trees.



	Level 4 Cover Type	Size Density	Acres	Stand Age	BA Range	General Comments:
48	4191 - Mixed Upland Deciduous with Conifer	Sawtimber Well	8.5	61	51-80	Aspen clones in the north and southeast, otherwise dominated by mixed hardwood and conifer. Most of the hemlock barely reaches the canopy and remains a sub-canopy species. Sugar maple understory is largely >20' and less commonly saplings of variable heights. OPIC - FMD: Young aspen approaching pole size, cut in 1970. Sloping terrain, some hemlock. SM, RM and Ironwood understory. Aspen small, 5-6in class.
49	4119 - Mixed Northern Hardwoods	Sapling Medium	12.7	23	Immature	Basswood and white ash are present, <1%. Two balsam fir (2 from the same stump). Few black cherry logs present but could not be represented in MiFi. Clearcut in 1993. OPIC - FMD: M3 1 - 2in dia, 10-15 ft tall. Cut in 93.
52	42110 - Planted Red Pine	Sawtimber Well	43.2	59	111-140	Basal area is right at 140, ranging 100-170. Stand is a little less dense west of the trail. Couple quaking aspen in south canopy, <1%. Few red pine saplings along trail, especially along former non-forested opening in the southwest. Occasional bigtooth aspen on north end of the same former NF. Heavy browsing on sugar maple. One white spruce sapling in understory. Knapweed is along the road in the northwest. Red maple, sugar maple, black cherry present. Black knot in the cherry. (No "sap" red maple in overstory, but MiFi wouldn't accept P/L with the given average diameter.) Very small amount of ground juniper on ground. Cut in 2010, Presidio Red Pine (52-114-07). OPIC - FMD: planted in 1957.
53	4116 - Mixed N. Hardwood - Aspen	Sapling Poor	1.1	19	Immature	MCCCT runs through stand. Poor quality upland mixed deciduous - could be classified as non-forest. Black knot on cherry. East of trail appears to have been included in adjacent clearcut but was largely non-stocked to begin with. Portion west of the trail is being colonized by hardwood saplings.
54	4117 - Mixed N. Hardwood - Pine	Sapling Medium	11.4	16	Immature	**Sugar maple is present in Sap/Pole/Log but could not be represented in MiFi as such.** Mature timber on the edge of the south forest road, and again in the far north point. BAM and white ash dominate the north tip. A small pocket of XL timber just to the south of the aspen/ash component in the north. One small clone of QA in the east.
58	4133 - Aspen, Mixed Pine	Sawtimber Medium	3.0	60	111-140	Ironwood and red oak present in canopy in amounts less than 1%. Southeast corner is a very small inclusion of sugar maple saplings, cherry poles, red pine/jack pine and beech saplings. The aspen is deteriorating.
59	42110 - Planted Red Pine	Sawtimber Well	50.0	59	111-140	Mostly 8-10" range, bolts. Few 12+" dbh. 25% crowns, 30% on edges and around deciduous pockets. Some areas with higher densities after thinning. Cut in 2010, Presidio RP (52-114-07).
60	4191 - Mixed Upland Deciduous with Conifer	Sawtimber Well	15.6	76	81-110	EAB and BBD. Steep slope along west edge of stand, rest of stand to the east is a gradual [mostly] east facing slope. Dense sugar maple sapling stocking >20' in west; otherwise pockets of medium to high sugar maple regeneration. Northeast is dominated by beech, sugar maple, basswood; west and southwest are dominated by red pine, aspen. OPIC - FMD: Some Red pine scattered thru stand, porcupine activity. Stand sets on top of hill.



Stand	Gaylord Mgt. Unit		Report 8 – Forested Stands			Compartment: 143 Year of Entry: 2017
	Level 4 Cover Type	Size Density	Acres	Stand Age	BA Range	General Comments:
61	4111 - S.Maple, Hard Mast Association	Sawtimber Well	3.8	65	111-140	BBD and EAB present.
62	4117 - Mixed N. Hardwood - Pine	Sawtimber Well	3.0	67	111-140	No saplings in the canopy - it was the only way to code "Log/Pole". Mix of sapling/pole in the subcanopy for all species listed. Only one of each: white spruce and balsam fir. 1 dead jack pine snag, standing; a couple on the ground. Lot of multi-stemmed hardwood.
64	4110 - Sugar Maple Association	Sawtimber Well	11.2	73	81-110	EAB and BBD present. More pole-sized timber on flat ground adjacent to Wildwood Road, otherwise dominated by logs on the mostly south and southeast facing slopes; far west has a bit of a west aspect. 1 XL BTA in NW corner. 1 XL yellow birch (+a few dead standing). 1 XL Red maple. 1 XL Hemlock. 1 White spruce in understory, <5'. OPIC - FMD: Hilly, open nicely stocked, some nice SM logs. Selection cut in 1988.
65	4191 - Mixed Upland Deciduous with Conifer	Sawtimber Medium	3.1	46	51-80	Eastern portion of the stand has some young aspen, likely cut at the same time as the sale to the south, but there is still an overstory component of red maple, fir, and aspen. Less canopy closure in the east also. One white pine, 17", near the western boundary.
66	4110 - Sugar Maple Association	Poletimber Well	6.2	69	51-80	EAB and BBD present. Trace amounts of red maple. Tiny Non-Forest inclusion in the northwest - a merging/scramble area for ORVs. Opening contains staghorn sumac, quaking aspen, and a couple red pine saplings. Basswood and white ash mostly on ridge in south with transition into adjacent hardwood stand. Very steep slope in the west.
68	6128 - Lowland Coniferous, Mixed Deciduous	Sawtimber Well	2.3	83	51-80	Very dense canopy with hemlock understory >20'. Consider deer exclosure trial to see what will regenerate.
69	4116 - Mixed N. Hardwood - Aspen	Sawtimber Well	1.7	59	51-80	
70	4130 - Aspen	Sawtimber Well	0.8	86	111-140	Good quality bigtooth aspen, few quaking aspen on southeast edge.
71	4130 - Aspen	Sawtimber Well	3.7	73	111-140	Retained from adjacent clearcut (in 1999), likely due to dangerous operational hazards given the slope of the stand and proximity to Wildwood Road. This is a south facing slope, 20-70% depending on location. Poor quality, suppressed hardwood; good form (but declining) aspen. Beech bark disease present.
72	4319 - Mixed Upland Forest	Sawtimber Well	14.1	59	81-110	Inclusion of small (1/4 ac) non-forested opening in north including: ironwood, sugar maple, red pine, black cherry sapling/pole/log (northernmost tip). One juniper, 5-10'. Spindly red pine, 65-70'; good form, just previously neglected. Thinned in 2010, Presidio RP (52-114-07). Beech scale. Poor quality hardwood; multi-stemmed. No hardwood future; replant to red pine. Consistently larger, more dense (higher BA) red pine in south. Planted in 1957. Thinned last year of entry.





	Level 4 Cover Type	Size Density	Acres	Stand Age	BA Range	General Comments:
73	4119 - Mixed Northern Hardwoods	Poletimber Well	20.7	59	111-140	Some planted red pine remains in canopy; few deformed. Multi-stemmed beech, especially west edge and north half of stand. Immature hardwood transitioning from basswood/sugar maple in the south to beech/red maple/basswood/sugar maple in the north. Beech Bark Disease.
75	4110 - Sugar Maple Association	Poletimber Medium	2.4	31	51-80	Potential historical site. 2-track on south edge of stand into red pine. Variable stand. Red pine is a clump regenerating in the southeast atop a small knoll. Basswood volume is broken down as such: 20" XL/L accounts for 15% of overall canopy, Pole/Sap 6" accounts for 30% of canopy, giving basswood 45% of total.
76	42110 - Planted Red Pine	Sawtimber Well	15.7	59	171-200	BA ranges 130-230, mean: 190, mode: 200. 15-25% crowns. Few miscellaneous deciduous trees are in the canopy, mostly confined to the easternmost edge. Beech regeneration is clumpy; higher densities in some areas than others. Sugar maple regen has been browsed. Thinned in 2008. Mastodon RP (52-130-07).
77	6113 - Lowland Maple	Poletimber Medium	3.1	58	51-80	OPIC - FMD: OI Stand Year Origin was 1958
78	4130 - Aspen	Poletimber Well	41.9	44	111-140	Few pockets of oak, otherwise scattered fairly evenly throughout stand. Trace amounts of hemlock in the southwest. Also trace amounts of red pine, beech, and white ash in the canopy, <1%. Contracted clearcut in 1972. OPIC - FMD: APPROXIMATELY 1 ACRE OF ASPEN WAS CUT BY WEHYERHAUSER IN 2000 AS PART OF A PRIVATE SALE ALONG REAMS ROAD. PERMISSION WAS GOTTEN TO CUT THE SMALL ACREAGE WHILE PRODUCER WAS THERE. Some scattered hemlock, hilly area's of poor quality small aspen.
79	4130 - Aspen	Sawtimber Well	3.1	94	111-140	Three acre aspen stand. Many pole/sap sugar maple and red maple are suppressed under aspen and do not make canopy. One balsam fir in the subcanopy, sapling <5'. Dirtbike trail runs through stand. northern portion of stand. Illegal access off of Berry Creek. Stand sits in a small bowl and has potential to accumulate some run-off from adjacent terrain and road in the spring.
80	4119 - Mixed Northern Hardwoods	Poletimber Well	10.4	78	81-110	Low quality, multi-stemmed hardwood. Worrisome regeneration in areas - some dense beech, dense ironwood in areas. Northwest is less dense but dominated by beech poles. Dirtbike trail runs through stand.
82	4110 - Sugar Maple Association	Poletimber Medium	8.4	78	51-80	Dense, well developed sapling understory. Trace amounts of white ash in the canopy.



	Level 4 Cover Type	Size Density	Acres	Stand Age	BA Range	General Comments:
<b>83</b>	4112 - Maple, Beech, Cherry Association	Sawtimber Well	25.1	85	51-80	Stand is similar to the stand to the west of Cedar Creek, except that there is more black cherry and slightly lesser quality on this site. Unique "gorge" protects Cedar Creek. Very small, 1/10th ac, opening in the northern extreme. Portions of this stand were select cut in 1987, residual BA is 70-100 in these areas. Other basal areas are quite a bit higher, left uncut, likely due to more sensitive soils and proximity to the creek. This stand was separated from stand 7 (to the west of Cedar Creek) post-inventory, so the data is influenced by QD and my recollection of the stand without revisiting it. OPIC - FMD: Nice SM understory coming in, 3-4in class. Selection cut in 1987.
<b>409</b>	4199 - Other Mixed Upland Deciduous	Poletimber Poor	1.8	17	Immature	Scattered cherry and pine with an aspen clone in the southwest. Non-forest opening being taken over by mixed woody vegetation. Wildlife Division would like to re-claim as opening through maintenance.
<b>410</b>	4110 - Sugar Maple Association	Sapling Poor	2.0	16	Immature	Wildwood Hills Pathway runs along part of the south edge of the stand. Hilly. No management regime or value. Sandy. 1 XL sugar maple, dead sumac, 1 dead white ash, and mullein (trace). Wildlife Division would like to re-claim as opening through maintenance.



Stand	Cover Type	Acres	Managed Site	General Comments:
12	6220 - Alder/willow	2.4	No	Tag alder swamp with a few miscellaneous trees/shrubs, especially on the edges.
38	3102 - Grass	0.4	No	Grassy opening with encroaching aspen in west. Black knot on cherry.
39	790 - Other Bare/Sparsely Vegetate	3.6	No	MCCCT runs though this stand. It is low-density trees with a mix of sapling/pole sized deciduous and coniferous species. Black knot on some of the cherry. Greater density of hardwood regeneration along trail in disturbed soils.
41	790 - Other Bare/Sparsely Vegetate	1.0	No	Utilized by vehicles and equipment for staging/parking.
46	122 - Road/Parking Lot	1.9	No	Road and cleared right-of-way. Far west is a trespass, building and mowing on State property.
50	310 - Herbaceous Openland	1.1	No	
51	3102 - Grass	0.9	No	Seasonal road/snowmobile trail and Wildwood Hills ski trail run though this stand. Cherry present as saplings/poles/logs.
55	3102 - Grass	1.8	No	Trespass on northwest corner - old barn/out buildings.
56	3102 - Grass	1.5	No	Mostly Reams Road; includes non-forested grassy areas with woody vegetation encroachment.
57	3303 - Mixed Low Density Trees	2.0	Yes	Non-forest stand being reclaimed by mixed coniferous and deciduous species.
63	310 - Herbaceous Openland	2.1	No	
67	3102 - Grass	0.8	Yes	Power line maintained by utility company.
74	760 - Non-stocked Forest	0.4	No	Non-forested opening being colonized on the edges (especially south and west) by mixed deciduous species: beech, black cherry, basswood, white ash, ironwood, sugar maple, and quaking aspen. Mostly sapling sized, few pole/log.
81	310 - Herbaceous Openland	0.7	No	
401	3303 - Mixed Low Density Trees	7.7	No	Red pine of variable diameters, including sapling, pole, and log sized trees. CAREFUL of scotch pine seeding in. Low density trees, colonizing hardwood, aspen, conifers. ORV use with a small scramble area to the southwest of this stand in the adjacent compartment. OPIC - FMD: STAND HAS SOME OLD APPLE TREES, some pin cherry clumps scattered thru.



Stand	Cover Type	Acres	Managed Site	General Comments:
402	330 - Low-Density Trees	1.6	No	"No Trespassing" signs point towards PVT on north side. Trespasses: two-track from private onto State leading to a blind that is right on the edge of the State/PVT boundary. Landowner has pruned saplings and red pine to create a shooting lane. OPIC - FMD: Field boundaries private on west, red pine stand on the east.
405	330 - Low-Density Trees	3.2	Yes	White pine of varying diameters: S/P/L. Opening being colonized by sapling, occasionally pole and log, mixed hardwood and pine. OPIC - FMD: grassy opening with some cherry, w.pine, and staghorn sumac scattered thruout.
411	122 - Road/Parking Lot	3.0	No	Wildwood Hills Trails West-entrance parking lot. Outhouse and trail board on site.
412	330 - Low-Density Trees	1.2	Yes	Cherry present as pole and sap too, not just log. Trace amounts of mullein. 1 sugar maple XL on southwest edge with burls. (1 white ash sap, <5'.)
413	31029 - Grass (OI)	1.5	Yes	Ski trail along north edge. Mullein in trace amounts. Heavy browsing on sugar maple and white ash. Encroaching sugar maple in southwest corner. Also hemlock (log) multi-stemmed + 1 sap.
415	3102 - Grass	53.2	Yes	Black walnut regenerating in small groves; saplings of variable heights. Old foundation in the middle of the stand; small orchard. Hardwood establishing under aspen clones. Trace amounts of mullein. Black know it the cherry. XL Sugar maple scattered. The north acreage (from the bottle-neck up) is similar in composition as the southern portion except that there are dense pockets of hardwood regeneration. OPIC - FMD: Large G type with scattered small clumps of maple regen and staghorn sumac. Wildwood ski trail and ccct trails run thru it. Some small aspen clones in the north part, apple trees. Protect Walnut and hickory when prescribed burning.
418	760 - Non-stocked Forest	2.0	No	Multi-stemmed, low quality maple, cherry. Non-stocked mixed deciduous with red pine.
419	330 - Low-Density Trees	35.3	No	Lots of pole-sized multi-stemmed black cherry. Prolific black knot in the cherry. Low quality deciduous trees. Clump of hardwood on knoll: sugar maple, beech, red maple, basswood. Most trees are multi-stemmed. Few aspen clones dotting the stand. Few large, old stumps.
420	3102 - Grass	1.7	Yes	Wildwood Hills Pathway runs through this stand. Sapling/pole cherry, bigtooth aspen, and red pine. One log-sized white ash with EAB. Occasional bigtooth aspen seeding into open field (not including the aspen on the edges). 1 red maple, multi-stemmed pole in southeast. Planted spruce along west edge adjacent to private.