

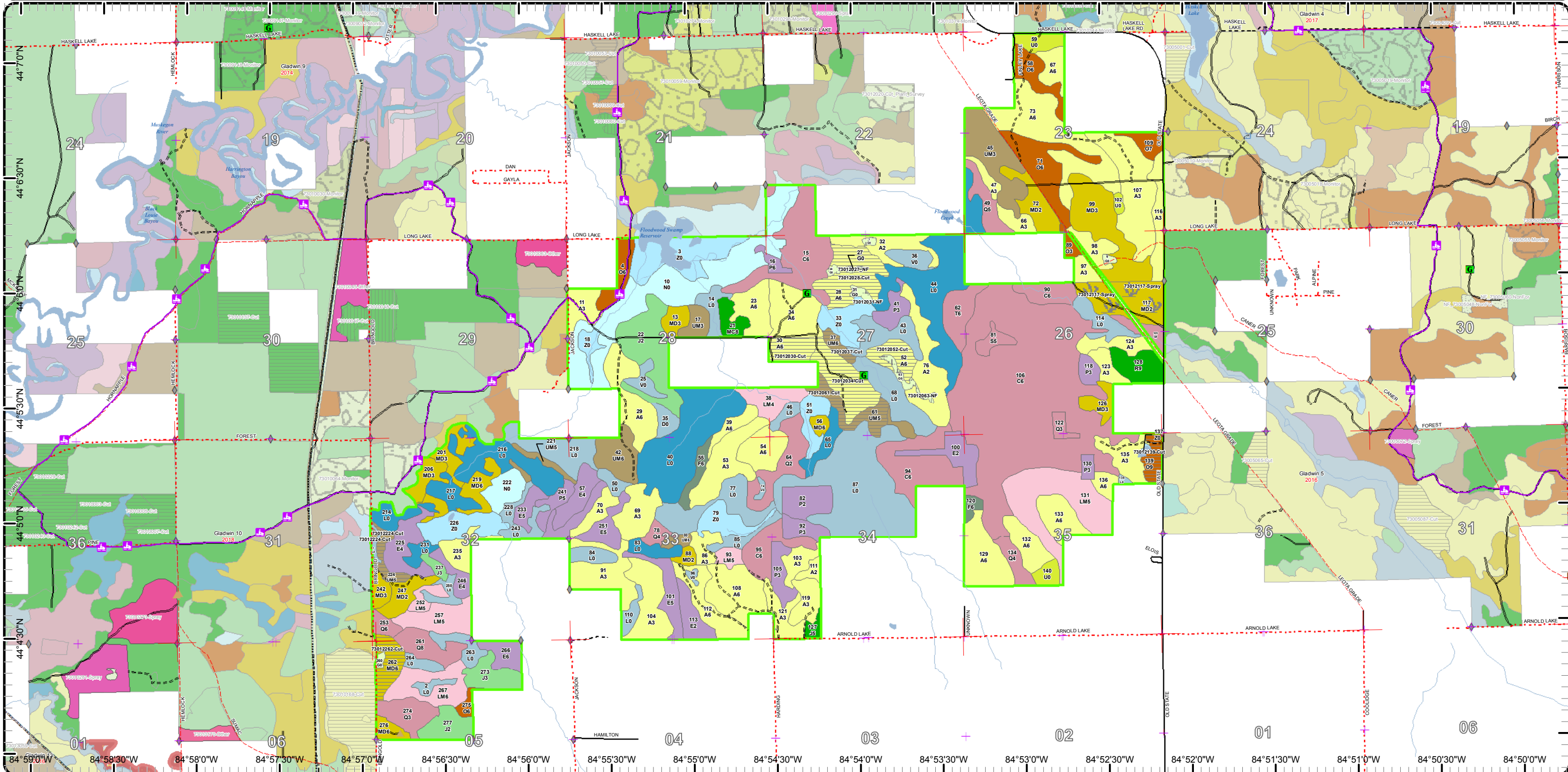
# Cover Type & Treatments Map

Compartment: 12  
 T19N - R05W Sec. 05  
 T20N - R05W Sec. 22,23,26-29,32-35  
 County: Clare  
 Unit: Gladwin  
 Mgmt Area: Kirtland's Warbler  
 YOE: 2021  
 Acres: 3,994 GIS Calculated  
 Examiner: Steve Nyhoff  
 Map Revised: 10/28/2019  
 Map Phase: Post-Review



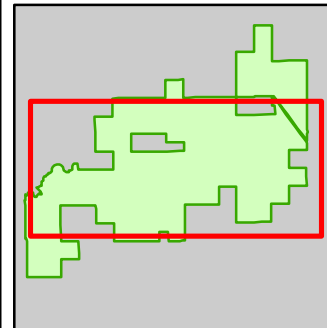
1 Miles

- Miris Corners
- + Remonumented Section Corners
- ◆ Field Grade Corners
- ▭ Counties
- == DNR - Secondary Forest Road
- ≡ DNR - Forest Access Route
- Federal / State / County - Paved Road
- - Federal / State - Dirt / Gravel Road
- . . County - Gravel Road
- - - County - Dirt Road (Seasonal)
- - - Private - Dirt / Gravel Road
- ⚡ Snowmobile Trails
- Designated Snowmobile Trails
- ▲ Berms
- G** Gate
- Culvert
- Intermittent Stream
- Lake/Pond
- Perennial River
- Lakes and Rivers
- Pipeline
- Compartment Boundary
- Pesticide
- Other Treatment - See Comments
- Clearcut (w/Reserves)
- 412 - Oak Types
- 413 - Aspen
- 419 - Mixed Upland Deciduous
- 421 - Planted Pines
- 422 - Natural Pines
- 423 - Other Upland Conifers
- 430 - Upland Mixed Forest
- 611 - Lowland Deciduous Forest
- 612 - Lowland Coniferous Forest
- 613 - Lowland Mixed Forest
- 310 - Herbaceous Openland
- 330 - Low Density Trees
- 500 - Water
- 622 - Lowland Shrub
- 623 - Emergent Wetland
- 629 - Mixed non-forested wetland

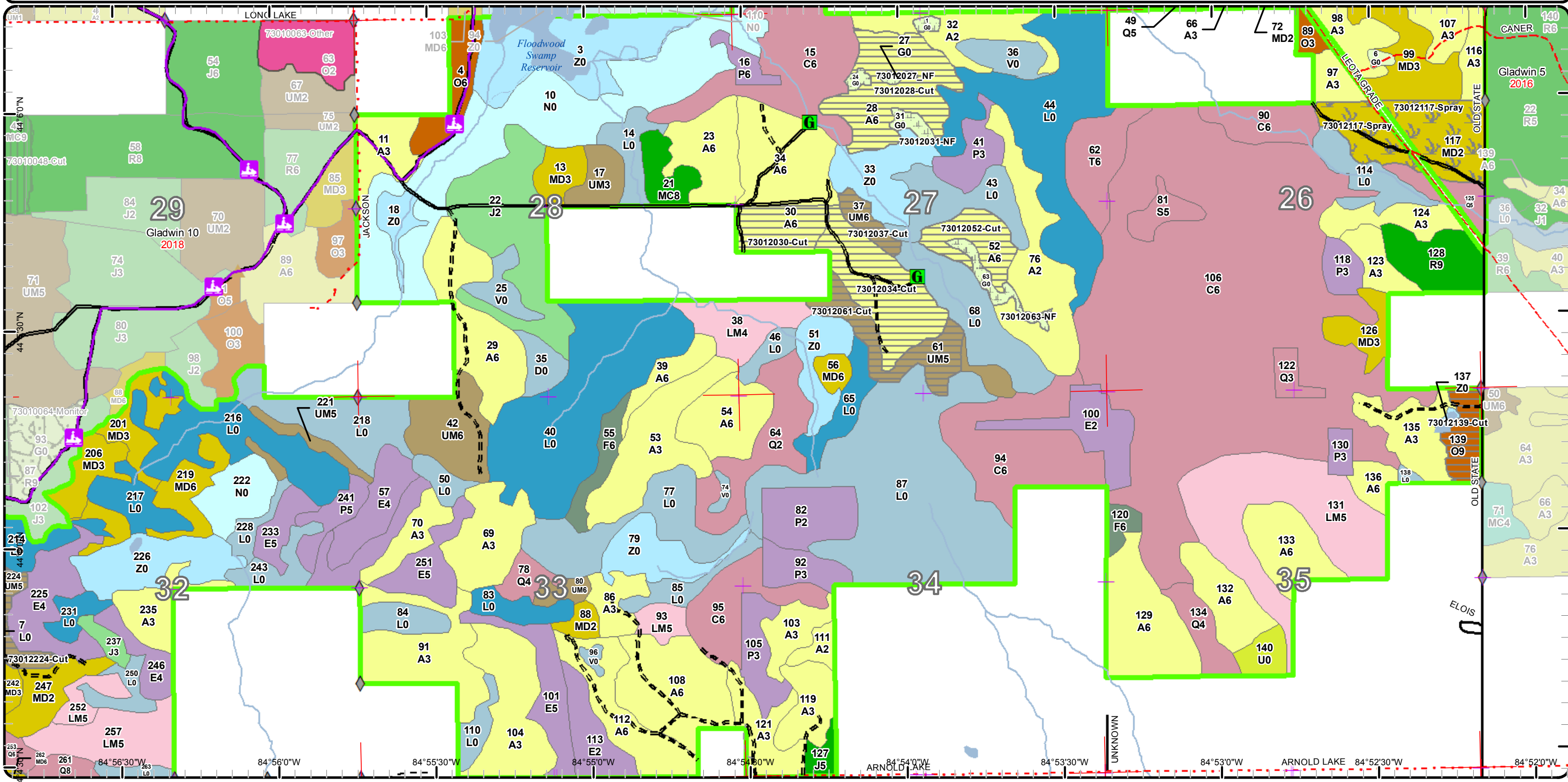


# Cover Type & Treatments Map

Compartment: 12  
 T19N - R05W Sec. 05  
 T20N - R05W Sec. 22,23,26-29,32-35  
 County: Clare  
 Unit: Gladwin  
 Mgmt Area: Kirtland's Warbler  
 YOE: 2021  
 Acres: 3,994 GIS Calculated  
 Examiner: Steve Nyhoff  
 Map Revised: 10/28/2019  
 Map Phase: Post-Review 0.5

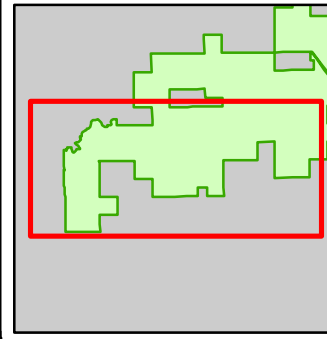


- Miris Corners
- + Remonumented Section Corners
- ◆ Field Grade Corners
- Counties
- DNR - Secondary Forest Road
- DNR - Forest Access Route
- Federal / State / County - Paved Road
- County - Gravel Road
- County - Dirt Road (Seasonal)
- Private - Dirt / Gravel Road
- Snowmobile Trails
- Designated Snowmobile Trails
- ▲ Berms
- Gate
- Intermittent Stream
- Lake/Pond
- Perennial River
- Lakes and Rivers
- Compartment Boundary
- Pesticide
- Clearcut (w/Reserves)
- 412 - Oak Types
- 413 - Aspen
- 419 - Mixed Upland Deciduous
- 421 - Planted Pines
- 422 - Natural Pines
- 423 - Other Upland Conifers
- 430 - Upland Mixed Forest
- 611 - Lowland Deciduous Forest
- 612 - Lowland Coniferous Forest
- 613 - Lowland Mixed Forest
- 310 - Herbaceous Openland
- 330 - Low Density Trees
- 500 - Water
- 622 - Lowland Shrub
- 623 - Emergent Wetland
- 629 - Mixed non-forested wetland

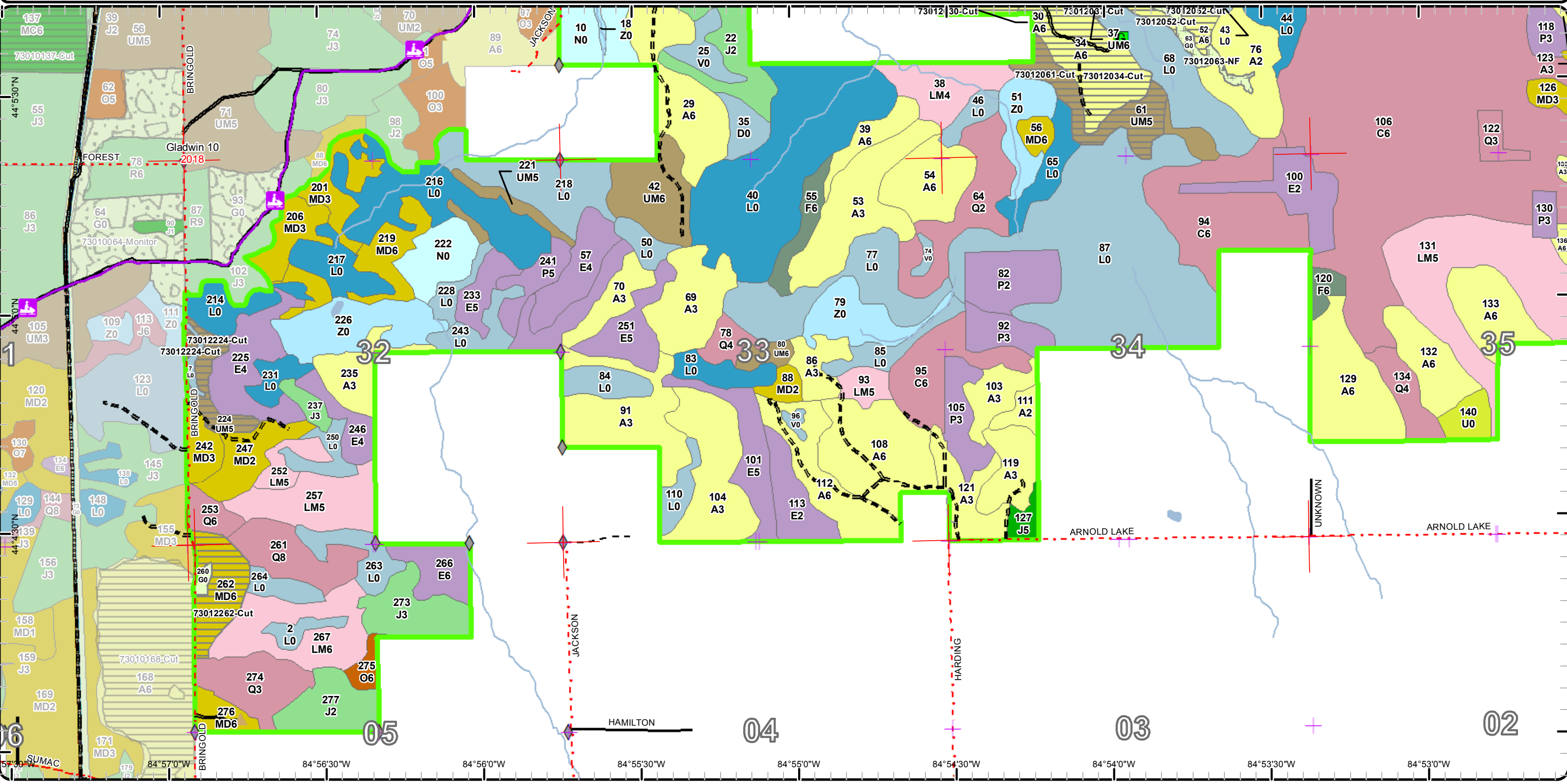


# Cover Type & Treatments Map

Compartment: 12  
 T19N - R05W Sec. 05  
 T20N - R05W Sec. 22,23,26-29,32-35  
 County: Clare  
 Unit: Gladwin  
 Mgmt Area: Kirtland's Warbler  
 YOE: 2021  
 Acres: 3,994 GIS Calculated  
 Examiner: Steve Nyhoff  
 Map Revised: 10/28/2019  
 Map Phase: Post-Review 0.5



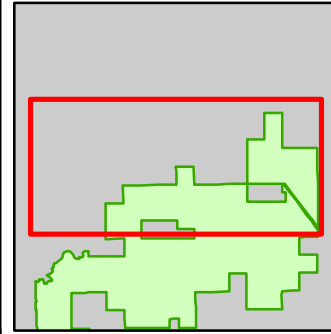
- Miris Corners
- + Remonumented Section Corners
- ◆ Field Grade Corners
- Counties
- == DNR - Secondary Forest Road
- == DNR - Forest Access Route
- Federal / State / County - Paved Road
- - Federal / State - Dirt / Gravel Road
- . . County - Gravel Road
- - Private - Dirt / Gravel Road
- 🚡 Snowmobile Trails
- ▲ Berms
- 🚪 Gate
- Lake/Pond
- Perennial River
- Lakes and Rivers
- Pipeline
- Compartment Boundary
- Other Treatment - See Comments
- Clearcut (w/Reserves)
- 412 - Oak Types
- 413 - Aspen
- 419 - Mixed Upland Deciduous
- 421 - Planted Pines
- 422 - Natural Pines
- 423 - Other Upland Conifers
- 430 - Upland Mixed Forest
- 611 - Lowland Deciduous Forest
- 612 - Lowland Coniferous Forest
- 613 - Lowland Mixed Forest
- 310 - Herbaceous Openland
- 330 - Low Density Trees
- 500 - Water
- 622 - Lowland Shrub
- 623 - Emergent Wetland
- 629 - Mixed non-forested wetland



84°57'30"W 84°56'30"W 84°56'0"W 84°55'30"W 84°55'0"W 84°54'30"W 84°54'0"W 84°53'30"W 84°53'0"W

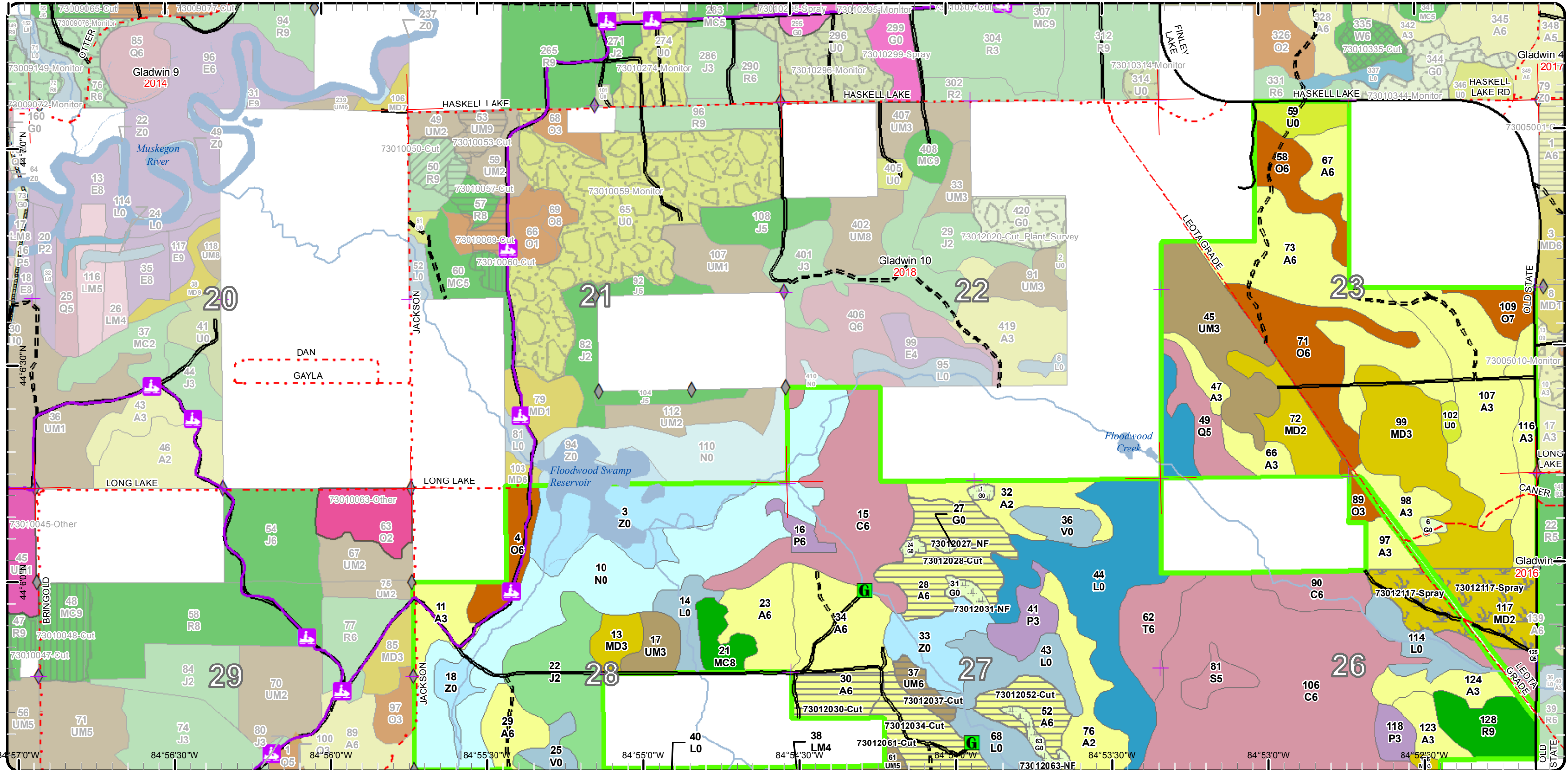
# Cover Type & Treatments Map

Compartment: 12  
 T19N - R05W Sec. 05  
 T20N - R05W Sec. 22,23,26-29,32-35  
 County: Clare  
 Unit: Gladwin  
 Mgmt Area: Kirtland's Warbler  
 YOE: 2021  
 Acres: 3,994 GIS Calculated  
 Examiner: Steve Nyhoff  
 Map Revised: 10/28/2019  
 Map Phase: Post-Review 0.5



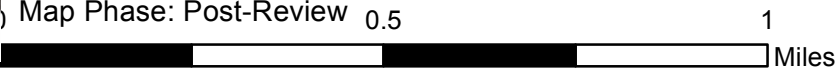
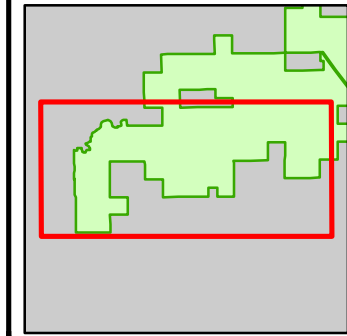
1  
Miles

- Miris Corners
- + Remonumented Section Corners
- ◆ Field Grade Corners
- ▭ Counties
- == DNR - Secondary Forest Road
- == DNR - Forest Access Route
- Federal / State / County - Paved Road
- - - County - Gravel Road
- - - County - Dirt Road (Seasonal)
- 🚙 Snowmobile Trails
- 🚙 Designated Snowmobile Trails
- ▲ Berms
- ⬢ Gate
- Intermittent Stream
- Lake/Pond
- Perennial River
- Lakes and Rivers
- Pipeline
- ▭ Compartment Boundary
- ▭ Pesticide
- ▭ Other Treatment - See Comments
- ▭ Clearcut (w/Reserves)
- ▭ 412 - Oak Types
- ▭ 413 - Aspen
- ▭ 419 - Mixed Upland Deciduous
- ▭ 421 - Planted Pines
- ▭ 422 - Natural Pines
- ▭ 430 - Upland Mixed Forest
- ▭ 611 - Lowland Deciduous Forest
- ▭ 612 - Lowland Coniferous Forest
- ▭ 310 - Herbaceous Openland
- ▭ 330 - Low Density Trees
- ▭ 500 - Water
- ▭ 622 - Lowland Shrub
- ▭ 623 - Emergent Wetland
- ▭ 629 - Mixed non-forested wetland

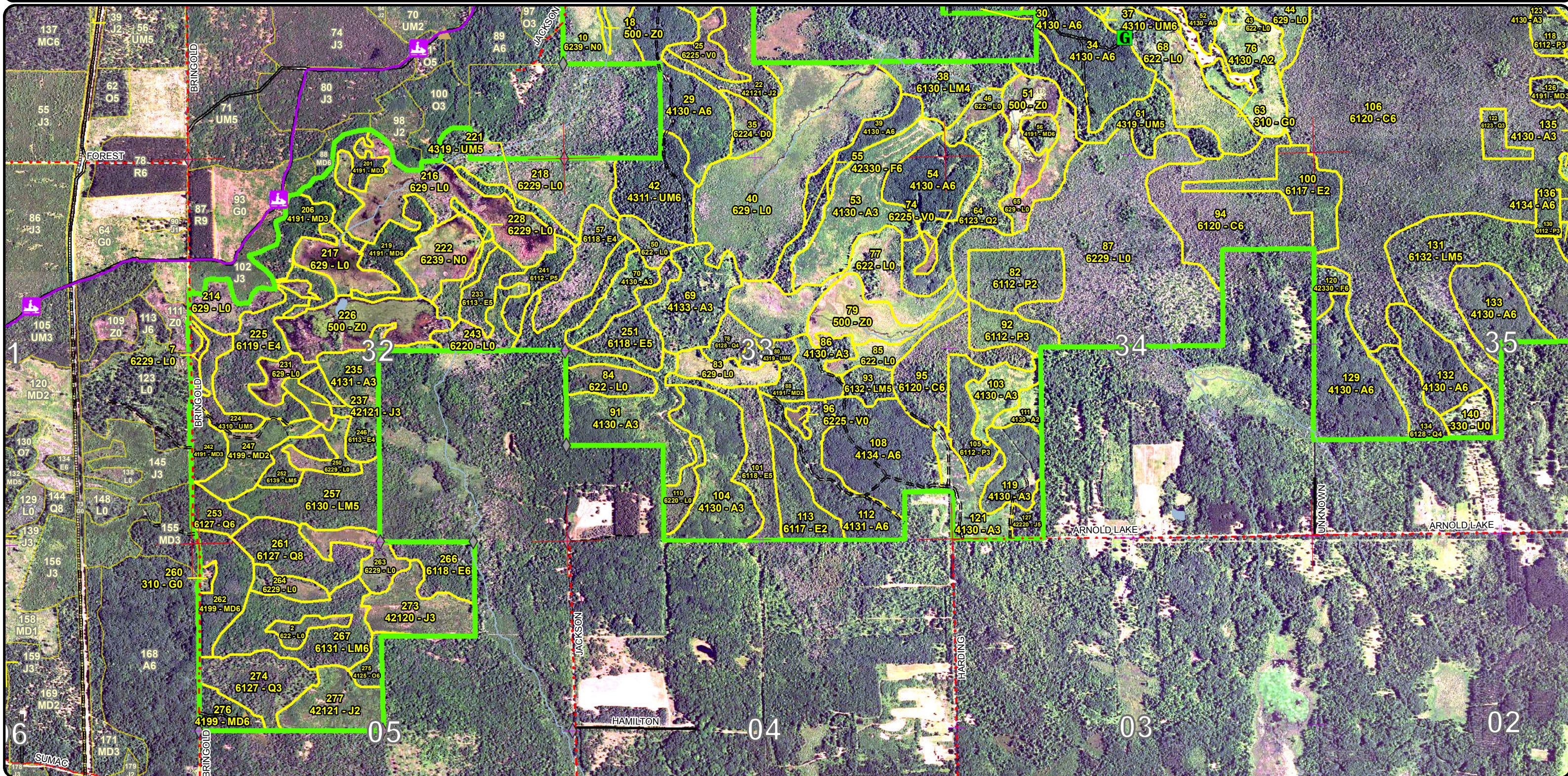


# Stand Boundary Map

Compartment: 12  
 T19N - R05W Sec. 05  
 T20N - R05W Sec. 22,23,26-29,32-35  
 County: Clare  
 Unit: Gladwin  
 Mgmt Area: Kirtland's Warbler  
 YOE: 2021  
 Acres: 3,994 GIS Calculated  
 Examiner: Steve Nyhoff  
 Map Revised: 10/28/2019  
 Map Phase: Post-Review 0.5

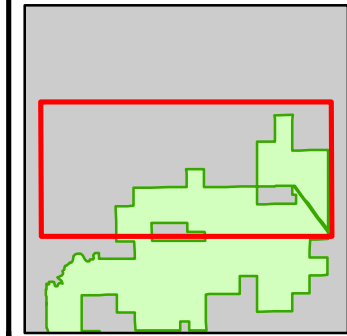


- Miris Corners
- + Remonumented Section Corners
- ◆ Field Grade Corners
- Counties
- DNR - Secondary Forest Road
- DNR - Forest Access Route
- Federal / State / County - Paved Road
- Federal / State - Dirt / Gravel Road
- County - Gravel Road
- Private - Dirt / Gravel Road
- Snowmobile Trails
- Designated Snowmobile Trails
- ▲ Berms
- Gate
- Lake/Pond
- Perennial River
- Lakes and Rivers
- Pipeline
- Compartment Boundary
- Stand Boundaries
- 612 - Lowland Coniferous Forest
- 613 - Lowland Mixed Forest
- 310 - Herbaceous Openland
- 330 - Low Density Trees
- 500 - Water
- 622 - Lowland Shrub
- 623 - Emergent Wetland
- 629 - Mixed non-forested wetland
- 412 - Oak Types
- 413 - Aspen
- 419 - Mixed Upland Deciduous
- 421 - Planted Pines
- 422 - Natural Pines
- 423 - Other Upland Conifers
- 430 - Upland Mixed Forest
- 611 - Lowland Deciduous Forest



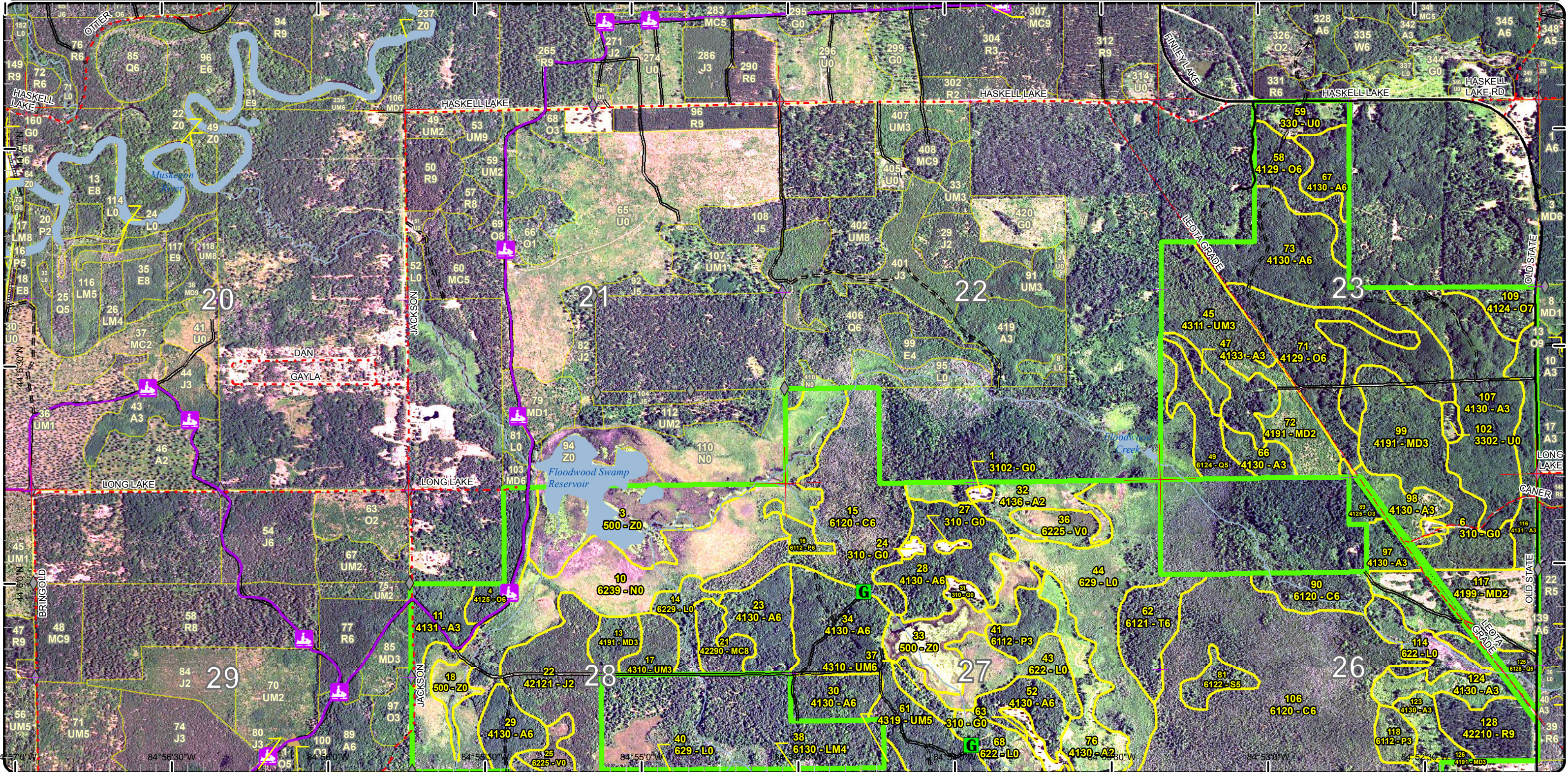
# Stand Boundary Map

Compartment: 12  
 T19N - R05W Sec. 05  
 T20N - R05W Sec. 22,23,26-29,32-35  
 County: Clare  
 Unit: Gladwin  
 Mgmt Area: Kirtland's Warbler  
 YOE: 2021  
 Acres: 3,994 GIS Calculated  
 Examiner: Steve Nyhoff  
 Map Revised: 10/28/2019  
 Map Phase: Post-Review 0.5

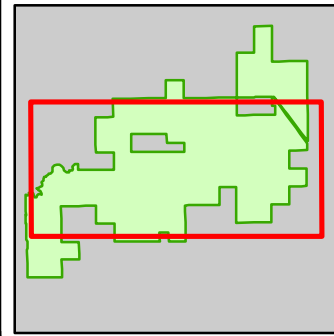


1 Miles

- Miris Corners
- + Remonumented Section Corners
- ◆ Field Grade Corners
- Counties
- == DNR - Secondary Forest Road
- == DNR - Forest Access Route
- Federal / State / County - Paved Road
- - - County - Gravel Road
- - - County - Dirt Road (Seasonal)
- Ⓜ Snowmobile Trails
- Ⓜ Designated Snowmobile Trails
- ▲ Berms
- Ⓜ Gate
- Intermittent Stream
- Lake/Pond
- Perennial River
- Lakes and Rivers
- Pipeline
- Compartment Boundary
- Stand Boundaries
- 310 - Herbaceous Openland
- 330 - Low Density Trees
- 500 - Water
- 622 - Lowland Shrub
- 623 - Emergent Wetland
- 629 - Mixed non-forested wetland
- 412 - Oak Types
- 413 - Aspen
- 419 - Mixed Upland Deciduous
- 421 - Planted Pines
- 422 - Natural Pines
- 430 - Upland Mixed Forest
- 611 - Lowland Deciduous Forest
- 612 - Lowland Coniferous Forest



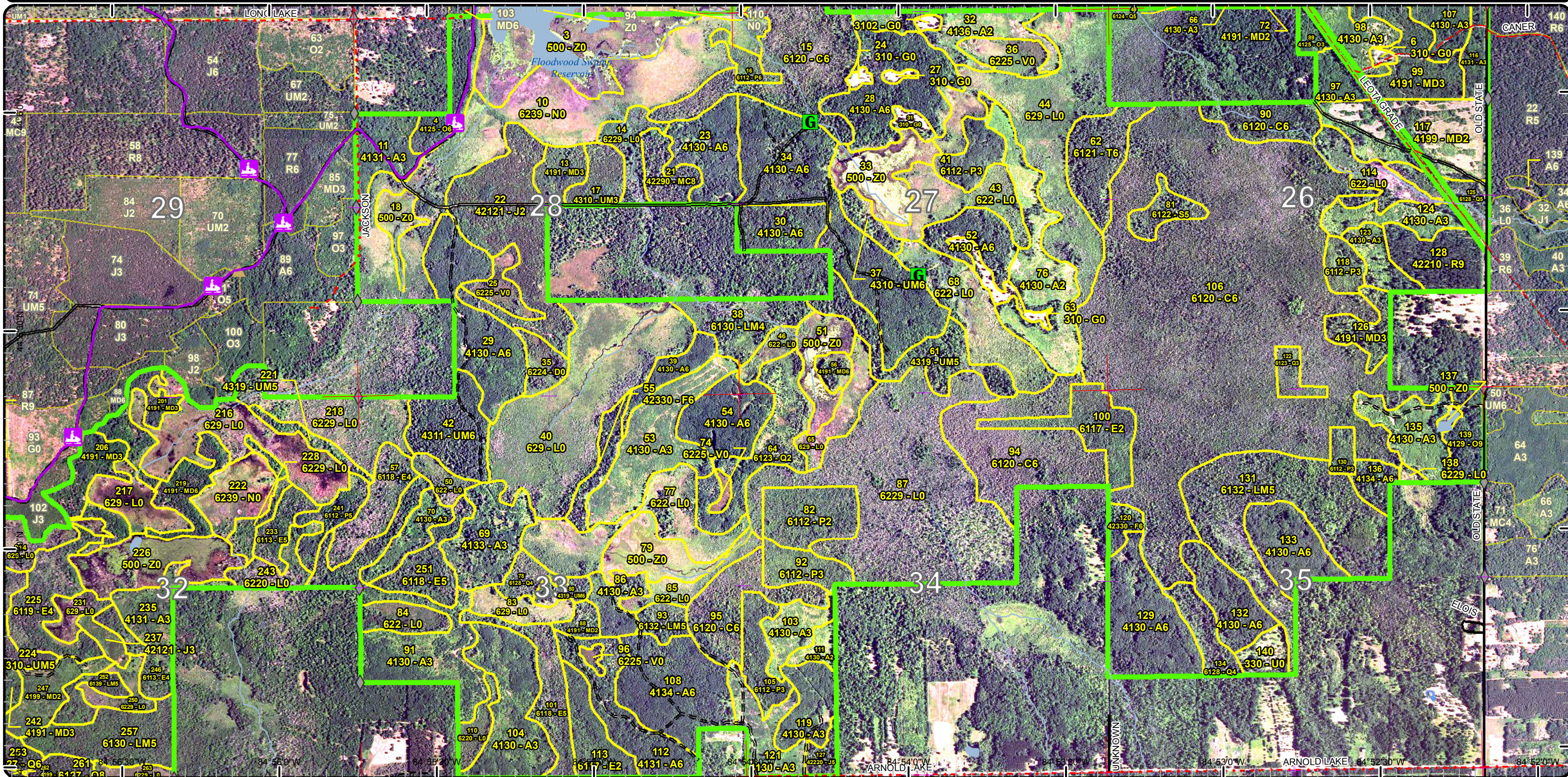
# Stand Boundary Map



Compartment: 12  
 T19N - R05W Sec. 05  
 T20N - R05W Sec. 22,23,26-29,32-35  
 County: Clare  
 Unit: Gladwin  
 Mgmt Area: Kirtland's Warbler  
 YOE: 2021  
 Acres: 3,994 GIS Calculated  
 Examiner: Steve Nyhoff  
 Map Revised: 10/28/2019  
 Map Phase: Post-Review 0.5

1 Miles

- Miris Corners
  - Remonumented Section Corners
  - Field Grade Corners
  - Counties
  - DNR - Secondary Forest Road
  - DNR - Forest Access Route
  - Federal / State / County - Paved Road
  - County - Gravel Road
  - County - Dirt Road (Seasonal)
  - Private - Dirt / Gravel Road
  - Snowmobile Trails
  - Designated Snowmobile Trails
  - Berms
  - Gate
  - Intermittent Stream
  - Lake/Pond
  - Perennial River
  - Lakes and Rivers
  - Compartment Boundary
  - Stand Boundaries
- 612 - Lowland Coniferous Forest
  - 613 - Lowland Mixed Forest
  - 310 - Herbaceous Openland
  - 330 - Low Density Trees
  - 500 - Water
  - 622 - Lowland Shrub
  - 623 - Emergent Wetland
  - 629 - Mixed non-forested wetland
  - 412 - Oak Types
  - 413 - Aspen
  - 419 - Mixed Upland Deciduous
  - 421 - Planted Pines
  - 422 - Natural Pines
  - 423 - Other Upland Conifers
  - 430 - Upland Mixed Forest
  - 611 - Lowland Deciduous Forest

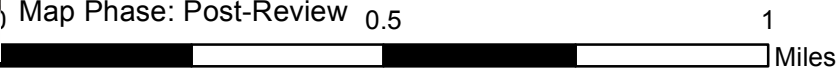
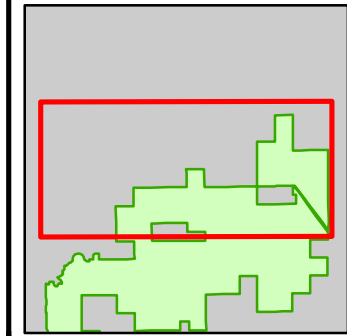






# Special Conservation Areas & Site Conditions Map

Compartment: 12  
 T19N - R05W Sec. 05  
 T20N - R05W Sec. 22,23,26-29,32-35  
 County: Clare  
 Unit: Gladwin  
 Mgmt Area: Kirtland's Warbler  
 YOE: 2021  
 Acres: 3,994 GIS Calculated  
 Examiner: Steve Nyhoff  
 Map Revised: 10/28/2019  
 Map Phase: Post-Review 0.5



- Miris Corners
- Remonumented Section Corners
- Field Grade Corners
- Counties
- DNR - Secondary Forest Road
- DNR - Forest Access Route
- Federal / State / County - Paved Road
- County - Gravel Road
- County - Dirt Road (Seasonal)
- Snowmobile Trails
- Designated Snowmobile Trails
- Berms
- Gate
- Intermittent Stream
- Lake/Pond
- Perennial River
- Lakes and Rivers
- Pipeline
- Compartment Boundary
- Available w/ Constraints
- Unavailable
- 5B: Maintain for regeneration purposes
- 2G: Too wet (sensitive soils, does not include access issues)
- 5E: Long-Term Retention
- Stand Boundaries
- SCA
- Kirtland Warbler Habitat
- Cold Water Streams
- Cold Water Lakes
- Wildlife Management Areas
- Other Habitat Area

