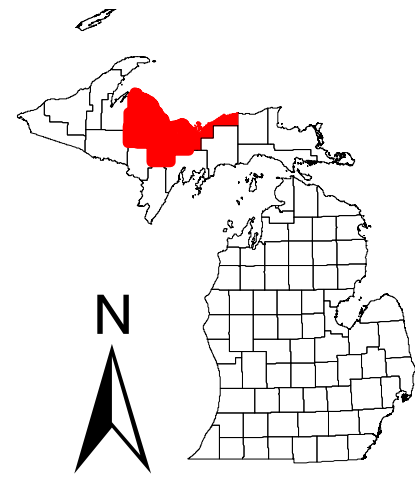
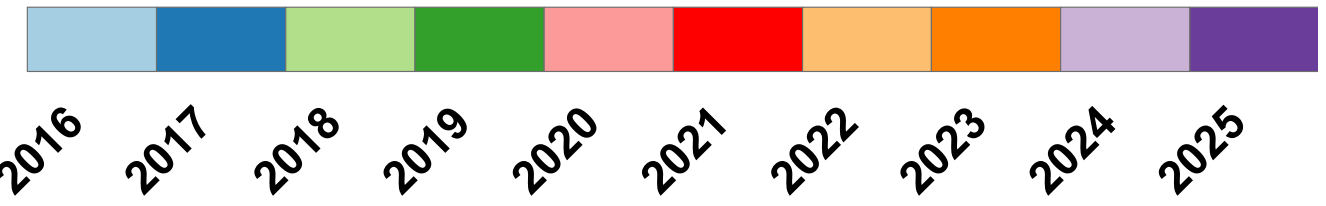


Gwinn Management Unit State Forest Compartments by Year of Entry

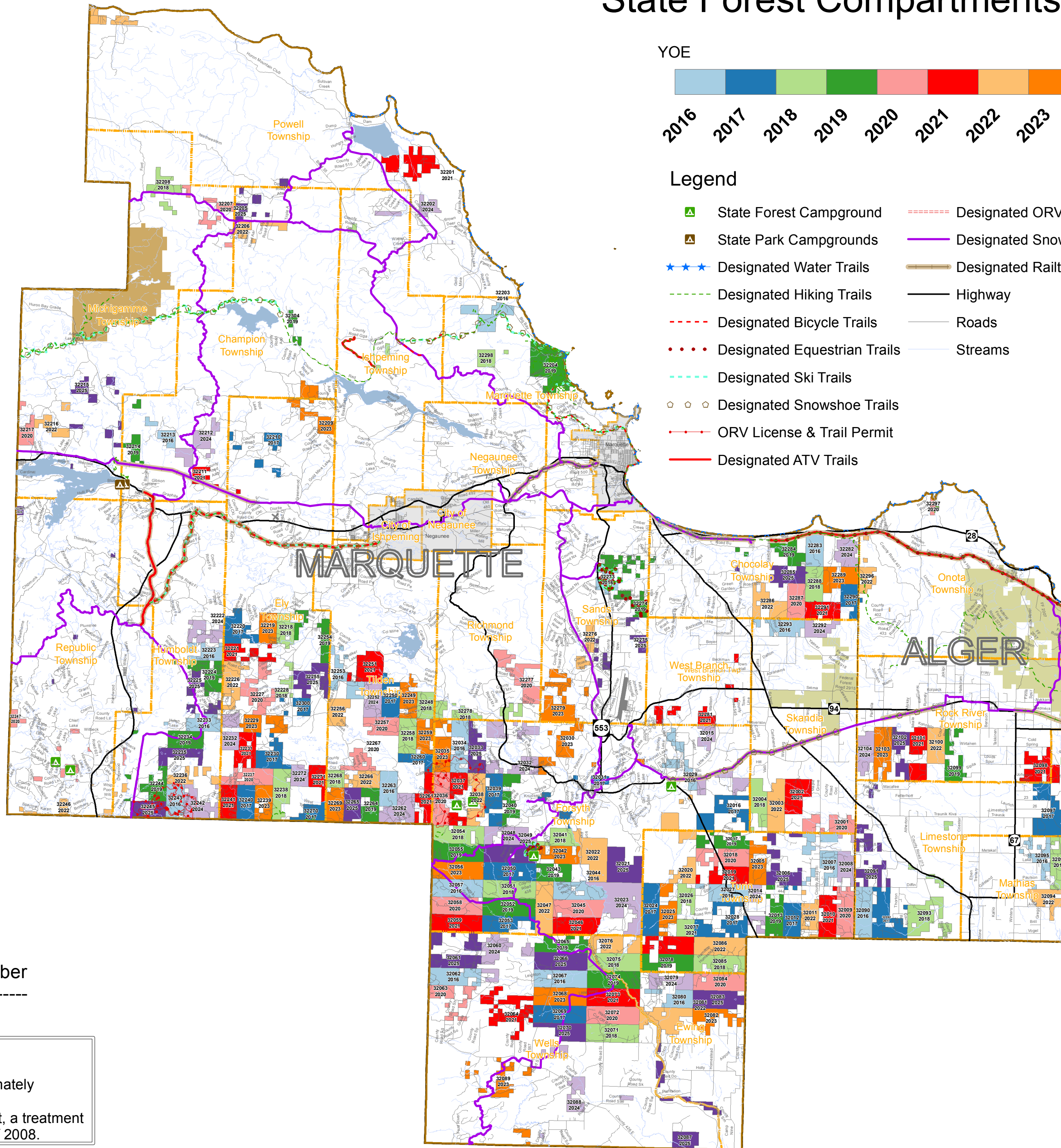


YOE



Legend

- | | | |
|------------------------------|------------------------------|--------------------|
| State Forest Campground | Designated ORV Routes | Counties |
| State Park Campgrounds | Designated Snowmobile Trails | Lakes and Rivers |
| Designated Water Trails | Designated Railtrail | Airports |
| Designated Hiking Trails | Highway | Cities |
| Designated Bicycle Trails | Roads | Townships |
| Designated Equestrian Trails | Streams | Hiawatha Ownership |
| Designated Ski Trails | | Ottawa Ownership |
| Designated Snowshoe Trails | | |
| ORV License & Trail Permit | | |
| Designated ATV Trails | | |



58 Compartment Number

----- = -----
2016 Year of Entry

Year of Entry (YOE) represents the fiscal year treatments will be initiated. Treatment decisions are made approximately 1-2 years before the Year of Entry. Example: For a 2010 YOE compartment, a treatment decision is made in the calendar year of 2008.

