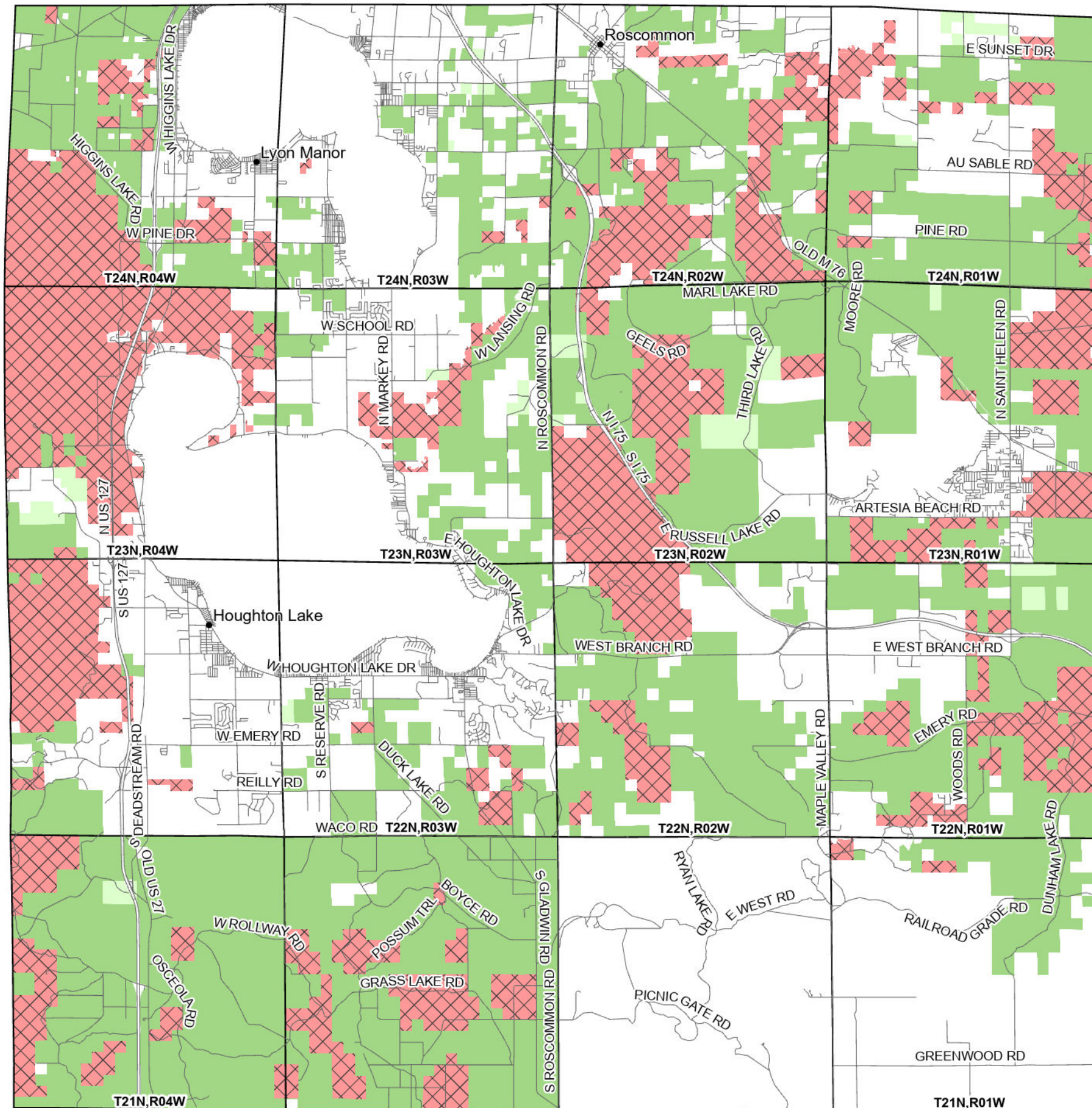


# 2026 POLITICAL TOWNSHIP LOCATION ROSCOMMON COUNTY Effective April 1, 2026

If you need assistance with this map, email [DNR-Forestry](mailto:DNR-Forestry) or call 517-284-5900



- State Forest Land Fuelwood Permissions
- Open (Recently Closed Timber Sale)
  - Open
  - Open (Military Restrictions – Possible closure from May to September)
  - Closed

Detailed maps are available from permitting office and DNR website for blocks on map identified by town and range numbers such as T27N, R06W

