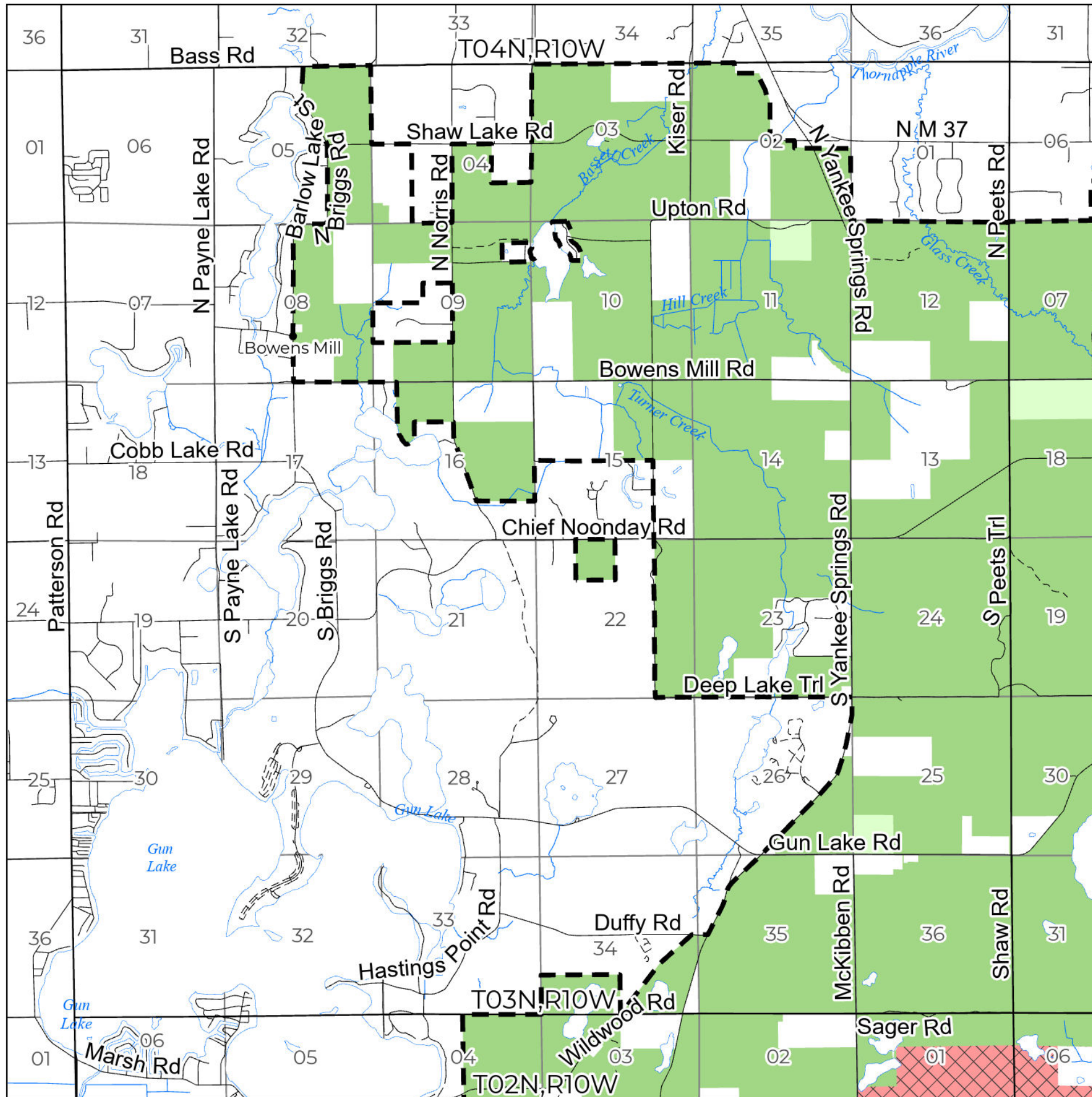


2026 FUELWOOD COLLECTION  
**BARRY STATE GAME AREA**  
**T03N, R10W**  
 Barry County

If you need assistance with this map, email [DNR-Forestry](mailto:DNR-Forestry) or call 517-284-5900



- State Forest Land Fuelwood Permissions Quarter Quarters
- Open (Recently Closed Timber Sale)
  - Open
  - Open (Military Restrictions – Possible closure from May to September)
  - Closed

