

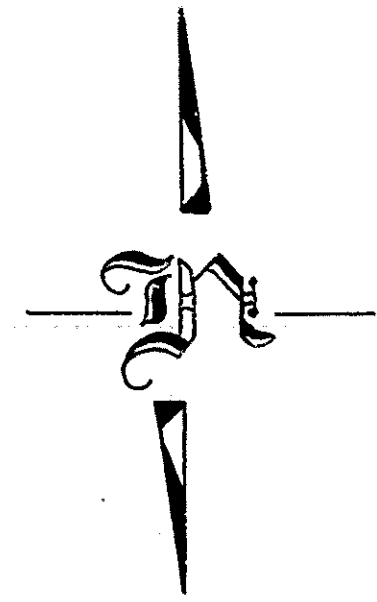
INSTITUTE FOR FISHERIES RESEARCH
 DIVISION OF FISHERIES MICHIGAN CONSERVATION DEPT.
 LAKE INVENTORY MAP

KILLDEER LAKE

AREA 8.4 ACRES
 MARGINAL SURVEY & SOUNDINGS BY
 LAKE AND STREAM IMPROVEMENT SECTION 2/7/63

IRON COUNTY

T. 46 N., R. 37 W., SEC. 29



B.M. NO. 1=100.0-SPIKE & WASHER
 IN BASE OF 6" W. PINE
 WATER SURFACE ELEV.= 98.2
 2/7/63

B.M. NO. 2=100.0-SPIKE & WASHER
 IN BASE OF 6" W. PINE
 WATER SURFACE ELEV.= 98.0
 2/7/63



LEGEND

BOTTOM

Organic

OUTLINE & CONTOURS

Encroaching Shore

5'-Contours

SHORE FEATURES

Steep Slope

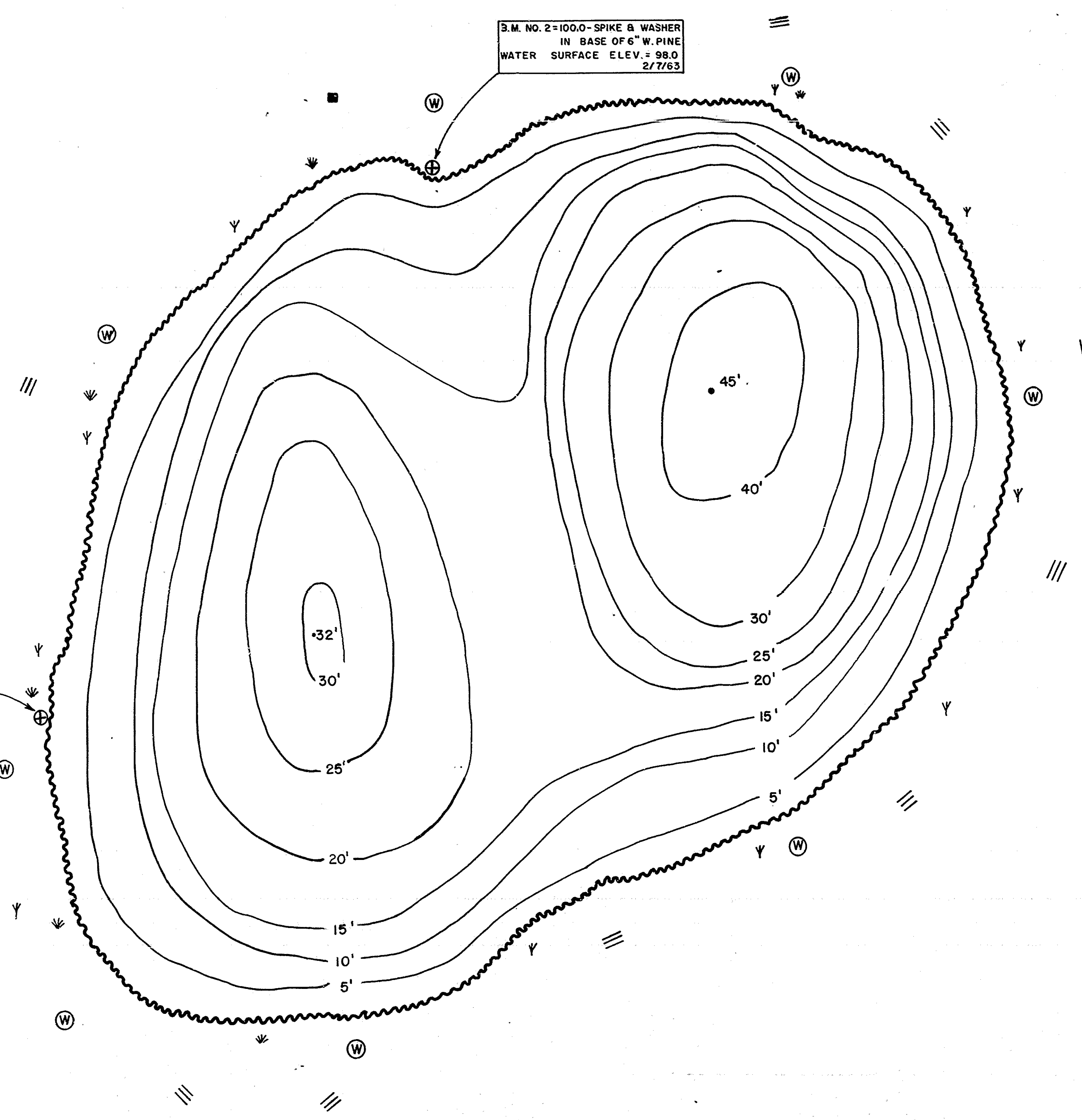
Wooded

Brush

Marsh

Building

Unimproved Road



J.B.B.