

LEGEND

- BOTTOM**
- Sand
 - Sand and pulpy peat
 - Sand and fibrous peat
 - Fibrous peat
 - Fibrous peat and pulpy peat

- Gravel
- Snags or deadheads
- Trash

OUTLINE & CONTOURS

- Shoreline
- Contours

SHORE FEATURES

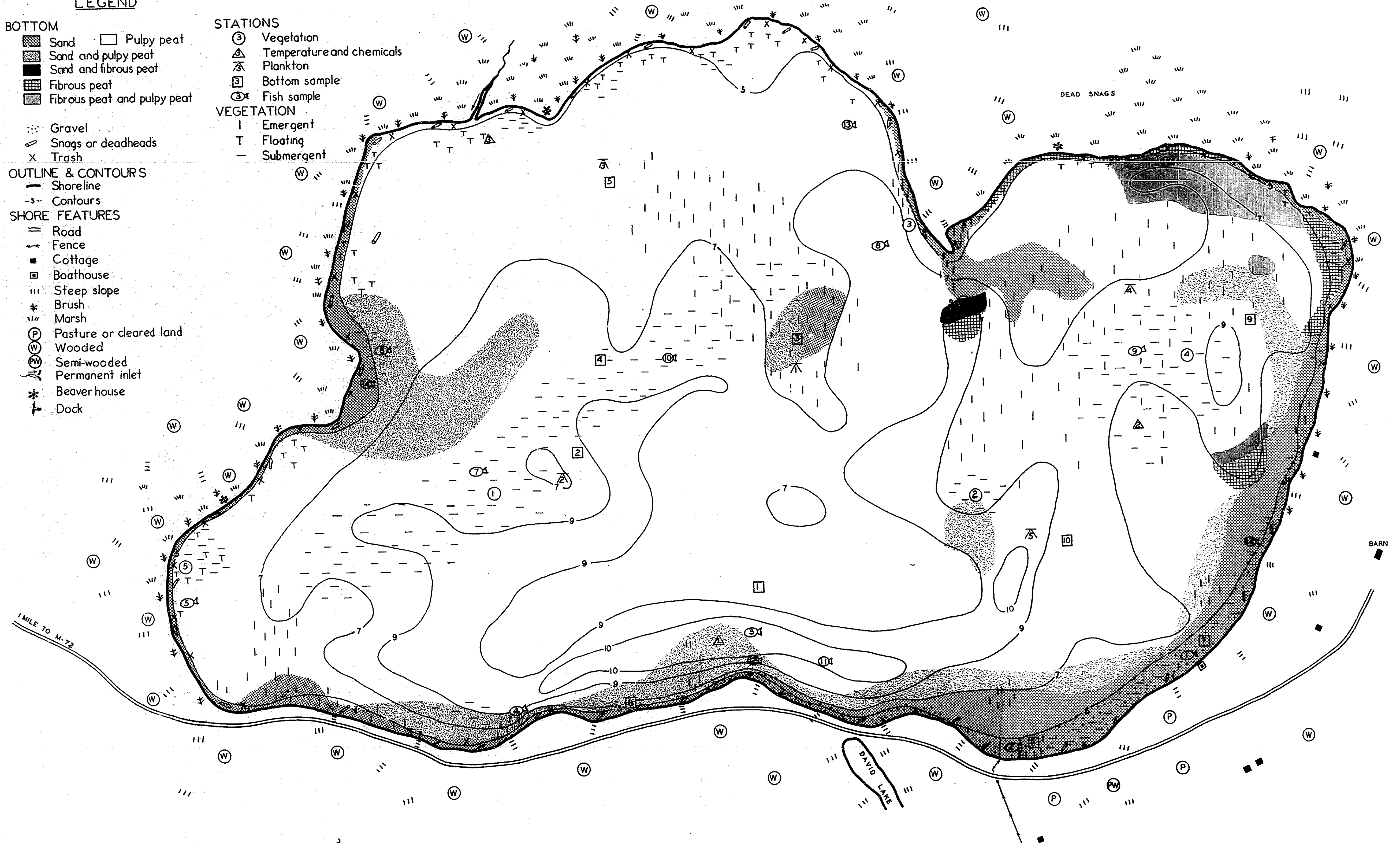
- Road
- Fence
- Cottage
- Boathouse
- Steep slope
- Brush
- Marsh
- Pasture or cleared land
- Wooded
- Semi-wooded
- Permanent inlet
- Beaver house
- Dock

STATIONS

- Vegetation
- Temperature and chemicals
- Plankton
- Bottom sample
- Fish sample

VEGETATION

- Emergent
- Floating
- Submergent



INSTITUTE FOR FISHERIES RESEARCH
 DIVISION OF FISHERIES MICHIGAN CONSERVATION DEPT.
 LAKE INVENTORY MAP
SHAMROCK LAKE
 AREA 220 ACRES
 MARGINAL SURVEY & SOUNDINGS 3-29-40.
 OSCODA COUNTY 8-29/9-5-40. T.27N, R.4E., SEC. 10, 11, 15.

