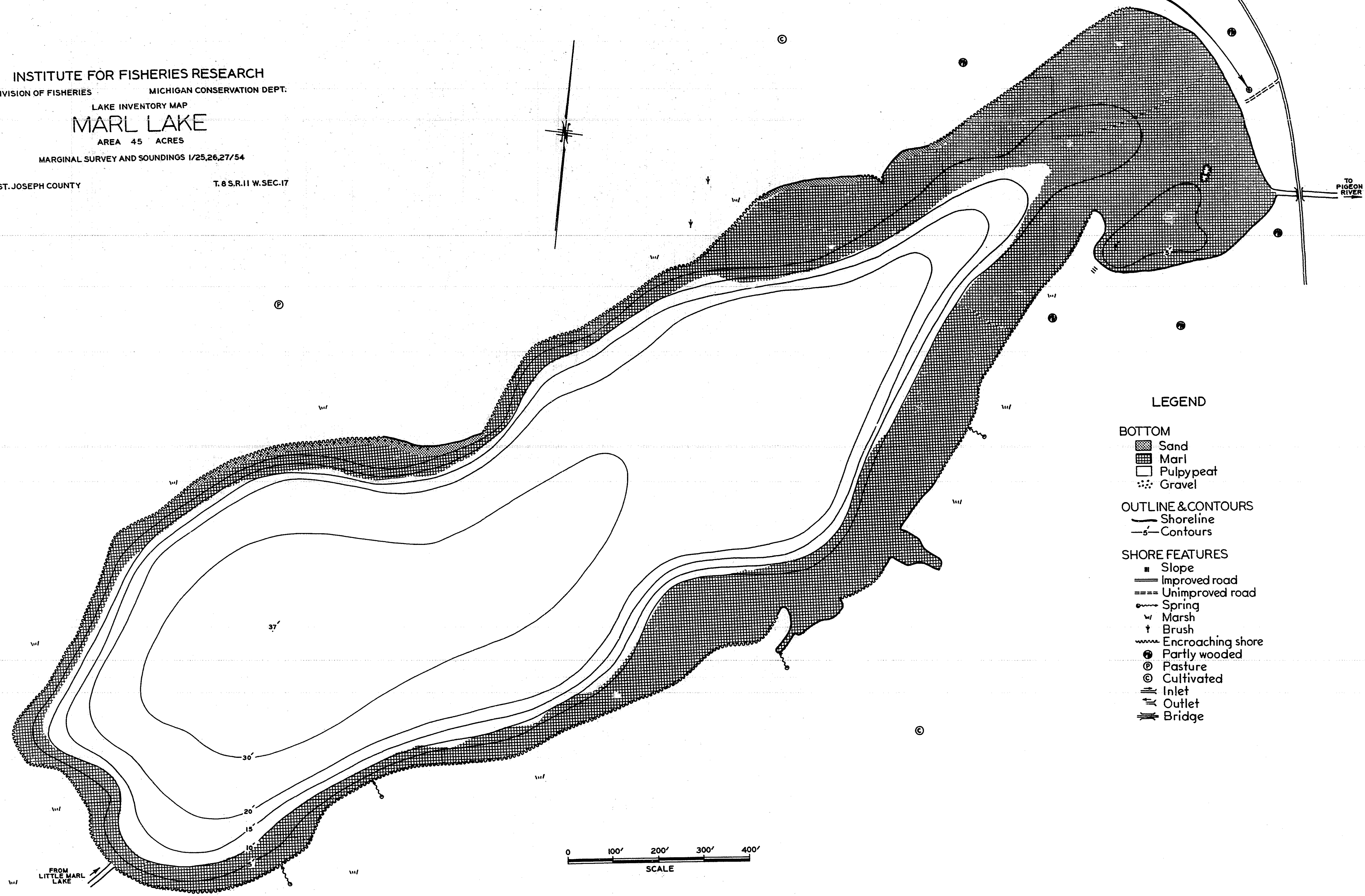


INSTITUTE FOR FISHERIES RESEARCH
 DIVISION OF FISHERIES MICHIGAN CONSERVATION DEPT.
 LAKE INVENTORY MAP
MARL LAKE
 AREA 45 ACRES
 MARGINAL SURVEY AND SOUNDINGS 1/25,26,27/54
 ST. JOSEPH COUNTY T. 8 S. R. 11 W. SEC. 17

B.M. 100.0 - R.R. SPIKE BASE OF
 12" ELM. TREE.
 WATER SURFACE ELEV. 197.6
 1/27/54



- LEGEND**
- BOTTOM**
- Sand
 - ▨ Marl
 - Pulpypeat
 - ⋯ Gravel
- OUTLINE & CONTOURS**
- Shoreline
 - s- Contours
- SHORE FEATURES**
- Slope
 - Improved road
 - - - Unimproved road
 - Spring
 - ∩ Marsh
 - † Brush
 - ⋯ Encroaching shore
 - Partly wooded
 - ⊙ Pasture
 - ⊙ Cultivated
 - ≡ Inlet
 - ≡ Outlet
 - ≡ Bridge

