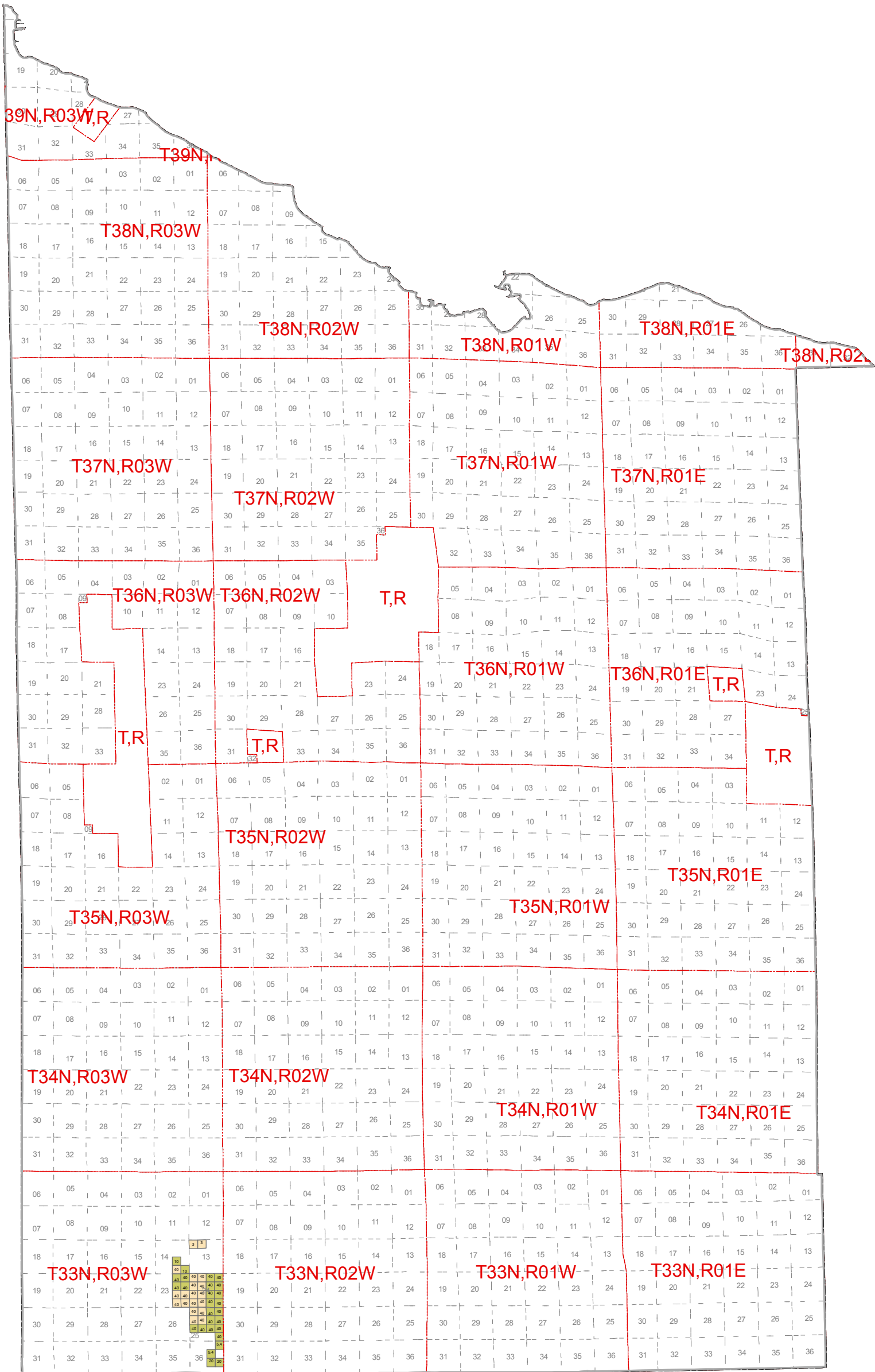




# May 2010 Mineral Lease Auction Cheboygan County



### Legend

- |  |                                   |
|--|-----------------------------------|
| Antares Exploration Fund Limited Partnership | Mason Dixon Energy LLC,           |
| Atlas Gas & Oil Company, LLC                 | Meridian Energy Corporation       |
| BreitBurn Operating Limited Partnership      | O.I.L. Niagaran L.L.C.            |
| Coughlin Land Services, LLC                  | Pine Energy, LLC                  |
| DTE Gas Storage Company                      | Robert J. Mannes                  |
| Dennis R. Schmude, d/b/a Schmude Oil         | Sasquatch Exploration LLC         |
| Energy West Corporation                      | Savoy Energy, L.P.                |
| Exterra Resources, LLC                       | Trendwell Energy Corporation      |
| Great Lakes Resources, LLC                   | Wolverine Gas and Oil Corporation |
| Jordan Development Company, L.L.C.           | Counties                          |



= Lease Acres

Note: Some Leased blocks may contain more than one lessee. See Spreadsheet for more detailed information.