

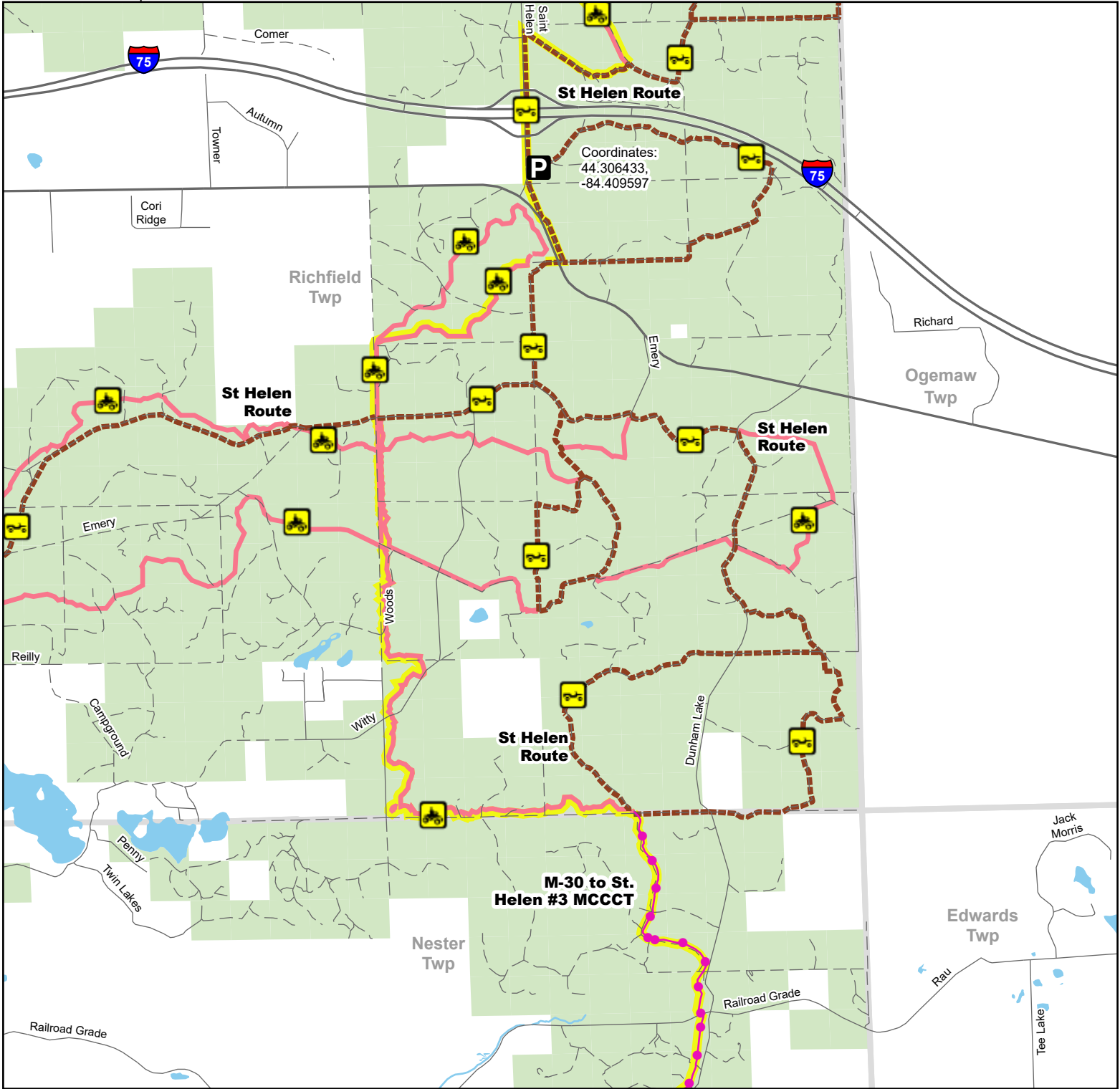


St Helen Trail & Route South

Roscommon County, Michigan

Description: ORV trail 37.4 miles. ORV route 42.6 miles.

Advisory: Trails and routes have two-way traffic.
Disclaimer: Trails shown on this map are an approximate representation of the trail system at the time of publication and may not reflect current ground conditions. Stay on signed trails only!



- P** Parking Lot
- ORV Route
- ORV Trail
- Motorcycle Trail – Motorcycles Only. ORV license and trail permit required.

- ORV Route – ORVs of all sizes including off-road motorcycles. ORV license and trail permit required unless licensed by the Secretary of State.
- ORV Trail – ORVs 50 inches in width or less including off-road motorcycles. ORV license and trail permit required.

- Michigan Cross Country Cycle Trail (MCCCT)
- Highway
- Paved road
- Gravel or dirt road
- Lake and River
- State Forest Land
- Township

