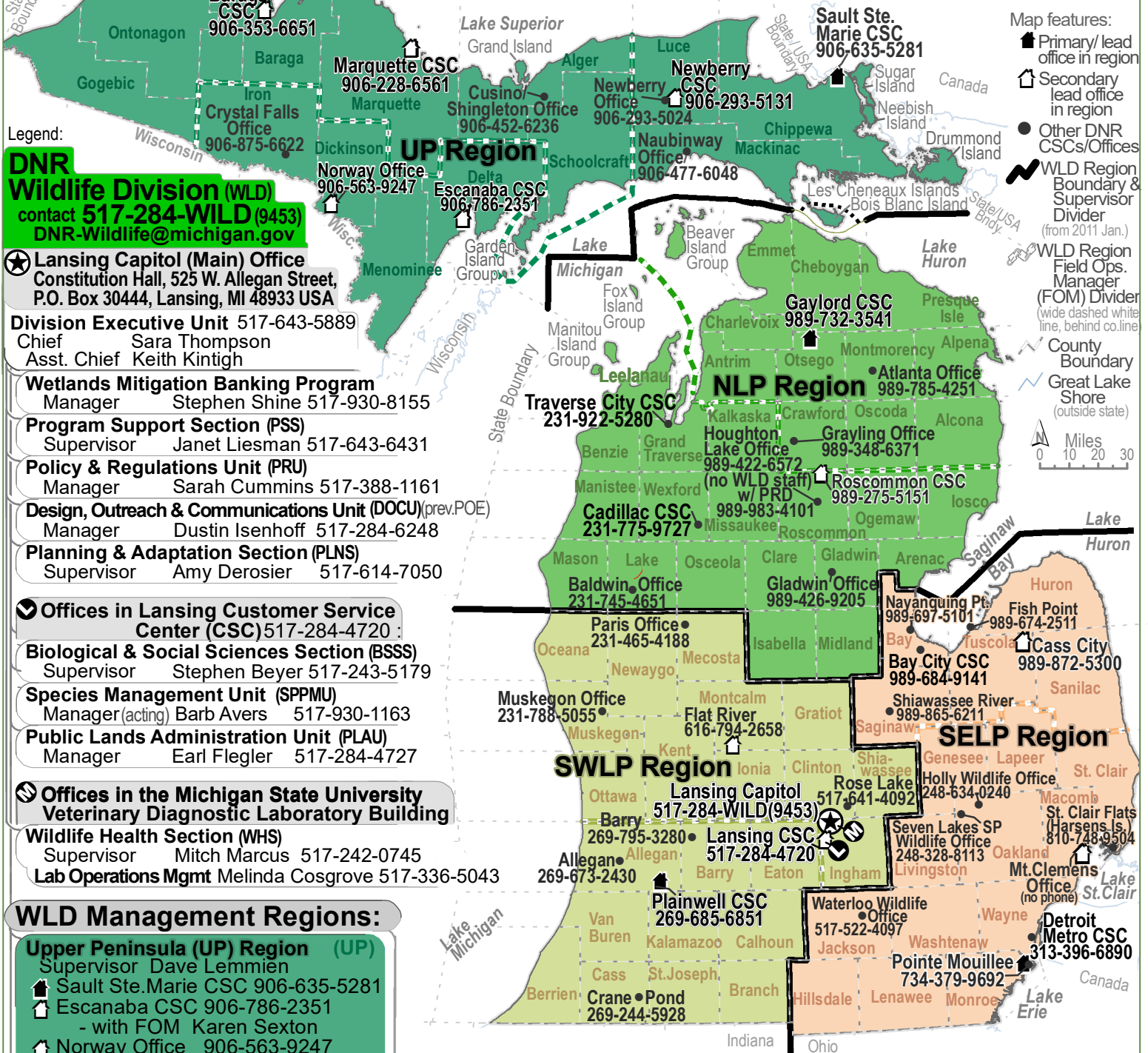




# DNR Wildlife Division Management Regions, Sections, Units, and Offices plus Supervisor Contacts

Revised 2024 January 03



**DNR Wildlife Division (WLD)**  
contact 517-284-WILD (9453)  
DNR-Wildlife@michigan.gov

**Lansing Capitol (Main) Office**  
Constitution Hall, 525 W. Allegan Street,  
P.O. Box 30444, Lansing, MI 48933 USA

**Division Executive Unit** 517-643-5889  
Chief Sara Thompson  
Asst. Chief Keith Kintigh

**Wetlands Mitigation Banking Program**  
Manager Stephen Shine 517-930-8155

**Program Support Section (PSS)**  
Supervisor Janet Liesman 517-643-6431

**Policy & Regulations Unit (PRU)**  
Manager Sarah Cummins 517-388-1161

**Design, Outreach & Communications Unit (DOCU)** (prev. POE)  
Manager Dustin Isenhoff 517-284-6248

**Planning & Adaptation Section (PLNS)**  
Supervisor Amy Derosier 517-614-7050

**Offices in Lansing Customer Service Center (CSC)** 517-284-4720

**Biological & Social Sciences Section (BSSS)**  
Supervisor Stephen Beyer 517-243-5179

**Species Management Unit (SPPMU)**  
Manager (acting) Barb Avers 517-930-1163

**Public Lands Administration Unit (PLAU)**  
Manager Earl Flegler 517-284-4727

**Offices in the Michigan State University Veterinary Diagnostic Laboratory Building**

**Wildlife Health Section (WHS)**  
Supervisor Mitch Marcus 517-242-0745  
**Lab Operations Mgmt** Melinda Cosgrove 517-336-5043

## WLD Management Regions:

**Upper Peninsula (UP) Region (UP)**  
Supervisor Dave Lemmien  
Sault Ste. Marie CSC 906-635-5281  
Escanaba CSC 906-786-2351  
- with FOM Karen Sexton  
Norway Office 906-563-9247  
- with FOM Bill Scullon

**Northern Lower Peninsula (LP) Region (NLP)**  
Supervisor Brian Mastenbrook (NLP)  
Gaylord CSC Office 989-732-3541  
- with FOM Scott Eggeman  
Roscommon CSC 989-275-5151  
- with FOM Mike Parker

**South-Western LP Region (SWLP)**  
Supervisor Mark Mills  
Plainwell CSC 269-685-6851  
- with FOM Kristin Wildman  
Flat River Office 616-794-2658  
- with FOM John Niewoonder  
Lansing CSC 517-284-4720

**South-Eastern LP Region (SELP)**  
Supervisor Joseph Robison  
Pointe Mouillee Office 734-379-9692  
Cass City Office 989-872-5300  
- with FOM Nate Levitte  
Mt. Clemens Office 586-465-4771  
- with FOM Terry McFadden

(Std. ref. map suitable for public use, in docs, presentations, etc.; All offices ver. map Revised 2024 January 03 by DNR-Wildlife Div./M.Strong)