

CRAWFORD COUNTY FACILITIES

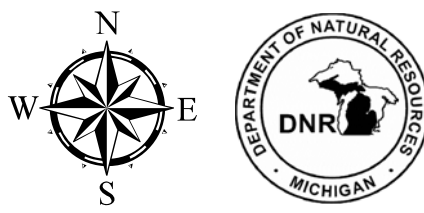
DNR/DEQ Facilities



Updated: 11/15/2011

Map Note:

Click the facility icons on the map to show Bing Map. Click on the listing below for the facilities web site.



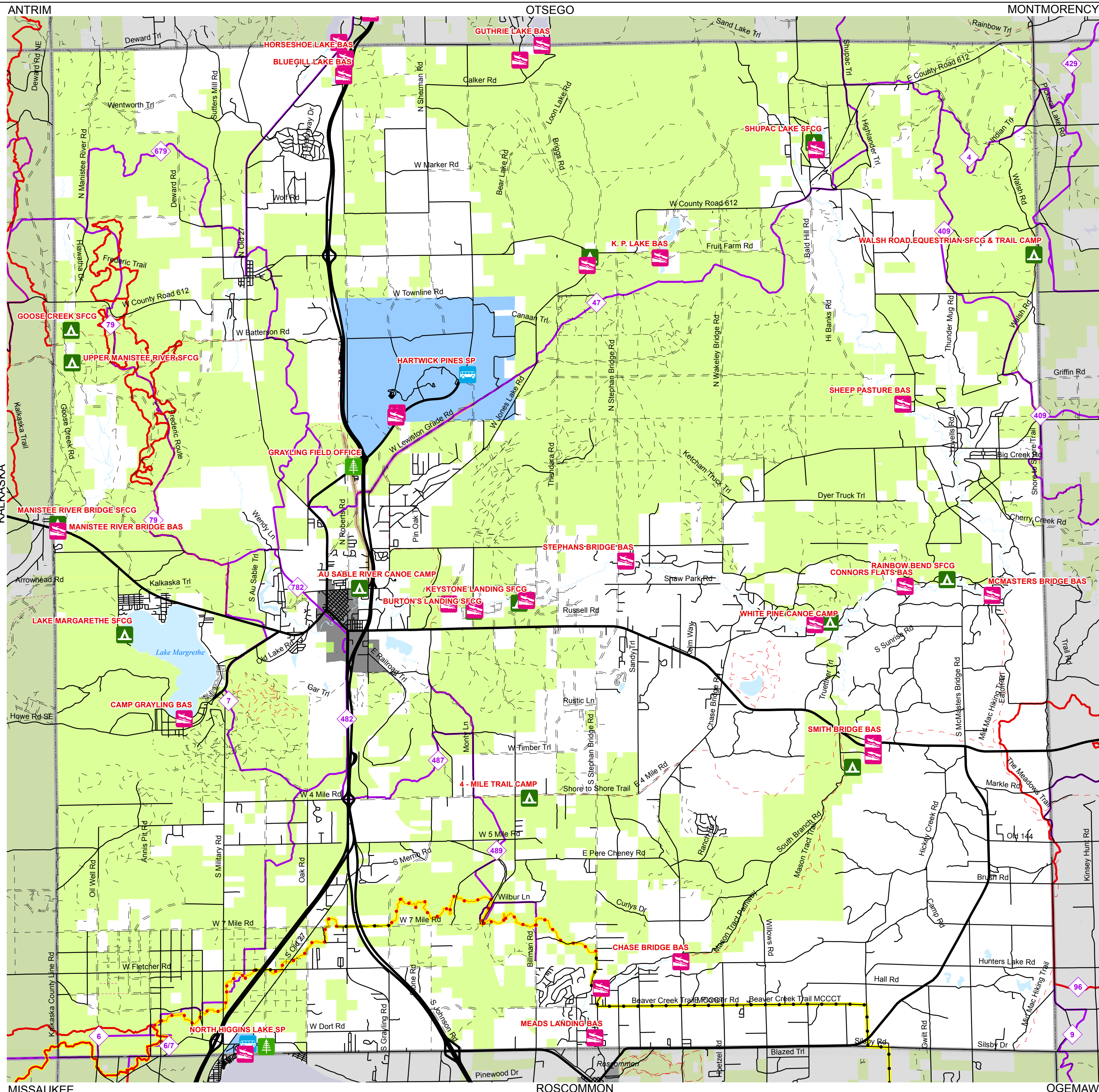
0 0.75 1.5 3
Miles

Prepared by: DNR/FMD/RAU

List of Facilities

- 4 - MILE TRAIL CAMP
- AU SABLE RIVER CANOE CAMP
- AU SABLE RIVER CANOE CAMP BAS
- BLUEGILL LAKE BAS
- BURTON'S LANDING SFCG
- BURTON'S LANDING SFCG BAS
- CAMP GRAYLING BAS
- CANOE HARBOR SFCG
- CANOE HARBOR SFCG BAS
- CCC MUSEUM
- CHASE BRIDGE BAS
- CONNORS FLATS BAS
- GOOSE CREEK SFCG
- GRAYLING FIELD OFFICE
- GUTHRIE LAKE BAS
- HARTWICK PINES LOGGING MUSEUM
- HARTWICK PINES SP
- HARTWICK PINES SP BAS
- HORSESHOE LAKE BAS
- JONES LAKE SFCG
- JONES LAKE SFCG BAS
- K. P. LAKE BAS
- KEYSTONE LANDING SFCG
- KEYSTONE LANDING SFCG BAS
- LAKE MARGARETHE SFCG
- MACMULLAN CONFERENCE CENTER
- MANISTEE RIVER BRIDGE BAS
- MANISTEE RIVER BRIDGE SFCG
- MCMASTERS BRIDGE BAS
- MEADS LANDING BAS
- MICHIGAN FOREST VISITOR CENTER
- NORTH HIGGINS LAKE SP
- NORTH HIGGINS LAKE SP BAS
- RAINBOW BEND SFCG
- SECTION ONE LAKE BAS
- SHEEP PASTURE BAS
- SHUPAC LAKE SFCG
- SHUPAC LAKE SFCG BAS
- SMITH BRIDGE BAS
- STECKERT BRIDGE BAS
- STEPHANS BRIDGE BAS
- UPPER MANISTEE RIVER SFCG
- WALSH ROAD EQUESTRIAN SFCG
- WHITE PINE CANOE CAMP
- WHITE PINE CANOE CAMP BAS

- DNR Designated Trails
- ATV Trail
- MCCCT Trails
- Motorcycle-DNR Sticker
- Motorcycle-Secretary of State License
- Non-Motorized Trails
- ORV Route
- Rail to Trails
- Snowmobile Trail



Map labels include: ANTRIM, OTSEGO, MONTMORENCY, KALKASKA, OSCODA, MISSAUKEE, ROSCOMMON, OGEMAW. Road numbers include 679, 79, 47, 409, 429, 782, 482, 487, 489, 617, 6, 96, 9.