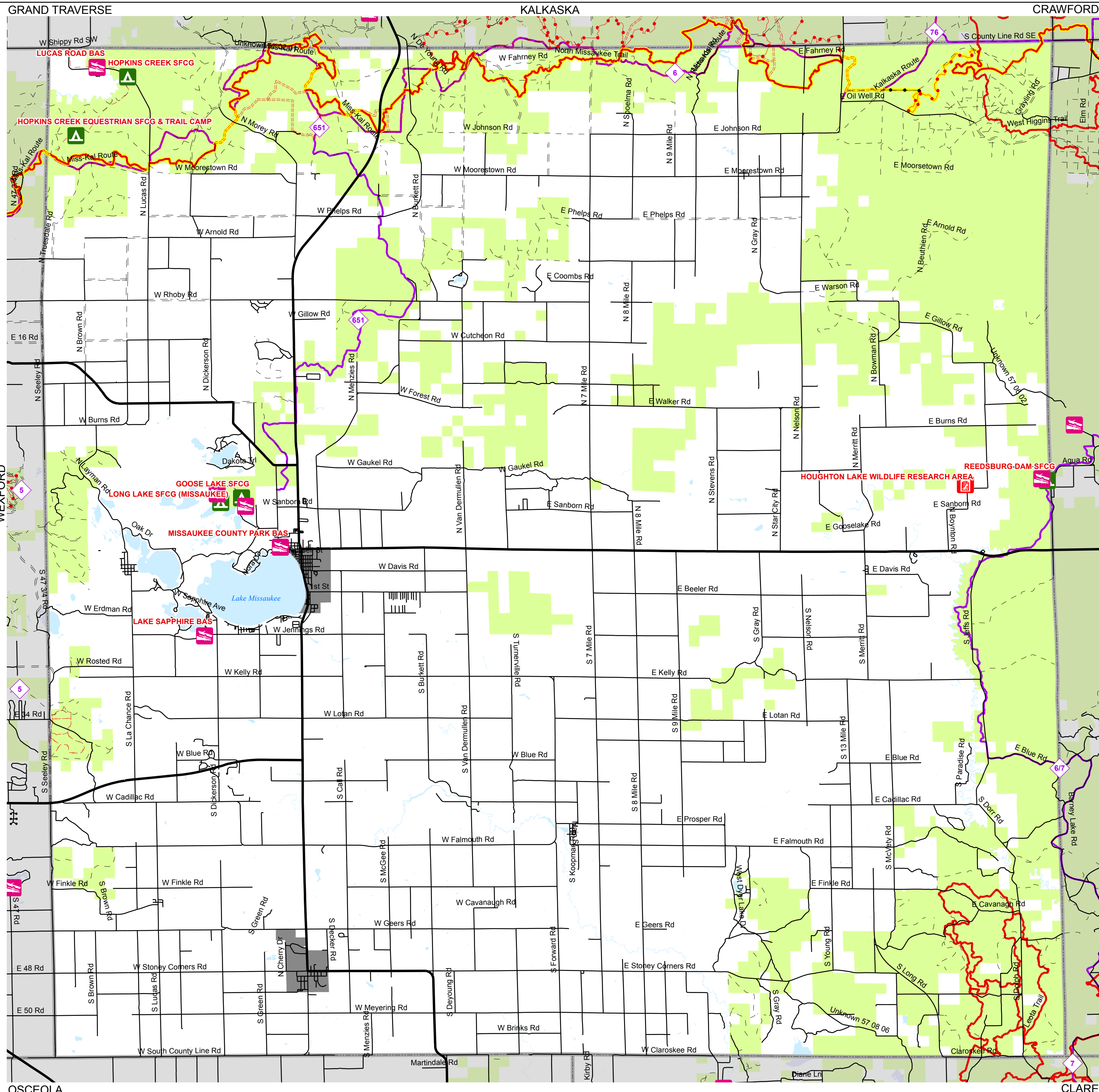


# MISSAUKEE COUNTY FACILITIES



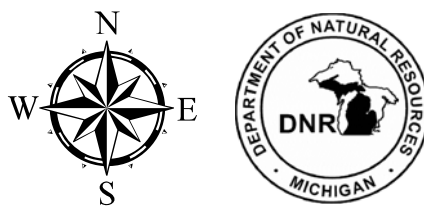
## DNR/DEQ Facilities

- AIR QUALITY OFFICE
- BOAT ACCESS SITE
- ERMD OFFICE
- FISHERIES OFFICE
- FMD OFFICE
- HARBOR
- HISTORIC SITE
- LAW ENFORCEMENT OFFICE
- LOCK
- MUSEUM
- PARK OFFICE
- REMEDIATION OFFICE
- SCENIC SITE
- STATE FOREST CAMPGROUND
- STATE GAME AREA
- STATE PARK
- WATER RESOURCE OFFICE
- WILDLIFE OFFICE
- VISITOR CENTER
- STATE FOREST
- STATE PARK
- STATE GAME AREA



Updated: 11/16/2011

**Map Note:**  
Click the facility icons on the map to show Bing Map. Click on the listing below for the facilities web site.



0 0.75 1.5 3  
Miles  
Prepared by: DNR/FMD/RAU

## List of Facilities

- GOOSE LAKE SFCG
- GOOSE LAKE SFCG BAS
- HOPKINS CREEK EQUESTRIAN SFCG & TRAIL CAMP
- HOPKINS CREEK SFCG
- HOUGHTON LAKE WILDLIFE RESEARCH AREA
- LAKE SAPPHIRE BAS
- LONG LAKE SFCG (MISSAUKEE)
- LONG LAKE SFCG (MISSAUKEE) BAS
- LUCAS ROAD BAS
- MISSAUKEE COUNTY PARK BAS
- REEDSBURG DAM SFCG
- REEDSBURG DAM SFCG BAS

- ### DNR Designated Trails
- ATV Trail
  - MCCCT Trails
  - Motorcycle-DNR Sticker
  - Motorcycle-Secretary of State License
  - Non-Motorized Trails
  - ORV Route
  - Rail to Trails
  - Snowmobile Trail