

**Open for Public Hunting**  
**Hunting Access Program**



Hunt types and seasons may vary. Details available at the Farm Headquarters.  
[www.michigan.gov/hap](http://www.michigan.gov/hap)

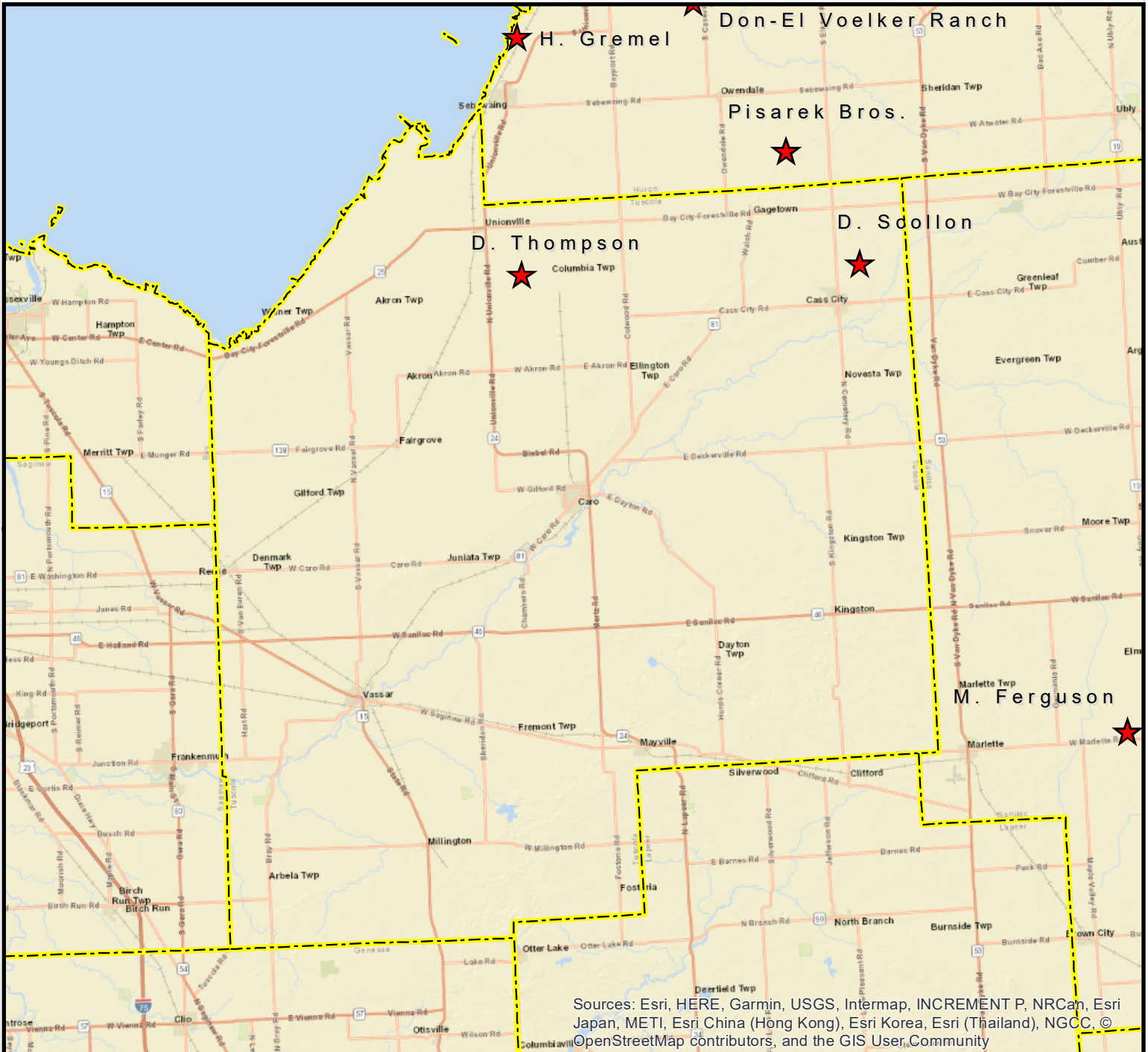


STATE OF MICHIGAN - DEPARTMENT OF NATURAL RESOURCES  
**HUNTING ACCESS PROGRAM (HAP)**



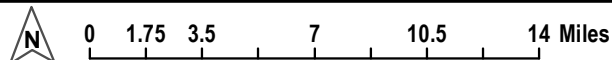
# Tuscola County HAP Cooperator Properties

Revised  
**09/30/2019**



Sources: Esri, HERE, Garmin, USGS, Intermap, INCREMENT P, NRCan, Esri Japan, METI, Esri China (Hong Kong), Esri Korea, Esri (Thailand), NGCC, © OpenStreetMap contributors, and the GIS User Community

**Legend:**  Property Boundary  
 Station &/or Parking Location  
 Backdrop is BING base data.



For more information on the Hunting Access Program (HAP), more maps, or details on other areas, visit the DNR website HAP section [www.michigan.gov/hap](http://www.michigan.gov/hap) or scan this QR-block (on the left) with your smartphone or similar device.

**HUNTER SAFETY ZONES of 150 yards or 450 feet are enforced at ALL TIMES around all buildings and structures.**  
**Be aware of all property boundaries; Do not trespass onto adjacent lands.**