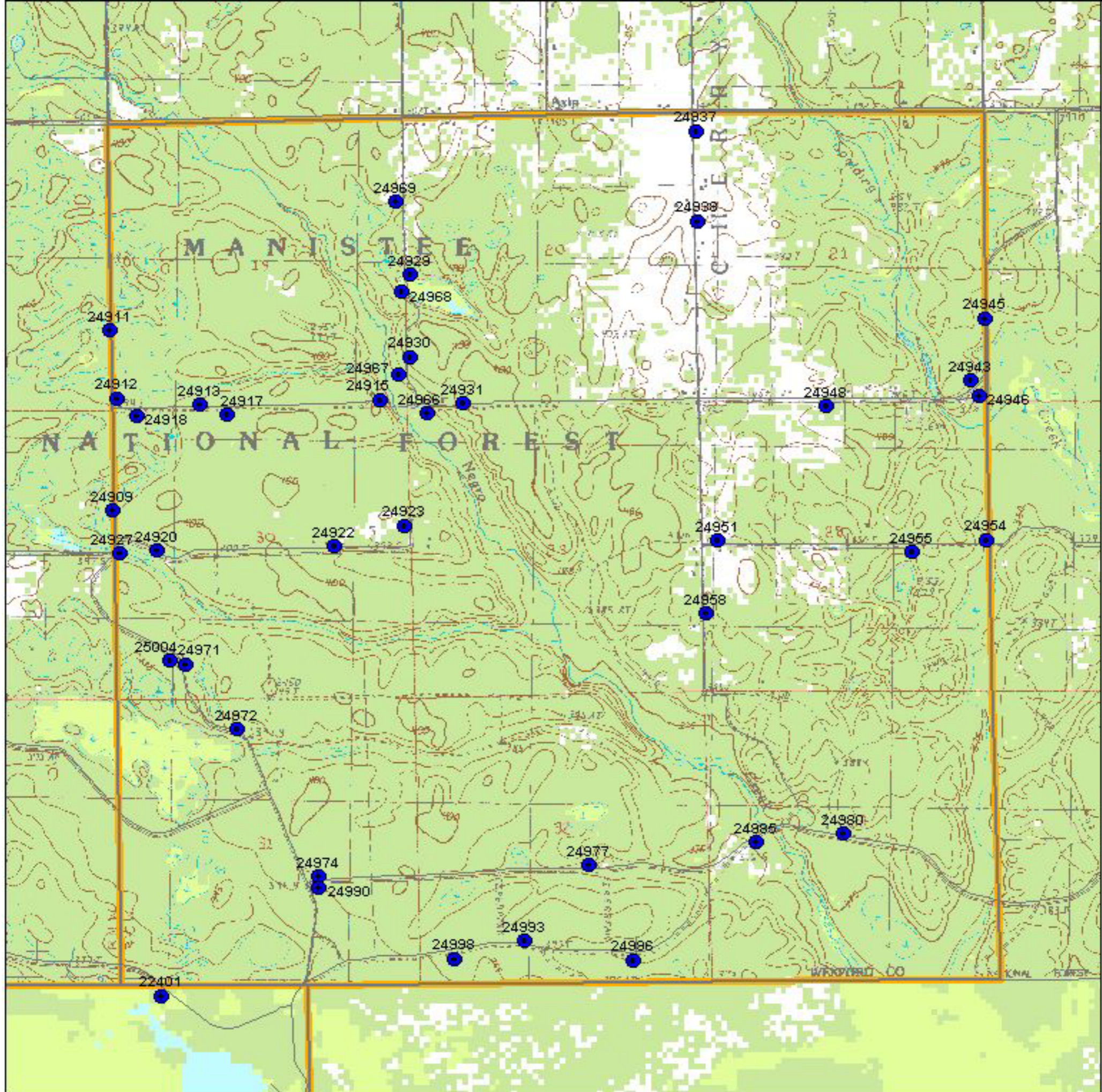


Wexford County T21N R10W Cherry Grove Township Block 3



LEGEND

- BBA Point Sampling Locations (each numbered)
 - Priority Block (1/4 twp)
 - Other Blocks
- USGS Topographic Information:
- Major and County Roads
 - Trails and Two-tracks
 - Topographic Lines
- Landuse / Landcover Backdrop
- City Blocks
 - Open Land, Residential, etc. incl. agriculture lands
 - Mixed/ Deciduous / Evergreen Forest
 - Woody Wetlands, Emergent / Herbaceous Wetlands
 - Open Water



0 0.1 0.2 0.3 0.4 0.5 Miles



0 0.2 0.4 0.6 Kilometers



(rev. 2005 may 18)