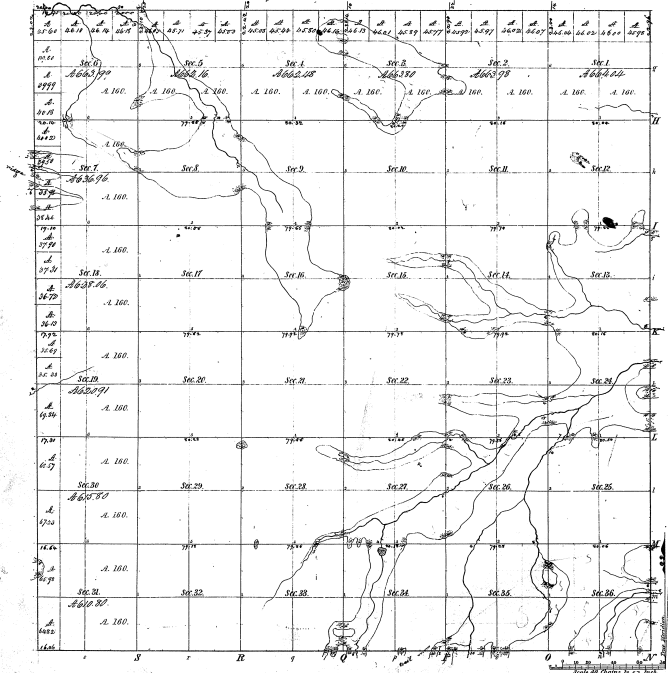


Section 21-06
 22-15

Township 1° 27' N Range 1° 6' East Mer.



Boundaries of			
Paul's Concess	W. 1/2	Paul's Concess	W. 1/2
22-15			
22-15			

Survey Designated	By Whom Surveyed	Date of Contract	Amount of Survey	When Surveyed	Place for and date of the first sale
Township 1° 27' N	John A. Blaine	Jan. 19, 1850	27 sq. 1260		
22-15	John A. Blaine	Feb. 25, 1850			

The above copy of Township 1° 27' N, Range 1° 6' East of the Principal Meridian, Michigan, is hereby confirmed to the full extent of the survey thereon filed in this office, which has been examined and approved.

Surveyor General's Office
 East Lansing, Aug. 18, 1880.

W. H. H. H. H.