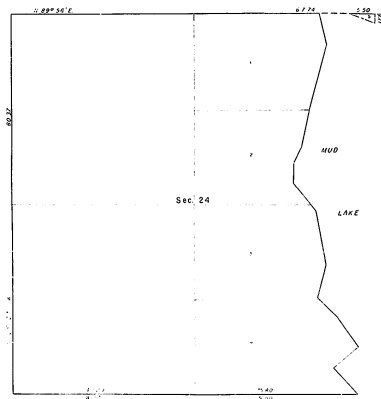




TOWNSHIP 45 NORTH, RANGE 21 WEST, OF THE MICHIGAN MERIDIAN, MICHIGAN.  
SUPPLEMENTAL PLAT OF SECTION 24

DUPLICATE ORIGINAL

33-2-P



UNITED STATES DEPARTMENT OF THE INTERIOR  
BUREAU OF LAND MANAGEMENT  
Alexandria, Virginia June 22, 1982

This plat, showing lot 2, sec. 24, T. 45 N., R. 21 W., Michigan Meridian, Michigan, is filed open: the plat approved June 20, 1982, and having been correctly prepared in accordance with the regulations of this Bureau, is hereby accepted.

For the Director

Chief Cadastral Surveyor  
Eastern States Office