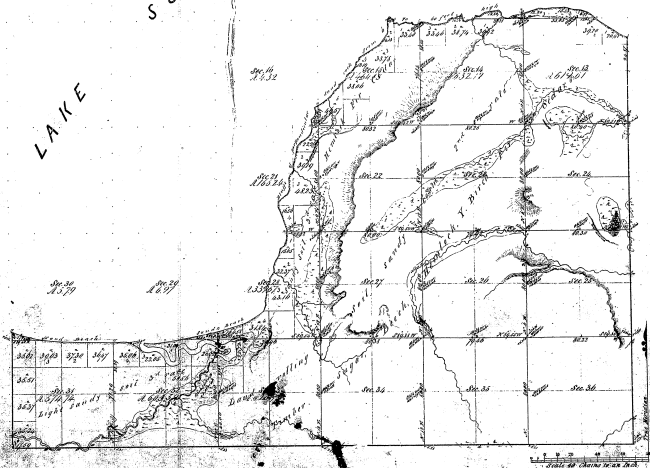


Survey  
Township N<sup>o</sup> 17 N. Range N<sup>o</sup> 20 W. Mer. Mich.

LAKE SUPERIOR



37-5

Shaded in		A1/4	1/2	3/4	A1/4	1/2	3/4
Per	Cont						
37-5							
Mention Made of Ch. 97th							

Total number of Acres 24,124

Survey	By Whom Surveyed	Date of Comm.	Number of Acres	When Surveyed	When Closed in
Original	John C. Smith	April 12, 1857	24,124	1857	1857
Original	John C. Smith	April 12, 1857	24,124	1857	1857
Original	John C. Smith	April 12, 1857	24,124	1857	1857

All above Map of Township N<sup>o</sup> 17 North Range N<sup>o</sup> 20 West of the Principal Meridian Michigan is hereby acknowledged to the full name of the original surveyor and approved by the Surveyor General of Michigan  
 John C. Smith  
 Surveyor General of Michigan