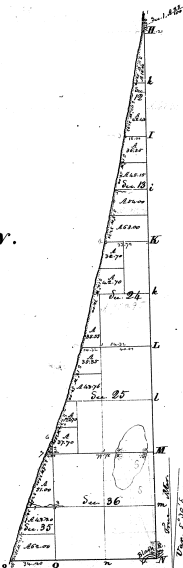


Township N. 1. North, Range N. XVII West Mer. (Misc. For.)

1-39

LAKE MICHIGAN.



Section	Area	Value	Notes
1	0.00	0.00	
2	0.00	0.00	
3	0.00	0.00	
4	0.00	0.00	
5	0.00	0.00	
6	0.00	0.00	
7	0.00	0.00	
8	0.00	0.00	
9	0.00	0.00	
10	0.00	0.00	
11	0.00	0.00	
12	0.00	0.00	
13	0.00	0.00	
14	0.00	0.00	
15	0.00	0.00	
16	0.00	0.00	
17	0.00	0.00	
18	0.00	0.00	
19	0.00	0.00	
20	0.00	0.00	
21	0.00	0.00	
22	0.00	0.00	
23	0.00	0.00	
24	0.00	0.00	
25	0.00	0.00	
26	0.00	0.00	
27	0.00	0.00	
28	0.00	0.00	
29	0.00	0.00	
30	0.00	0.00	
31	0.00	0.00	
32	0.00	0.00	
33	0.00	0.00	
34	0.00	0.00	
35	0.00	0.00	
36	0.00	0.00	
37	0.00	0.00	
38	0.00	0.00	
39	0.00	0.00	
40	0.00	0.00	

1-39

By whom surveyed	When surveyed	When patented	When patented	When patented
East Boundary	L. W. W.	12-10-1830	5-13-30	2-18-1831
South	A. Campbell	1-31-30	1-31-30	1-31-30
Subscribers	S. B. C. W.	25-10-1830	5-77-30	2-2-1832

The above plat of Township N. 1. North, Range N. 17 West of the Meridian, Michigan Ter. is strictly conformable to the file note of the survey thereof on file in this office, which have been examined and approved.
 Thompson & Co., Surveyors, C. M. T. Williams
 June 30th June 1832.