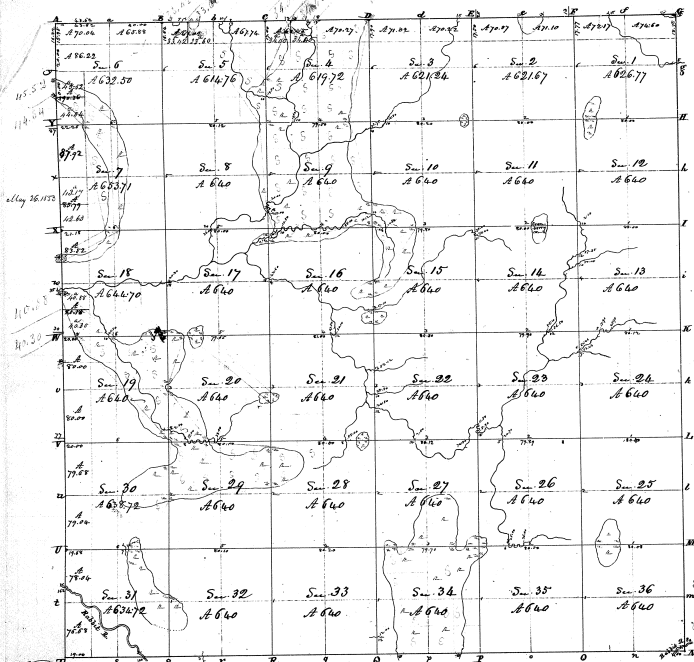


Township N. 17 North, Range N. 11 West (Mts. Par.)



Total Contents Acres 22,968.4

The above map of Township N. 17 North, of Range N. 11 West of the Meridian, in the County of Michigan, is strictly conformable to the Field Notes of the survey thereof, on file in the office, which have been examined and approved by the Sub-Commissioner, 5 miles, 75 cts. per Acre, amounting to 22,968.4 acres. The remaining out-landings, 17 miles, 17 cts. per Acre, amounting to 22,951.4 acres, are the subdivisions of the same tract, both of which are in town line, bearing 79° 00' 00" S. 8.000' (about base line) from the N. 17 North, in township N. 17 North, and 100° 00' 00" W. from the N. 17 North, in township N. 17 North, under contract dated 25. July 1830.

George Cassels (Agent) E
 Cincinnati, Dec. 18. 1831 E
 M. T. Williams
 Surveyor General

7-25

7-25