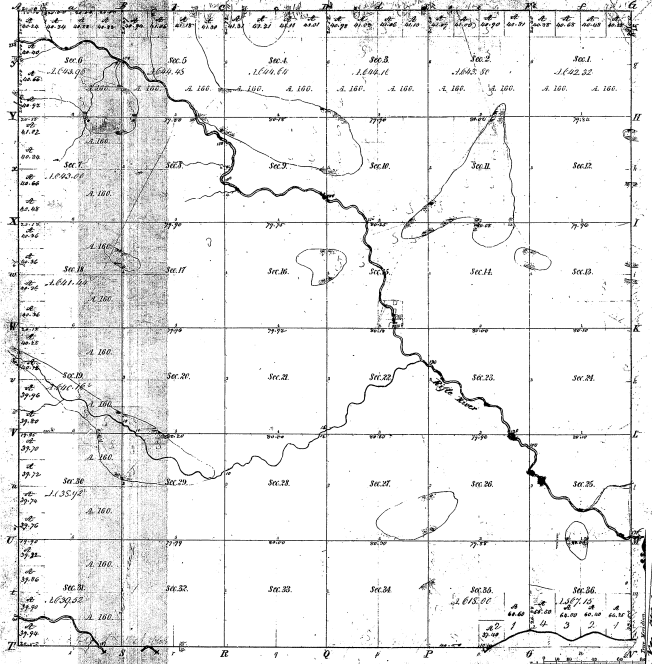


Re-Survey
Township N^o 29 N. Range N^o 5 East Mer. (Mich.)



Registers of Township Survey
 Part Course 18-18 Part Course 18-18

1	1106C	12.60
	1777F	15.50
	2005H	22.83
	1826W	10.52
	1827H	10.00
	1827W	10.00
2	2005H	22.83
3	2005H	22.83

32-12

32-12

Total number of Acres 22,077.55

Survey Straddled	Amount Straddled	Date of Contro'l	Amount of Survey	Plan Straddled	Plan for use of
Township	0.00	1872	0.00	1872	1872
Subdivisions	0.00	1872	0.00	1872	1872

This Survey of Township N^o 29 North of Range N^o 5 East of the Meridian Michigan was made and approved by the Surveyor General of Michigan on the 11th day of August 1872.
William Johnston
 Surveyor General