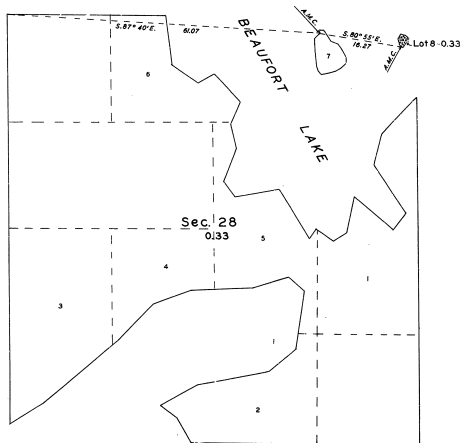


TOWNSHIP N° 48 NORTH, RANGE N° 31 WEST, OF THE MICHIGAN MERIDIAN, MICHIGAN.

PLAT OF AN ISLAND IN BEAUFORT LAKE IN SECTION 28.

45-10

45-10



MEMORANDUM

THIS PLAT REPRESENTS THE SURVEY OF AN ISLAND IN BEAUFORT LAKE, WHICH WAS NOT SHOWN UPON THE TOWNSHIP PLAT APPROVED MARCH 8, 1849. THE SURVEY WAS EXECUTED PURSUANT TO AUTHORITY CONTAINED IN GENERAL LAND OFFICE LETTER 138923 *P*, DATED NOVEMBER 26, 1930, WHICH BEARS DEPARTMENTAL APPROVAL DATED NOVEMBER 29, 1930.

OFFICE OF THE SUPERVISOR OF SURVEYS

DENVER, COLORADO, JANUARY 5, 1932.

THE ABOVE PLAT OF AN ISLAND IN BEAUFORT LAKE IN SECTION 28, TOWNSHIP NO. 48 NORTH, RANGE NO. 31 WEST, MICHIGAN MERIDIAN, IN THE STATE OF MICHIGAN, IS STRICTLY CONFORMABLE TO THE FIELD NOTES OF THE SURVEY THEREOF, WHICH HAVE BEEN EXAMINED AND APPROVED.

Wm. H. Pomeroy
 W. H. Pomeroy
 U. S. SUPERVISOR OF SURVEYS.

DEPARTMENT OF THE INTERIOR

GENERAL LAND OFFICE

WASHINGTON, D. C., JANUARY 13, 1932.

THE SURVEY REPRESENTED BY THIS PLAT, HAVING BEEN CORRECTLY EXECUTED IN ACCORDANCE WITH THE REQUIREMENTS OF LAW AND THE REGULATIONS OF THIS OFFICE, IS HEREBY ACCEPTED.

Wm. C. Stallard
 Wm. C. Stallard
 ASSISTANT COMMISSIONER.

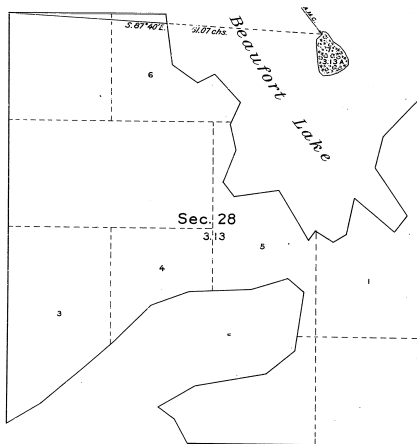
SCALE: 10 CHAINS TO AN INCH.

AREA SURVEYED, 0.33 ACRES.

LINES DESIGNATED	BY WHOM SURVEYED	GROUP		MILWAUKEE		WHEN SURVEYED	
		NO.	DATE	W.S.	C.S.	BEGUN	COMPLETED
MEANDERS	JOS. C. THOMA.	26	JUNE 10,	0	7.62	JULY 27,	JULY 27,
CONNECTION	U. S. C. ENGINEERS.		1931.	0	16.47	1931.	1931.

PLAT of an ISLAND in Beaufort Lake, Sec. 28, T. 48 N., R. 31 W., Mich. Mer., Michigan.

45-10
45-10



LEGEND.

Scale: 1 inch = 10 chains.

Surveyed by Earl G. Harrington, U.S. Cadastral Engineer, from October 24 to 26, 1924, in accordance with special instructions for Group No. 5, Michigan, dated August 10, 1924, issued by the Supervisor of Surveys, which were approved by the Commissioner of the General Land Office on September 21, 1924.

Area of lands surveyed = 3.13 acres.
Areas of previously surveyed lands not shown.

The undersigned hereby certifies that the survey delineated upon this plat has been executed under his general direction and in accordance with the approved special instructions issued pursuant to authority contained in office letter 1135699 "R" 218, dated August 15, 1924, and that the field notes and plat of the survey have been carefully verified.

Denver, Colorado.
April 27, 1925.

William J. Gray
Supervisor of Surveys.

Department of the Interior.
General Land Office.

Washington, D. C., May 21, 1925.

The above plat of an island in Beaufort Lake, in Section 28, Township 48 North, Range 31 West, of the Michigan Meridian, in the State of Michigan, is strictly conformable to the field notes of the survey thereof, on file in this office, which have been examined and approved.

William J. Gray
Commissioner and ex officio
U. S. Surveyor General for Michigan.