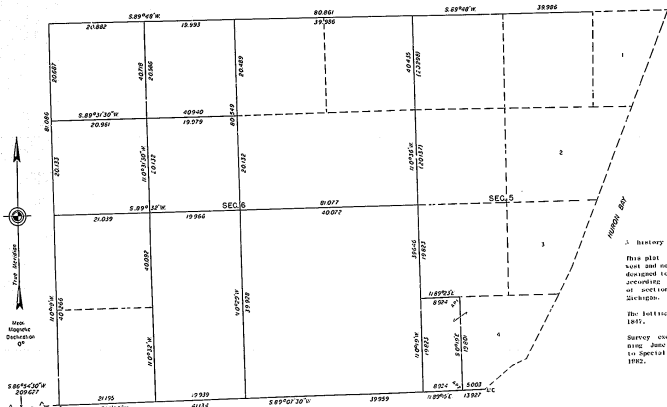


TOWNSHIP 51 NORTH, RANGE 31 WEST, OF THE MICHIGAN MERIDIAN, MICHIGAN.

DEPENDENT RESURVEY AND SUBDIVISION



A history of survey is contained in the field note record.

This plat represents the dependent resurvey of a portion of the east and north boundaries, a portion of the subdivision lines, devised to restore the corners to their true original locations according to the best available evidence, and the subdivisions according to sections 5 and 6, T. 51 N., R. 31 W., 2nd 1/2 Sec. Township, Michigan.

The letters and areas are so shown on the plat approved June 4, 1922.

Survey executed by Michael J. Avery, Cadastral Surveyor, beginning June 21, 1922, and completed September 16, 1922, pursuant to Special Instructions for Group No. 8, Michigan, dated June 8, 1922.

UNITED STATES DEPARTMENT OF THE INTERIOR
BUREAU OF LAND MANAGEMENT
Alexandria, Virginia September 25, 1923

This plat is strictly conformable to the approved field notes, and the survey, having been correctly executed in accordance with the requirements of law and the regulations of this Bureau, is hereby accepted.

For the Director

Michael J. Avery

Chief Cadastral Surveyor
Eastern States Office