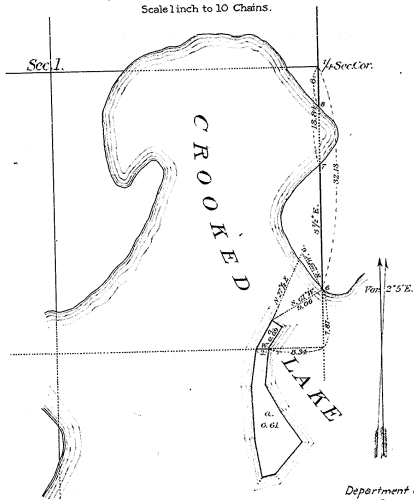


Original.

DIAGRAM
OF AN
ISLAND
IN
CROOKED LAKE.
SECS 1 & 12, T19N, R10W,
MICHIGAN.
1890
Scale 1 inch to 10 Chains.

54178

7-38



P.B. [Signature]

Department of the Interior
General Land Office
May 16, 1890.

The above diagram of an ISLAND in Crooked Lake Secs 1 & 12, T19N, R10W, Michigan, is a correct plot of survey executed by Lee S. Cobb U.S. Deputy Surveyor, in pursuance of instructions from the Commissioner of the General Land Office bearing date the 22^d day of March 1890 and is strictly conformable to the field notes of the survey thereof which have been examined and approved.

Sec. 12.

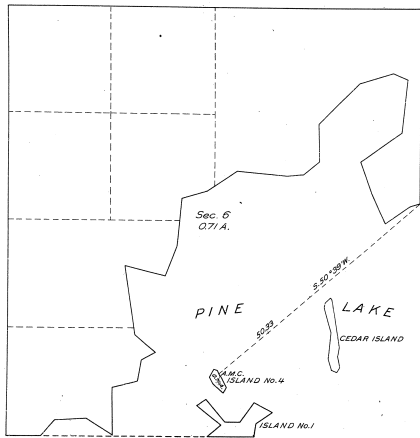
Samuel S. Edgoff.
Commissioner and
Ex Officio Surveyor General
for Michigan.

PLAT of ISLAND No. 4
 in
 PINE LAKE.
 in
 Section 6, T 1 N., R. 10 W., Mich., Mer.
 MICHIGAN.

Accepted July 25, 1917
 G.L.O.

7-38.

② 3E-1



LEGEND

Scale: 10 chains to an inch.
 Surveyed by Francis W. Dubois, U.S. Surveyor, on July 2, and 2, 1895, under special instructions dated May 7, 1895, issued by the Commissioner of the General Land Office.
 Areas of lands surveyed in 1871 acres, not shown upon the plats approved April 26, 1897, April 10, 1896, May 4, 1878 and December 21, 1906.
 Areas of previously surveyed lands not shown.

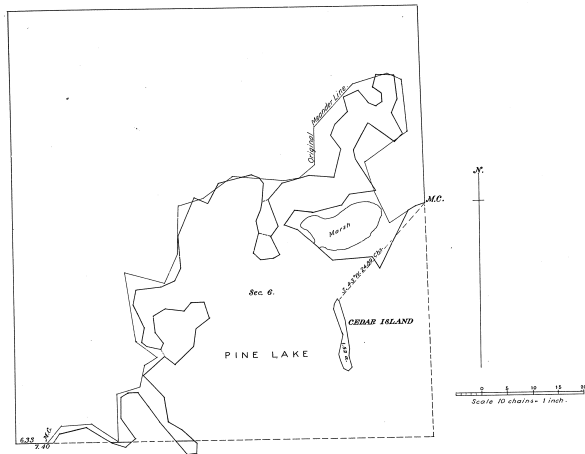
DEPARTMENT OF THE INTERIOR
 GENERAL LAND OFFICE
 Washington, D.C., July 25, 1917
 The above plat of Island No. 4 in Pine Lake, T 1 N., R 10 W., Michigan Meridian, Michigan, is strictly conformable to the field notes of the survey thereon, on file in this office, which have been examined and approved.

[Signature]
 Commissioner and ex officio
 U.S. Surveyor General for Michigan.

PLAT OF CEDAR ISLAND
in Sec. 6, T. 1 N., R. 10 W., Mich., Michigan,
(in Pine Lake)

MICHIGAN

Surveyed by Walter Heath, U. S. Dep. Surveyor, August 5th, 1906,
under special instructions from the Com^r of the Gen^l Land Office, dated April 2nd, 1906.



DEPARTMENT OF THE INTERIOR,
General Land Office
Washington, D.C., December 21st, 1906.

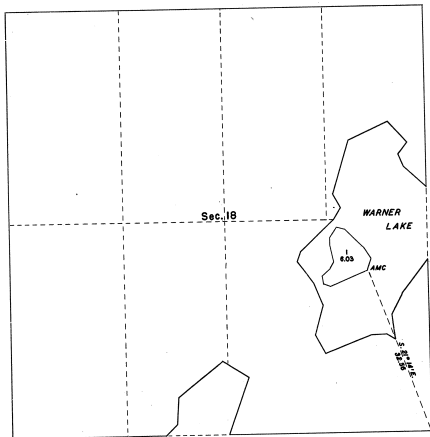
The above plat of Cedar Island, in Pine Lake, in Sec. 6, T. 1 N., R. 10 W., Mich. Meridian, Michigan, is a correct plat of a survey executed by Walter Heath, U. S. Dep. Surveyor, in pursuance of special instructions from the Commissioner of the General Land Office, bearing date April 2nd, 1906, and is strictly conformable to the field notes thereof, on file in this office, which have been examined and approved.

W. B. Lock
Commissioner and ex-officio
Survey General for Michigan.

7-38 (7)

TOWNSHIP 1 NORTH, RANGE 10 WEST, MICHIGAN MERIDIAN, MICHIGAN
SURVEY OF ISLAND IN SECTION 18

7-38⁶³



This plat represents the survey of an island in Warner Lake which was not included in the original survey of T. 1 N., R. 10 W., as represented upon the plat approved April 24, 1927.

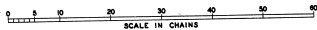
Surveyed by Horville E. Shearer, Cartographer (Cadastral), on September 5, 1958, under Special Instructions for Group 67, Michigan, dated August 5, 1958.

UNITED STATES DEPARTMENT OF THE INTERIOR
BUREAU OF LAND MANAGEMENT
Washington, D. C. January 26, 1959

This plat is strictly conformable to the approved field notes, and the survey, having been correctly executed in accordance with the requirements of law and the regulations of this Bureau is hereby accepted.

For the Director

Earl S. Harrington
Cadastral Engineering Staff Officer



Area Surveyed: 6.03 Acres

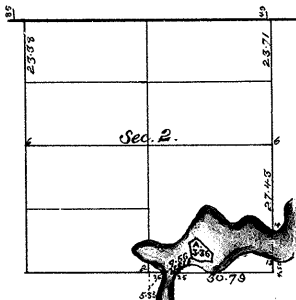
Original

DIAGRAM of ISLAND

IN
Section 2. T. 1 N. R. 10 W. MICH.

7-38

7-389



Department of the Interior,
General Land Office,
April 10, 1877.

I hereby certify that the above plat of an island in
Sec. 2. T. 1 N. R. 10 W. Michigan is a correct plat of sur-
vey executed by John S. Cressy, U. S. D. S. under a contract on-
ward into with the Commissioner of the General Land Office,
bearing date the 20th day of January 1877, in accordance
with Sec. 2219 U. S. Revised Statutes, is legally conformable
to the field notes of the survey thereof, which have been exam-
ined and approved.

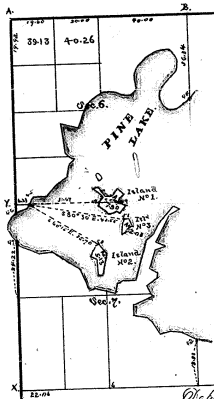
J. McManis
Commissioner
U. S. Office Surv. Genl. of Mich.

14 3 70 B.

7-38
 ⑨
 7-38

Original

DIAGRAM OF ISLANDS
 IN
 Sections 6 & 7, T. 1 N. R. 10 W. of the Mich. Meridian.



Partitions of the sections
 of record Book Office
 April 18, 1846.

The above diagram of islands in sections 6 & 7, in town
 ship 6 North, Range 10 West of the meridian in the State of
 Michigan is a correct part of surveyor's records of John
 D. Cresson in pursuance of a contract entered into with
 the Commissioners of the General Land Office bearing date
 the 7th day of May, 1836 and is otherwise conformable
 to the public notice of the survey thereof which have been
 published and approved.

J. J. Barton
 Acting Commissioner
 of the General Land Office
 of Michigan.

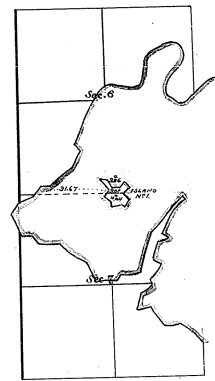
State Land Office

7-38

7-38

DIAGRAM

OF ISLAND No. 1 IN SEC^s 6 & 7 T^p. 1N., R. 10W. OF THE MICH. MER.,
MICHIGAN.



*Department of the Interior,
General Land Office,
May 4, 1878.*

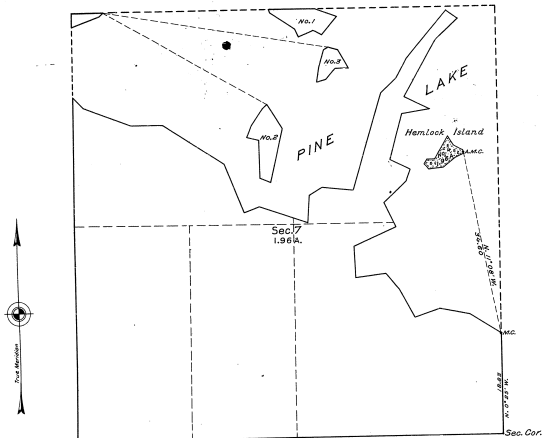
*The above Diagram of Island No. 1, in Sections 6 and 7, Township
1 North, Range 10 West of the Michigan Meridian in the
State of Michigan has been constructed from the field notes on file
in this Office and areas calculated in accordance with Section
2219, U. S. Revised Statute.*

J. Williamson
Commissioner
and Ex. Officer, Gen. Land
Office of Michigan.

TOWNSHIP N^o 1 NORTH, RANGE N^o 10 WEST OF THE MICHIGAN MERIDIAN, MICHIGAN.
 PLAT OF HEMLOCK ISLAND IN PINE LAKE.

7-38

7-38 ②



Mean Magnetic Declination. SCALE: 1 INCH = 10 CHAINS. Area Surveyed, 1.96 Acres.

LINES DESIGNATED BY WHOM SURVEYED	NO	GROUP	DATE	MILEAGE		WHEN SURVEYED	
				MLS.	CHS.	BEGIN.	COMPLETED
Exterior				0	18.83	JULY 9,	JULY 11,
Subdivisional	JOB. C. THOMA	16	MAY 26,	0	21.49	1927-	1927-
Meander	U.S.C. ENGINEER		1927-	0	34.60		
Miscellaneous				0			

Office of U.S. Supervisor of Surveys
 Denver, Colorado, April 14, 1928.
 The above plat of Township No. 1 North, Range No. 10 West,
 of the Michigan Meridian, Michigan,
 is strictly conformable to the field notes of the survey
 thereof which have been examined and approved.

DEPARTMENT OF THE INTERIOR
 GENERAL LAND OFFICE
 Washington, D. C., June 28, 1928.
 The survey represented by this plat
 having been correctly executed in accordance
 with the requirements of law and the regulations
 of this office, is hereby accepted.

Walter E. Brown
 U.S. Surveyor of Surveys

Walter C. Howell
 Assistant Commissioner