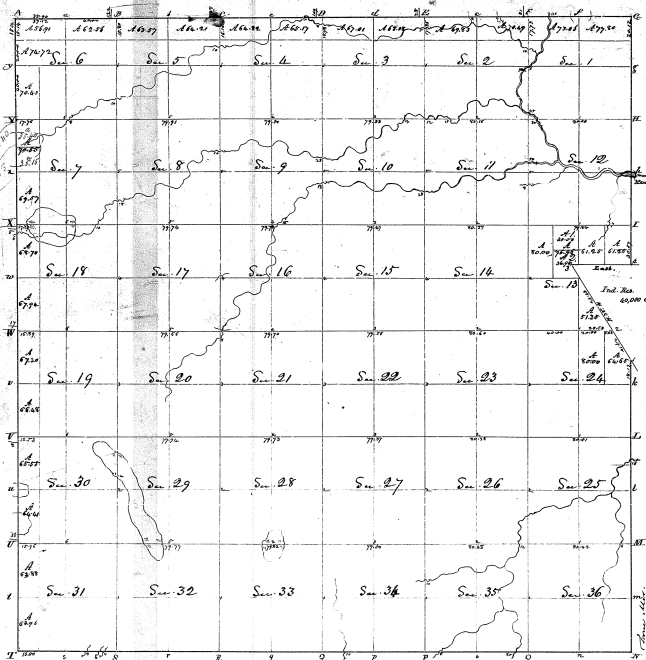


Township N. 14 North, Range N. 13 East Mer. (the Top)



Surveyed in March 1881, by Harvey Parker D.S.

The above map of Township N. 14 N. of Range N. 13 East of the principal Meridian (Mer. Sec.) is hereby confirmed to the field notes of the Survey thereof on file in this Office, which have been examined & approved.  
 Surveyor General's Office?  
 Cincinnati, Dec 30, 1882

H. J. Williams

Sections		Contents		Acres	Value
Sec.	Cont.	Acres	Value		
Ac 176	1	77	60	60	17.00
Sc	"	80	60	60	17.00
Sc	"	70	60	60	17.00
Sc	"	30	60	60	17.00
Ac 176	2	77	60	60	17.00
Sc	"	80	60	60	17.00
Sc	"	70	60	60	17.00
Sc	"	30	60	60	17.00
Ac 176	3	77	60	60	17.00
Sc	"	80	60	60	17.00
Sc	"	70	60	60	17.00
Sc	"	30	60	60	17.00
Ac 176	4	77	60	60	17.00
Sc	"	80	60	60	17.00
Sc	"	70	60	60	17.00
Sc	"	30	60	60	17.00
Ac 176	5	77	60	60	17.00
Sc	"	80	60	60	17.00
Sc	"	70	60	60	17.00
Sc	"	30	60	60	17.00
Ac 176	6	77	60	60	17.00
Sc	"	80	60	60	17.00
Sc	"	70	60	60	17.00
Sc	"	30	60	60	17.00
Ac 176	7	77	60	60	17.00
Sc	"	80	60	60	17.00
Sc	"	70	60	60	17.00
Sc	"	30	60	60	17.00
Ac 176	8	77	60	60	17.00
Sc	"	80	60	60	17.00
Sc	"	70	60	60	17.00
Sc	"	30	60	60	17.00
Ac 176	9	77	60	60	17.00
Sc	"	80	60	60	17.00
Sc	"	70	60	60	17.00
Sc	"	30	60	60	17.00
Ac 176	10	77	60	60	17.00
Sc	"	80	60	60	17.00
Sc	"	70	60	60	17.00
Sc	"	30	60	60	17.00
Ac 176	11	77	60	60	17.00
Sc	"	80	60	60	17.00
Sc	"	70	60	60	17.00
Sc	"	30	60	60	17.00
Ac 176	12	77	60	60	17.00
Sc	"	80	60	60	17.00
Sc	"	70	60	60	17.00
Sc	"	30	60	60	17.00
Ac 176	13	77	60	60	17.00
Sc	"	80	60	60	17.00
Sc	"	70	60	60	17.00
Sc	"	30	60	60	17.00
Ac 176	14	77	60	60	17.00
Sc	"	80	60	60	17.00
Sc	"	70	60	60	17.00
Sc	"	30	60	60	17.00
Ac 176	15	77	60	60	17.00
Sc	"	80	60	60	17.00
Sc	"	70	60	60	17.00
Sc	"	30	60	60	17.00
Ac 176	16	77	60	60	17.00
Sc	"	80	60	60	17.00
Sc	"	70	60	60	17.00
Sc	"	30	60	60	17.00
Ac 176	17	77	60	60	17.00
Sc	"	80	60	60	17.00
Sc	"	70	60	60	17.00
Sc	"	30	60	60	17.00
Ac 176	18	77	60	60	17.00
Sc	"	80	60	60	17.00
Sc	"	70	60	60	17.00
Sc	"	30	60	60	17.00
Ac 176	19	77	60	60	17.00
Sc	"	80	60	60	17.00
Sc	"	70	60	60	17.00
Sc	"	30	60	60	17.00
Ac 176	20	77	60	60	17.00
Sc	"	80	60	60	17.00
Sc	"	70	60	60	17.00
Sc	"	30	60	60	17.00
Ac 176	21	77	60	60	17.00
Sc	"	80	60	60	17.00
Sc	"	70	60	60	17.00
Sc	"	30	60	60	17.00
Ac 176	22	77	60	60	17.00
Sc	"	80	60	60	17.00
Sc	"	70	60	60	17.00
Sc	"	30	60	60	17.00
Ac 176	23	77	60	60	17.00
Sc	"	80	60	60	17.00
Sc	"	70	60	60	17.00
Sc	"	30	60	60	17.00
Ac 176	24	77	60	60	17.00
Sc	"	80	60	60	17.00
Sc	"	70	60	60	17.00
Sc	"	30	60	60	17.00
Ac 176	25	77	60	60	17.00
Sc	"	80	60	60	17.00
Sc	"	70	60	60	17.00
Sc	"	30	60	60	17.00
Ac 176	26	77	60	60	17.00
Sc	"	80	60	60	17.00
Sc	"	70	60	60	17.00
Sc	"	30	60	60	17.00
Ac 176	27	77	60	60	17.00
Sc	"	80	60	60	17.00
Sc	"	70	60	60	17.00
Sc	"	30	60	60	17.00
Ac 176	28	77	60	60	17.00
Sc	"	80	60	60	17.00
Sc	"	70	60	60	17.00
Sc	"	30	60	60	17.00
Ac 176	29	77	60	60	17.00
Sc	"	80	60	60	17.00
Sc	"	70	60	60	17.00
Sc	"	30	60	60	17.00
Ac 176	30	77	60	60	17.00
Sc	"	80	60	60	17.00
Sc	"	70	60	60	17.00
Sc	"	30	60	60	17.00
Ac 176	31	77	60	60	17.00
Sc	"	80	60	60	17.00
Sc	"	70	60	60	17.00
Sc	"	30	60	60	17.00
Ac 176	32	77	60	60	17.00
Sc	"	80	60	60	17.00
Sc	"	70	60	60	17.00
Sc	"	30	60	60	17.00
Ac 176	33	77	60	60	17.00
Sc	"	80	60	60	17.00
Sc	"	70	60	60	17.00
Sc	"	30	60	60	17.00
Ac 176	34	77	60	60	17.00
Sc	"	80	60	60	17.00
Sc	"	70	60	60	17.00
Sc	"	30	60	60	17.00
Ac 176	35	77	60	60	17.00
Sc	"	80	60	60	17.00
Sc	"	70	60	60	17.00
Sc	"	30	60	60	17.00
Ac 176	36	77	60	60	17.00
Sc	"	80	60	60	17.00
Sc	"	70	60	60	17.00
Sc	"	30	60	60	17.00
Total				1114.00	1114.00
Total				1114.00	1114.00

