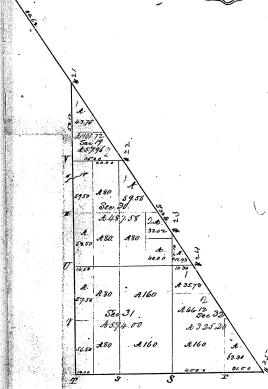
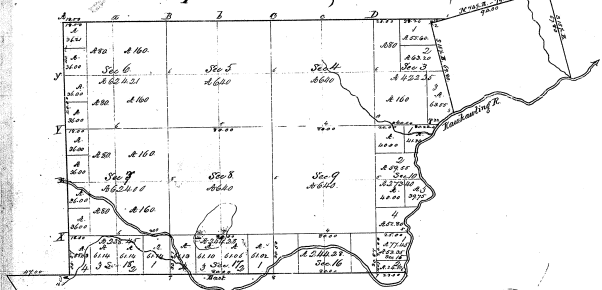




1875

Township N<sup>o</sup> 14 Range N<sup>o</sup> 4 East Mer.

111  
23-26  
23-26



ALL north part cancelled

Total number of acres 6829.75

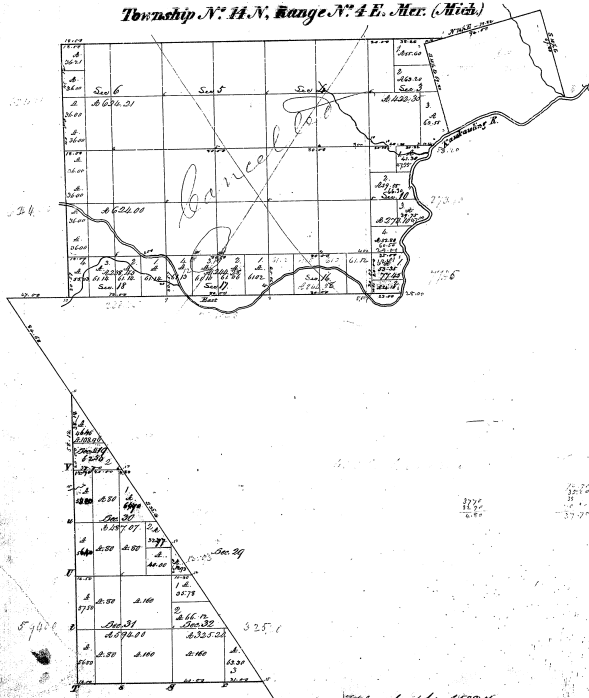
Where located	By whom done?	Date of survey	Acres	Remarks
St. Louis	J. A. Hinkle	July 4, 1837	33.00	37 <sup>th</sup> of 1837
St. Louis	J. A. Hinkle	July 4, 1837	3.75	37 <sup>th</sup> of 1837

The above Map of Township N<sup>o</sup> 14 North of Range N<sup>o</sup> 4 East of the Principal Meridian was surveyed on the 27<sup>th</sup> of August 1837 by J. A. Hinkle Surveyor General of the Territory and is filed in this Office which has been examined and approved by the Surveyor General of the Territory on the 11<sup>th</sup> of August 1837.

Scale 20 Chains to an Inch

Township N. 14 N, Range N. 4 E. Mer. (Mich.)

203-2  
83-83



Total number of acres 1528.06

County	Survey	By whom made	Year of record	Acres of survey	When made	Section	Acres of section
Calhoun	1878	Wm. H. ...	1878	1528.06	1878	1-36	1528.06
Calhoun	1878	Wm. H. ...	1878	1528.06	1878	1-36	1528.06

The above map is a true and correct copy of the original map of Range N. 4 E. of the Township N. 14 N. of Calhoun County, Michigan, as the same is on file in the Office of the Surveyor General of Michigan, and has been examined and approved by the Surveyor General of Michigan, and is a true and correct copy of the original map of Range N. 4 E. of the Township N. 14 N. of Calhoun County, Michigan, as the same is on file in the Office of the Surveyor General of Michigan, and has been examined and approved by the Surveyor General of Michigan.

Wm. H. ...  
Surveyor General