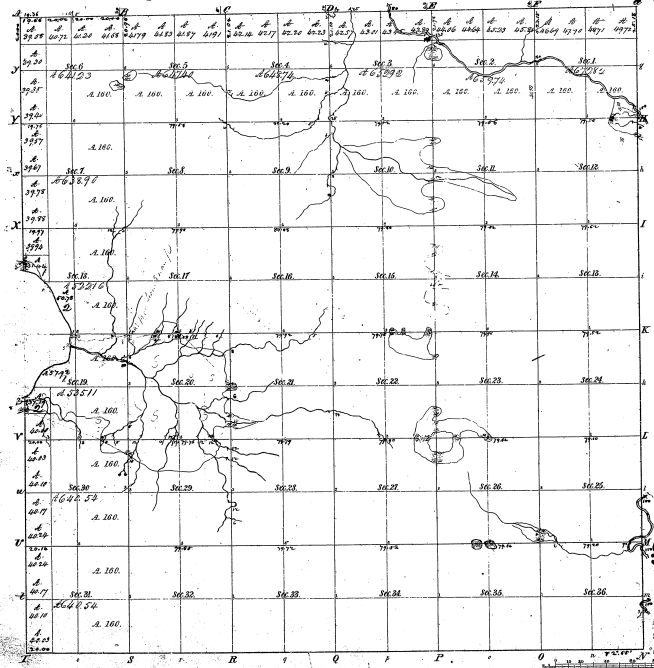


Township 1st 25th N. Range No 15 W. Mer. (Mich.)



Meanders of part of a Land in Section 18 & 19

Point	Course	Dist.	Course	Dist.	Point	Course	Dist.
1	N 88° 00' E	1.00					
2	N 88° 00' E	1.00					
3	N 88° 00' E	1.00					
4	N 88° 00' E	1.00					
5	N 88° 00' E	1.00					
6	N 88° 00' E	1.00					
7	N 88° 00' E	1.00					
8	N 88° 00' E	1.00					
9	N 88° 00' E	1.00					
10	N 88° 00' E	1.00					
11	N 88° 00' E	1.00					
12	N 88° 00' E	1.00					
13	N 88° 00' E	1.00					
14	N 88° 00' E	1.00					
15	N 88° 00' E	1.00					
16	N 88° 00' E	1.00					
17	N 88° 00' E	1.00					
18	N 88° 00' E	1.00					
19	N 88° 00' E	1.00					
20	N 88° 00' E	1.00					
21	N 88° 00' E	1.00					
22	N 88° 00' E	1.00					
23	N 88° 00' E	1.00					
24	N 88° 00' E	1.00					
25	N 88° 00' E	1.00					
26	N 88° 00' E	1.00					
27	N 88° 00' E	1.00					
28	N 88° 00' E	1.00					
29	N 88° 00' E	1.00					
30	N 88° 00' E	1.00					
31	N 88° 00' E	1.00					
32	N 88° 00' E	1.00					
33	N 88° 00' E	1.00					
34	N 88° 00' E	1.00					
35	N 88° 00' E	1.00					
36	N 88° 00' E	1.00					

17-11

Total number of Acres 35,851.16

Survey designated	When Surveyed	Date of Conveyance	Amount of Survey	When Surveyed	Amount of Survey	When Surveyed	Amount of Survey
Johns. Co. v.
...
...

This plan, map of Township 1st 25th N. of Range 1st 15th W. of the Principal Meridian, Michigan, is hereby approved in the following manner, to wit: That the survey shown on this plan, map, and the same, be and are approved.

Surveyor General's Office
Lansing, Mich. 25th 1859.

Caroline J. ...