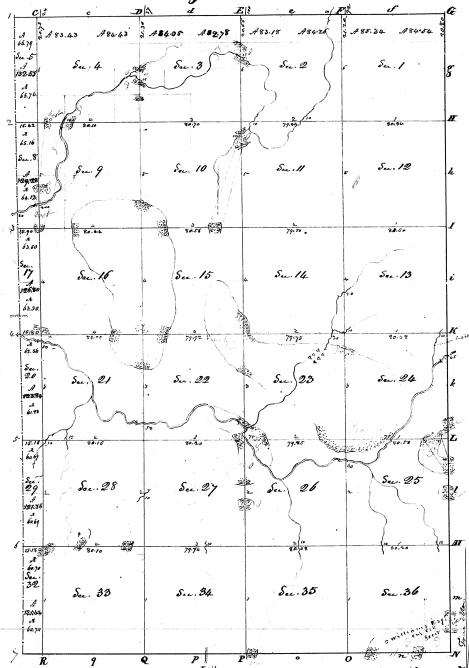


Township N<sup>o</sup> 11 South, Range N<sup>o</sup> 11 West Mer. (Misc. Ter.)

H=15

4-15-23



Surveyed in June 1889. by George Hildreth, R.S.

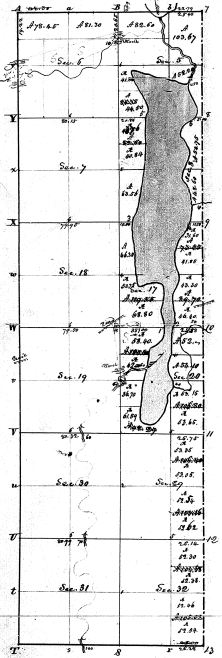
Scale 40 000 Feet = 1 inch

Township			Range		
Sections	Area	Vol.	Sections	Area	Vol.
N11 N11	1	96.56			
S11	-	90			
S11 NW	-	87.34			
S11	-	90			
S11	2 1/2	220			
S11 NE	2	96.26			
S11	-	90			
N11 NW	-	87.18			
S11	-	90			
S11	-	90			
N11 N11	3	82.78			
S11	-	90			
N11	-	90.00			
S11	-	90			
S11	3 1/2	320			
S11	4 1/2	366.43			
S11	5 1/2	591			
S11 NW	-	87.63			
S11	-	90			
S11	-	90			
f. S11	8	132.57			
S11	9	129.29			
	9	600			
	10	600			
	11	600			
	12	600			
	13	600			
	14	600			
	15	600			
	16	600			
	17	600			
f. S11	17	121.90			
	20	123.76			
S11	21	600			
	22	600			
	23	600			
	24	600			
	25	600			
	26	600			
	27	600			
	28	600			
	29	600			
f. S11	29	121.96			
	30	121.66			
S11	33	600			
	34	600			
	35	600			
	36	600			
Total		7674.23			

Township N<sup>o</sup> VI south, Range N<sup>o</sup> VI west Mer. (Mich. Ter.)

4-15

4-15



Indian Reserve at Michesaube.

Sec.	Contch	Area
100	67	
S.E. 100	52	60
S.W. 100	50	
S.E. 101	52	20
S.W. 101	58	25
S.E. 102	57	20
S.W. 102	50	
S.E. 103	58	05
S.W. 103	50	
S.E. 104	50	
S.W. 104	60	
S.E. 105	86	70
S.W. 105	82	60
S.E. 106	68	60
S.W. 106	65	52
S.E. 107	73	65
S.W. 107	60	20
S.E. 108	89	70
S.W. 108	119	75
S.E. 109	60	
S.W. 109	60	
S.E. 110	72	
S.W. 110	52	10
S.E. 111	100	80
S.W. 111	100	80
S.E. 112	99	70
S.W. 112	106	00
S.E. 113	105	18
S.W. 113	104	85
S.E. 114	105	
S.W. 114	320	
		6,273
		96

Surveyed in December 1825 by William Bradford L.S.