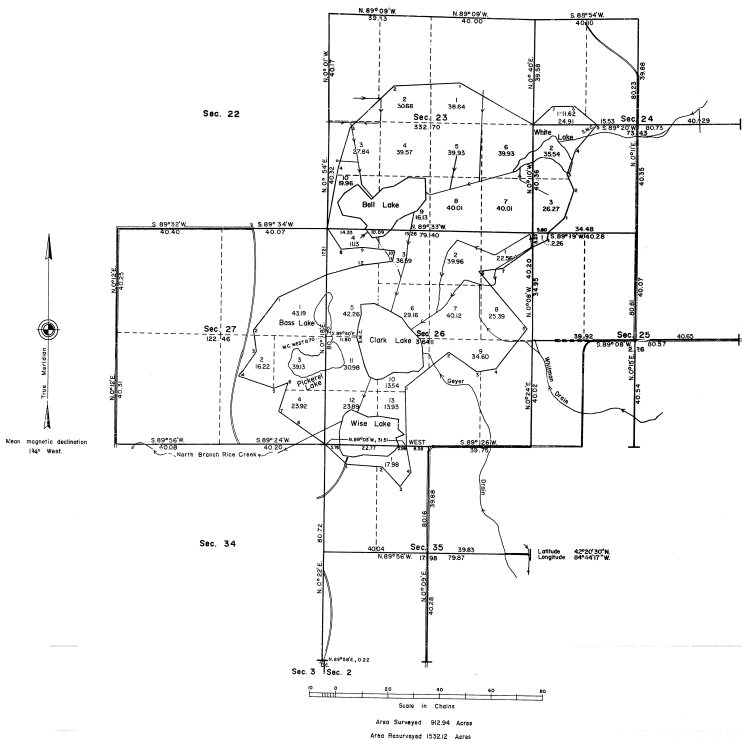


TOWNSHIP 1 SOUTH, RANGE 4 WEST, OF THE MICHIGAN MERIDIAN, MICHIGAN.

DEPENDENT RESURVEY AND OMITTED LAND SURVEY



A history of earlier surveys is contained in the field notes.

This plat represents a dependent resurvey of a portion of the section boundaries, designed to restore the corners in their true original locations according to the best available evidence; survey of a portion of the section subdivisional lines, and an extension survey to include lands omitted from the original survey in T. 1 S., R. 4 W., Michigan Meridian, Michigan.

Except the new subdivisions as shown hereon, the lettings and areas are as shown on the plat approved January 14, 1826.

These surveys were executed by Louis S. Gilbert and Francis D. Ekobosh, Jr., Cadastral Surveyors, from May 12 to June 25, 1971, according to Special Instructions dated May 6, 1971 for Group No. 74, Michigan.

The position of the original meander courses of Ball, Clark and Wise Lakes is shown by an irregular line with numerical angle points. These lines, as originally surveyed, were grossly in error and have been established as fixed boundaries on this plat. The directions and lengths of the several courses have been adjusted to the record of the original survey.

UNITED STATES DEPARTMENT OF THE INTERIOR
BUREAU OF LAND MANAGEMENT
Washington, D. C. August 28, 1972

This plat is strictly conformable to the approved field notes, and the survey, having been correctly executed in accordance with the requirements of law and the regulations of this Bureau, is hereby accepted.

For the Director

Clark F. Lamm

Chief, Division of Cadastral Survey