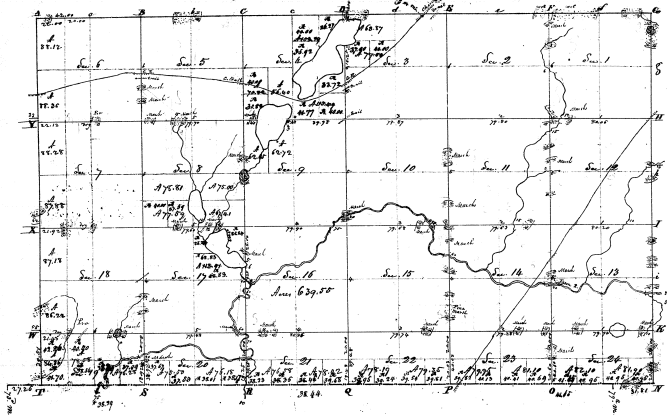


Township N. 7th South, Range N. 22 West (Min. Ten.)



Surveyed in May 1828 - by Robert Clark Junr. Secy.

11 36

Original		Corrected	
Ac. & Cts.	Acres & Cts.	Ac. & Cts.	Acres & Cts.
Sec 1	631		
Sec 2	640		
Sec 3	320		
Sec 4	640		
Sec 5	640		
Sec 6	640		
Sec 7	640		
Sec 8	640		
Sec 9	640		
Sec 10	640		
Sec 11	640		
Sec 12	640		
Sec 13	640		
Sec 14	640		
Sec 15	640		
Sec 16	640		
Sec 17	640		
Sec 18	640		
Sec 19	640		
Sec 20	640		
Sec 21	640		
Sec 22	640		
Sec 23	640		
Sec 24	640		
Sec 25	640		
Sec 26	640		
Sec 27	640		
Sec 28	640		
Sec 29	640		
Sec 30	640		
Sec 31	640		
Sec 32	640		
Sec 33	640		
Sec 34	640		
Sec 35	640		
Sec 36	640		
Total	23577	76	

4-36