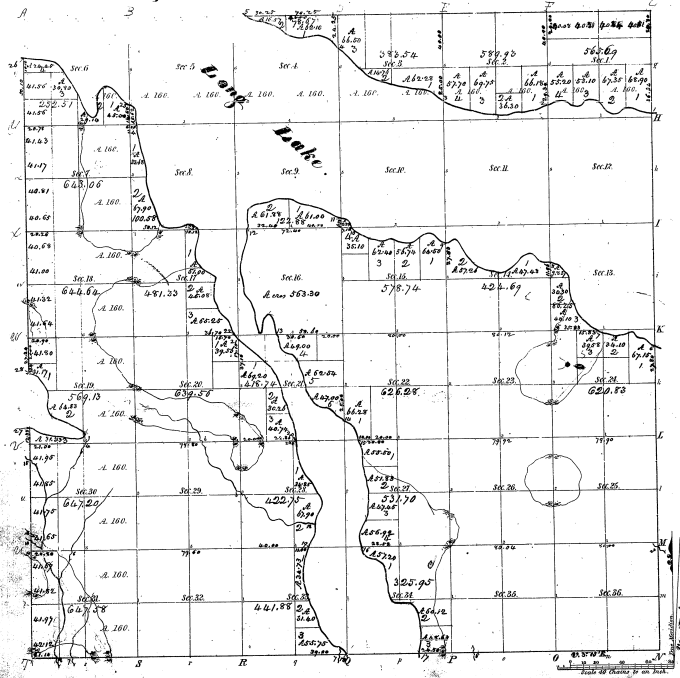


Township 1° 33' N Range 1° 7' W Mer.



Total number of Acres 15,886.50

Survey Designated	By Whom Surveyed	Date of Condit.	Amount of Survey	When Surveyed	How Surveyed
15	W. H. White	1820	1500	1820	1820
16	W. H. White	1820	1500	1820	1820
17	W. H. White	1820	1500	1820	1820
18	W. H. White	1820	1500	1820	1820
19	W. H. White	1820	1500	1820	1820
20	W. H. White	1820	1500	1820	1820
21	W. H. White	1820	1500	1820	1820
22	W. H. White	1820	1500	1820	1820
23	W. H. White	1820	1500	1820	1820
24	W. H. White	1820	1500	1820	1820
25	W. H. White	1820	1500	1820	1820
26	W. H. White	1820	1500	1820	1820
27	W. H. White	1820	1500	1820	1820
28	W. H. White	1820	1500	1820	1820
29	W. H. White	1820	1500	1820	1820
30	W. H. White	1820	1500	1820	1820
31	W. H. White	1820	1500	1820	1820
32	W. H. White	1820	1500	1820	1820
33	W. H. White	1820	1500	1820	1820
34	W. H. White	1820	1500	1820	1820
35	W. H. White	1820	1500	1820	1820
36	W. H. White	1820	1500	1820	1820

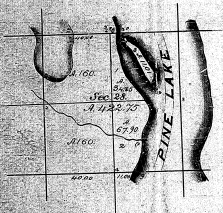
The above map of Township 1° 33' N. of Range 1° 7' West of the Principal Meridian, Michigan, is hereby returned to the following original owner, in full and in due time, after which has been examined and approved.

Surveyor General's Office
Ann Arbor, Dec. 20, 1820.

1824

Section	Acres	Value	Owner
1	1500	1500	W. H. White
2	1500	1500	W. H. White
3	1500	1500	W. H. White
4	1500	1500	W. H. White
5	1500	1500	W. H. White
6	1500	1500	W. H. White
7	1500	1500	W. H. White
8	1500	1500	W. H. White
9	1500	1500	W. H. White
10	1500	1500	W. H. White
11	1500	1500	W. H. White
12	1500	1500	W. H. White
13	1500	1500	W. H. White
14	1500	1500	W. H. White
15	1500	1500	W. H. White
16	1500	1500	W. H. White
17	1500	1500	W. H. White
18	1500	1500	W. H. White
19	1500	1500	W. H. White
20	1500	1500	W. H. White
21	1500	1500	W. H. White
22	1500	1500	W. H. White
23	1500	1500	W. H. White
24	1500	1500	W. H. White
25	1500	1500	W. H. White
26	1500	1500	W. H. White
27	1500	1500	W. H. White
28	1500	1500	W. H. White
29	1500	1500	W. H. White
30	1500	1500	W. H. White
31	1500	1500	W. H. White
32	1500	1500	W. H. White
33	1500	1500	W. H. White
34	1500	1500	W. H. White
35	1500	1500	W. H. White
36	1500	1500	W. H. White

PLAT
OF AN ISLAND
IN
PINE LAKE,
Sec. 28, T. 33 N. R. 7 W. MICH. MERDN.
MICHIGAN.



The above Diagram of Island No 3 in Section 28, T. 33 N. R. 7 W. Michigan Meridian, in the State of Michigan, is a correct Plat of Survey executed by Lewis K. Robinson, U.S. Deputy Surveyor, in pursuance of Instructions from the Commissioner of the General Land Office, bearing date the 23rd day of January, 1882, and is strictly conformable to the field notes thereon, which have been examined and approved.

Paid per Report 37307

18-14 (2)

Scale 40 Chains to an Inch.

Department of the Interior
General Land Office,
April 12th, 1882.

A. C. McFarland
Commissioner
& Ex. Officer Surveyor General
Michigan