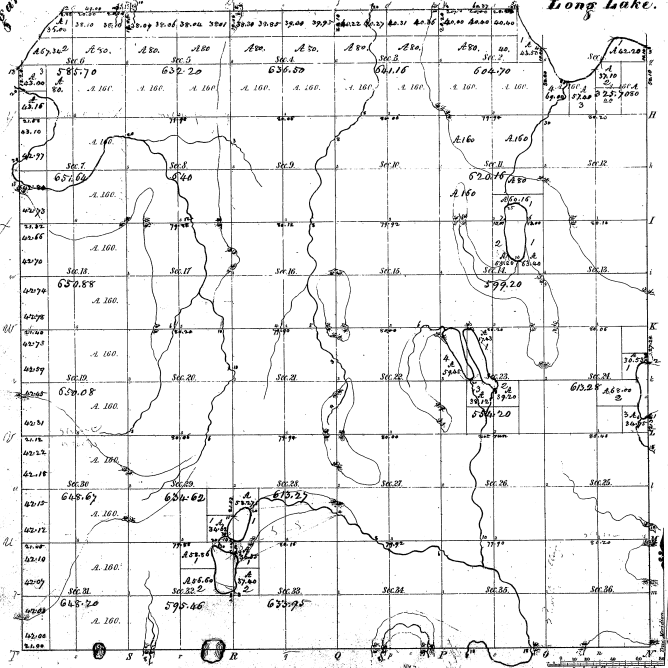


E. Michigan.

Township 1° 33' N Range 1° 8' W No. 187

Long Lake.



| Number of Acres |        | Acres  | Acres  |
|-----------------|--------|--------|--------|
| 1               | 637.70 | 637.70 | 637.70 |
| 2               | 632.20 | 632.20 | 632.20 |
| 3               | 636.89 | 636.89 | 636.89 |
| 4               | 641.18 | 641.18 | 641.18 |
| 5               | 604.70 | 604.70 | 604.70 |
| 6               | 637.63 | 637.63 | 637.63 |
| 7               | 630.88 | 630.88 | 630.88 |
| 8               | 639.08 | 639.08 | 639.08 |
| 9               | 630.67 | 630.67 | 630.67 |
| 10              | 630.62 | 630.62 | 630.62 |
| 11              | 635.23 | 635.23 | 635.23 |
| 12              | 635.46 | 635.46 | 635.46 |
| 13              | 633.94 | 633.94 | 633.94 |
| 14              | 602.4  | 602.4  | 602.4  |
| 15              | 602.0  | 602.0  | 602.0  |

18-13

Total number of Acres 22,419.57

| Survey Designated | When Approved | Date of Contract | Amount of Survey | When Surveyed | How Surveyed |
|-------------------|---------------|------------------|------------------|---------------|--------------|
| Township 1° 33' N | 1875          | 1875             | 1820             | 1820          | 1820         |
| Subdivisions      | 1875          | 1875             | 1820             | 1820          | 1820         |
| S. Boundary       | 6.01.02       | 3° 1820          | 3° 1820          |               |              |

This map, being Township 1° 33' N, Range 1° 8' West of the Michigan Meridian, is hereby approved by the following Surveyors, who have been named and approved by the Surveyors Office, on the 24th day of Dec. 1881.

Geo. J. ...