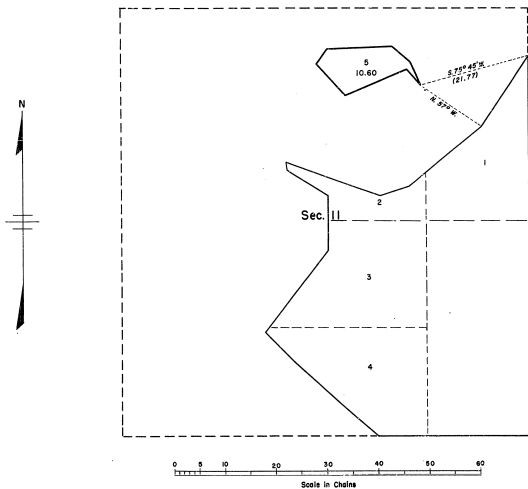




48-7 (2)

TOWNSHIP 39 NORTH, RANGE 10 WEST OF THE MICHIGAN MERIDIAN, MICHIGAN  
 SUPPLEMENTAL PLAT OF SECTION II



This plat, based upon the plat approved August 23, 1869, is prepared to afford proper designation for the island in sec. 11.

UNITED STATES DEPARTMENT OF THE INTERIOR  
 BUREAU OF LAND MANAGEMENT  
 Washington, D. C. November 29, 1954

This plat showing amended lottings, having been correctly prepared in accordance with the regulations, is hereby accepted.

For the Director

*Earl S. Harrington*  
 Cadastral Engineering Officer