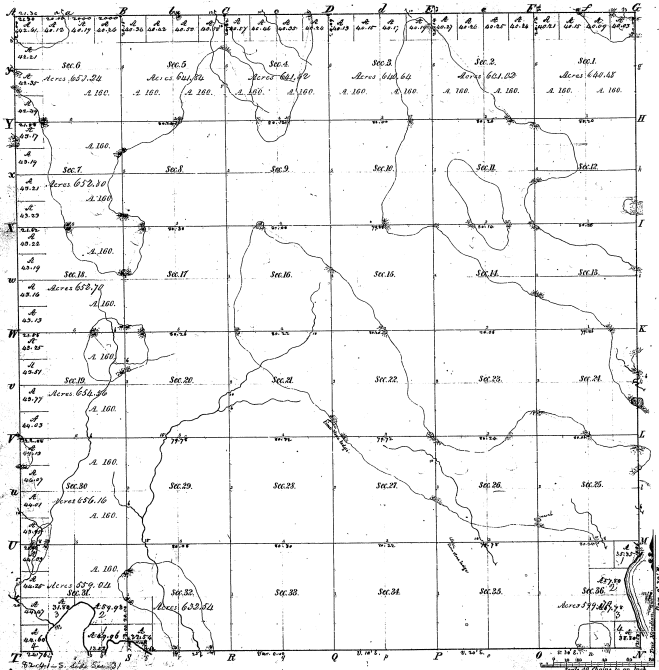


Township N^o 12 N. Range N^o 2 E. Mer. (Mich.)



Meanders of <i>Sanctus</i> and <i>Sanctus</i> Schools			
Point Course	Dist	Point Course	Dist
1	to 26	to 26	10.00
2	to 26	to 26	10.00
3	to 26	to 26	10.00
4	to 26	to 26	10.00
5	to 26	to 26	10.00
6	to 26	to 26	10.00
7	to 26	to 26	10.00
8	to 26	to 26	10.00
9	to 26	to 26	10.00
10	to 26	to 26	10.00
11	to 26	to 26	10.00
12	to 26	to 26	10.00
13	to 26	to 26	10.00
14	to 26	to 26	10.00
15	to 26	to 26	10.00
16	to 26	to 26	10.00
17	to 26	to 26	10.00
18	to 26	to 26	10.00
19	to 26	to 26	10.00
20	to 26	to 26	10.00
21	to 26	to 26	10.00
22	to 26	to 26	10.00
23	to 26	to 26	10.00
24	to 26	to 26	10.00
25	to 26	to 26	10.00
26	to 26	to 26	10.00
27	to 26	to 26	10.00
28	to 26	to 26	10.00
29	to 26	to 26	10.00
30	to 26	to 26	10.00
31	to 26	to 26	10.00
32	to 26	to 26	10.00
33	to 26	to 26	10.00
34	to 26	to 26	10.00
35	to 26	to 26	10.00
36	to 26	to 26	10.00

33-27

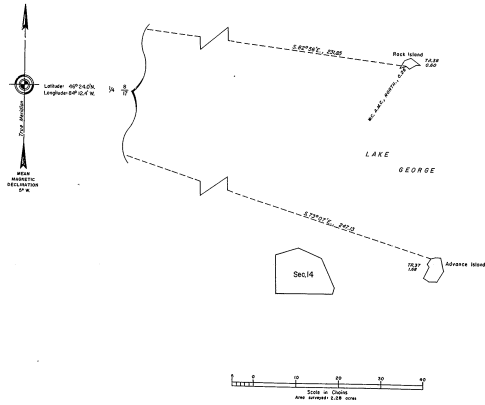
Total number of Acres 22,322.32			
Survey Assigned	By Whom Surveyed	Date of Contract	Amount of Survey
Township	John A. Conant	June 10, 1865	22,322.32
Subdivisions	J. H. Mearns	March 1868	62, 12, 70

The above copy of Township N 12 N, Range N 2 E, east of the Principal Meridian, Michigan, was actually surveyed in the field with a field surveying instrument for the 1/2 mile before, which has been previously approved by the Survey General of Michigan.

Surveyed by *J. H. Mearns* Survey General of Mich. *J. H. Mearns*

33-6

TOWNSHIP 46 NORTH, RANGE 2 EAST, OF THE MICHIGAN MERIDIAN, MICHIGAN.
SURVEY OF ISLANDS



A history of surveys is contained in the field notes.

This plat represents the survey of two islands in Lake George, T. 46 N., R. 2 E., Michigan Meridian, Michigan.

Order as indicated herein, the lotting, and areas are as shown on the plat approved January 21, 1884.

Survey executed by GARY L. STARR, Geodetic Surveyor, beginning October 4, 1917, and completed October 3, 1917, pursuant to Special Instructions dated June 3, 1915, for Group No. 74, Michigan.

UNITED STATES DEPARTMENT OF THE INTERIOR
BUREAU OF LAND MANAGEMENT
Denver, Colorado November 19, 1921

This plat is strictly conformable to the approved field notes and the survey, having been correctly checked in accordance with the requirements of law and the regulations of this Bureau, is hereby accepted.

For the Director
James S. Mitchell

Acting Chief, Geodetic Survey
Examination and Approval Staff

16

16

17

17

16

16