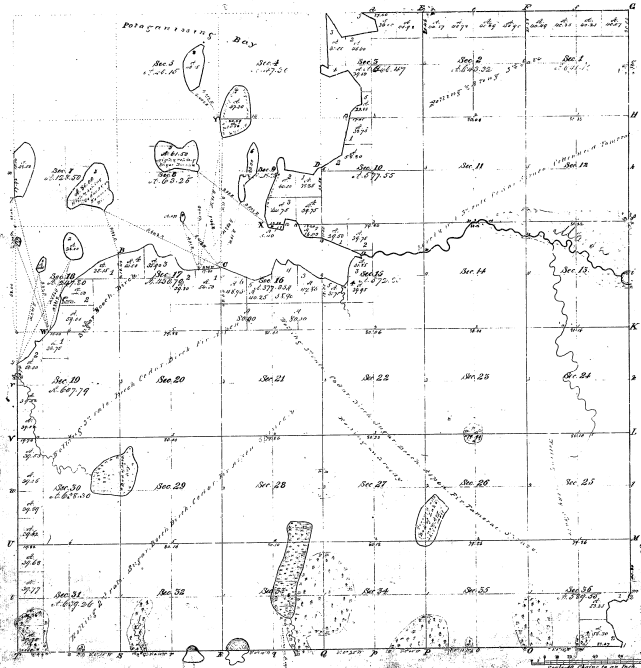


Township N<sup>o</sup> 42 N. Range N<sup>o</sup> 6 E.

Mer. Mich.

Drummond Island



Bridges of		No. of Poles	Crossing	No. of Poles	Crossing
Span	Material				
33					
N16					
S27 <sup>1</sup> / <sub>2</sub> S. S. 12 <sup>1</sup> / <sub>2</sub> E. 20' 1/2" in					
S. 1/2 Sec. 10					

33-25

Total number of Acres 18400.00

Survey	By Whom Surveyed	Date of Contract	Amount of Acres Surveyed	When Surveyed	Section
Original	John H. H. H.	1855	18400.00	1855	1-36
Subdivision	John H. H.	1855	18400.00	1855	1-36

The above copy of Township N<sup>o</sup> 42 and Range N<sup>o</sup> 6 East of the 10<sup>th</sup> Meridian is a true and correct copy of the original survey as shown in the office of the Surveyor General of Michigan.

Surveyor General of Michigan  
 Detroit, Mich. 31<sup>st</sup> Dec 1860