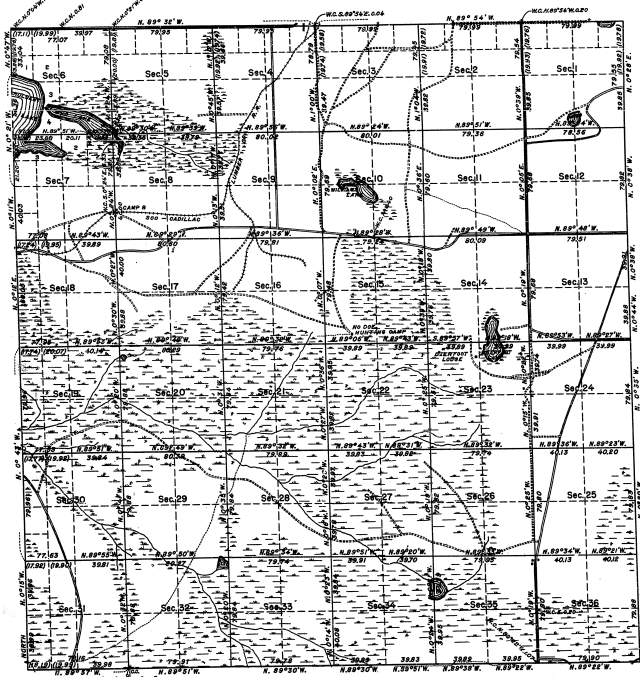


TOWNSHIP NO. 45 NORTH, RANGE NO. 6 WEST, OF THE MICHIGAN MERIDIAN, MICHIGAN.
DEPENDENT RESURVEY.



MEMORANDUM.

THIS PLAT OF THE RESURVEY OF T. 45 N., R. 6 W., DELINEATES A RETRACEMENT AND REESTABLISHMENT OF THE LINES OF THE ORIGINAL SURVEY AS SHOWN UPON THE PLAT APPROVED JUNE 5, 1891, IN THEIR TRUE ORIGINAL POSITIONS ACCORDING TO THE BEST AVAILABLE EVIDENCE OF THE POSITION OF THE ORIGINAL CORNERS. ALL DIFFERENCES BETWEEN THE MEASUREMENTS SHOWN ON THE ORIGINAL PLAT AND THOSE DERIVED IN THE RETRACEMENT HAVE BEEN DISTRIBUTED PROPORTIONALLY BETWEEN ACCEPTED CORNERS IN ACCORDANCE WITH SURVEYING RULES. REFERENCE WILL BE MADE TO THE ORIGINAL PLAT FOR THE SHOWING OF AREAS AND MORE DETAILED DESCRIPTIONS OF THE VARIOUS SMALLER SUBDIVISIONS.

THE RESURVEY WAS EXECUTED PURSUANT TO AUTHORITY CONTAINED IN GENERAL LAND OFFICE LETTER 1678465 "E" DATED MARCH 23, 1937.

WITH THE EXCEPTION OF A FEW SMALL STANDS OF VIRGIN TIMBER IN SECS. 6, 7, 18, 25, 34 AND 35, THE UPLAND AREA IS GENERALLY TIMBERED WITH A DENSE STAND OF SECOND GROWTH MAPLE, BEECH, BIRCH, HEMLOCK, POPLAR, AND PINE TIMBER. THE DRAIN AREAS ARE TIMBERED WITH CEDAR, SPRUCE, AND TAMARACK.

UNITED STATES DEPARTMENT OF THE INTERIOR
GENERAL LAND OFFICE

SCALE: 1 INCH EQUALS 40 CHAINS.

AREA RESURVEYED, 22,767.89 ACRES.

LINES DESIGNATED BY WHOM SURVEYED	GROUP NO.	NAME	DATE	WHEN SURVEYED	
				BEGUN	COMPLETED
EXTENSION		OSCAR S. WALSH		JULY 17,	SEPTEMBER 2,
SUBDIVISIONAL		LESTER S. BANN	MARCH 16, 1938.	1938.	1939.
MEANDER	42				

DENVER, COLORADO, MARCH 11, 1943.
THIS PLAT OF TOWNSHIP NO. 45 NORTH, RANGE NO. 6 WEST, OF THE MICHIGAN MERIDIAN, MICHIGAN, IS STRICTLY RESPONSIBLE TO THE FIELD NOTES OF THE RESURVEY THEREOF, WHICH HAVE BEEN EXAMINED AND APPROVED.

WASHINGTON, D. C., MARCH 18, 1943.
THE RESURVEY REPRESENTED BY THIS PLAT, HAVING BEEN CORRECTLY EXECUTED IN ACCORDANCE WITH THE REQUIREMENTS OF LAW AND THE REGULATIONS OF THIS OFFICE, IS HEREBY ACCEPTED.

John P. Thomas
SUPERVISOR OF SURVEYS.

John David Wolford
ASSISTANT COMMISSIONER.

34-22

34-22