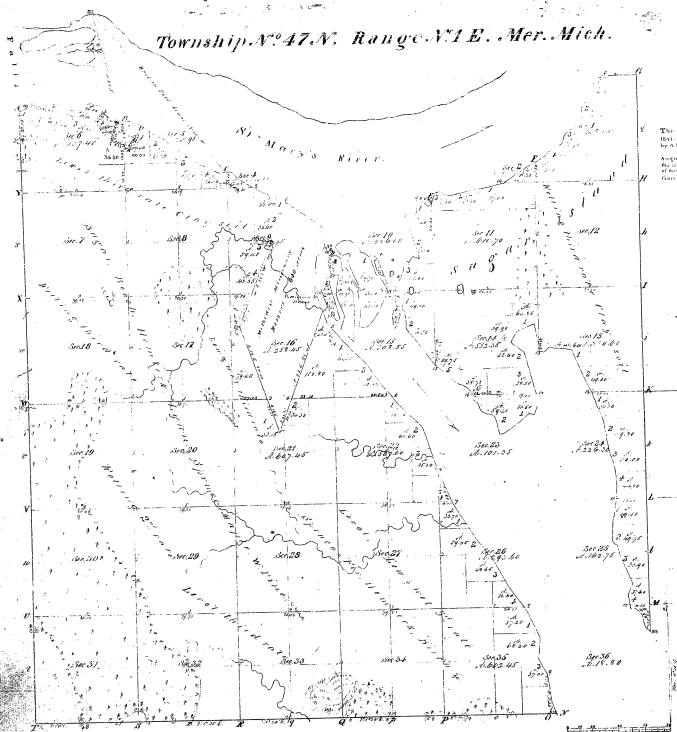


Township N^o 47 N. Range N1 E. Mer. Mich.



Note.

The North Eastern half of this Township was reserved for Public Use on the 27th of April 1841 under the Act of the 27th March 1837, in pursuance of the Proclamation of the 22nd of August 1837 under which certain of the lands in this Township were reserved for the use of the Government. The lands reserved for the use of the Government are shown on this map by a dotted line. The lands reserved for the use of the Government are shown on this map by a dotted line. The lands reserved for the use of the Government are shown on this map by a dotted line.

Total amount of land 11,779.50

Name of landholder	By whom conveyed	Date of conveyance	Acres conveyed	Value thereon
Charles Jones	By J. Smith	May 15, 1840	100	\$1,000
John Smith	John Smith	June 10, 1841	500	\$5,000
John Smith	John Smith	July 10, 1842	750	\$7,500

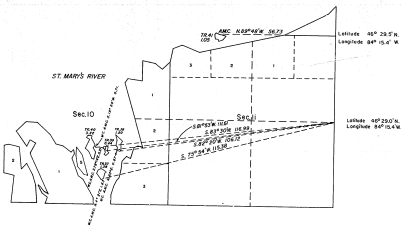
This is a true and correct copy of the original map of the Township of N47 N. of R1 E. of the 1st Meridian in the State of Michigan, as shown on the original map in the office of the Register of the Land Office at Lansing, Michigan, and as the same appears on the original map in the office of the Register of the Land Office at Lansing, Michigan, and as the same appears on the original map in the office of the Register of the Land Office at Lansing, Michigan.

Devised by, Geo. B. ...

TOWNSHIP 47 NORTH, RANGE 1 EAST, MICHIGAN MERIDIAN, MICHIGAN.
SURVEY OF ISLANDS

373

Sec. 2



A history of surveys is contained in the field notes.

This plan represents the survey of five islands in St. Marys River, T. 47 N., R. 1 E., Michigan Meridian, Michigan.

Except as indicated herein, the bearings and areas are as shown on the plan approved January 31, 1941.

Survey executed by Gary L. Kratz, Cadastral Surveyor, beginning October 11, 1977, and completed June 9, 1978, pursuant to Special Instructions dated June 2, 1977, for Group No. 78, Michigan.

UNITED STATES DEPARTMENT OF THE INTERIOR
BUREAU OF LAND MANAGEMENT
Denver, Colorado November 9, 1981

This plan is strictly conformable to the approved field notes, and the survey, being done correctly and in accordance with the requirements of law and the regulations of this Bureau, is hereby accepted.

For the Director

Acting Chief, Cadastral Survey
Education and Approval Staff

16

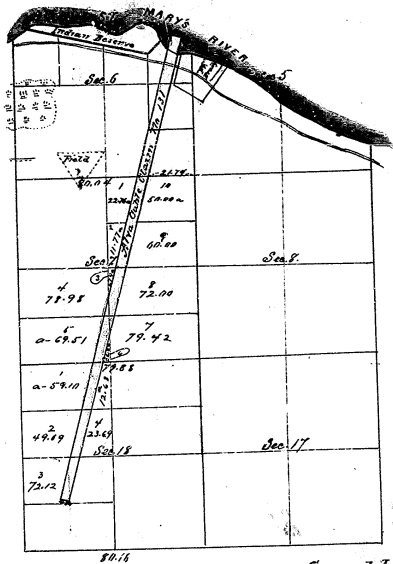
16

12

12

16

16



General Land Office
September, 14th, 1869,

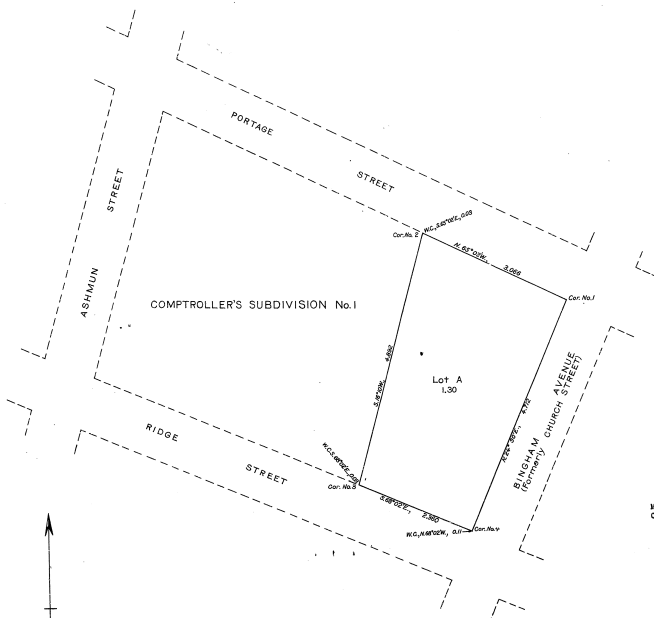
I hereby certify that the above is a plat of the new subdivisions made under the act of the 22nd January, 1863 of Secs. 7 & 18, Township No. 47, Range No. 1 E. Mich.

(Signature)

Comd'g Ex. Office Sur. Gen. Mich.

TOWNSHIP No. 47 NORTH, RANGE No. 1 EAST OF THE MICHIGAN MERIDIAN, MICHIGAN
 PLAT OF LOT A, COMPTROLLER'S SUBDIVISION No. 1, CITY OF SAULT SAINTE MARIE

33-2
 33-3



MEMORANDUM.
 THIS PLAT REPRESENTS THE SURVEY OF A TRACT OF LAND WITHIN THE FORTER FORT BRADY MILITARY RESERVATION, GRANTED TO THE CITY OF SAULT SAINTE MARIE, MICHIGAN, BY AN ACT OF CONGRESS APPROVED MAY 26, 1950 (46 STAT. 350).
 THE SURVEY WAS EXECUTED PURSUANT TO AUTHORITY CONTAINED IN GENERAL LAND OFFICE LETTER 1379400 "F", DATED JULY 2, 1950.

OFFICE OF U. S. SUPERVISOR OF SURVEYS.
 DENVER, COLORADO, FEBRUARY 24, 1952.

THE ABOVE PLAT OF TOWNSHIP No. 47 NORTH, RANGE No. 1 EAST, OF THE MICHIGAN MERIDIAN, MICHIGAN, IS STRICTLY CONFORMABLE TO THE FIELD NOTES OF THE SURVEY TOWNSHIP WHICH HAVE BEEN EXAMINED AND APPROVED.

Wm. H. Johnson
 U. S. SUPERVISOR OF SURVEYS.

DEPARTMENT OF THE INTERIOR
 GENERAL LAND OFFICE
 WASHINGTON, D. C., MARCH 5, 1952.

THE SURVEY REPRESENTED BY THIS PLAT HAVING BEEN CORRECTLY EXECUTED IN ACCORDANCE WITH THE REQUIREMENTS OF LAW AND THE REGULATIONS OF THIS OFFICE, IS HEREBY ACCEPTED.

John C. O'Connell
 ASSISTANT COMMISSIONER.

SCALE: 1 CHAIN TO AN INCH.



LINES DESIGNATED	BY WHOM SURVEYED	GROUP NO.	DATE	MILEAGE		WHEN SURVEYED	
				MLS.	CHS.	BEGUN	COMPLETED
SUBDIVISIONAL	GUY R. VIAL, U.S.G. ENGINEER.	21	APR. 1, 1950.	0	15.03	NOV. 8, 1950.	NOV. 13, 1950.

Original

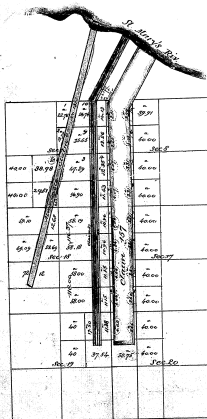
DIAGRAM OF

Private Claims No. 97, 100, 101, 102 & 157

IN TOWNSHIP 47 N. RANGE 1 E.

MICHIGAN.

33-3



Trucks land disposed of by description and subject to interference of private claims as shown on diagram.

Description of Land		
Acres	Secs.	Area
1/2	1	1/2
1/4	1	1/4
1/8	1	1/8
1/16	1	1/16
1/2	2	1/2
1/4	2	1/4
1/8	2	1/8
1/16	2	1/16
1/2	3	1/2
1/4	3	1/4
1/8	3	1/8
1/16	3	1/16
1/2	4	1/2
1/4	4	1/4
1/8	4	1/8
1/16	4	1/16
1/2	5	1/2
1/4	5	1/4
1/8	5	1/8
1/16	5	1/16
1/2	6	1/2
1/4	6	1/4
1/8	6	1/8
1/16	6	1/16
1/2	7	1/2
1/4	7	1/4
1/8	7	1/8
1/16	7	1/16
1/2	8	1/2
1/4	8	1/4
1/8	8	1/8
1/16	8	1/16
1/2	9	1/2
1/4	9	1/4
1/8	9	1/8
1/16	9	1/16
1/2	10	1/2
1/4	10	1/4
1/8	10	1/8
1/16	10	1/16
1/2	11	1/2
1/4	11	1/4
1/8	11	1/8
1/16	11	1/16
1/2	12	1/2
1/4	12	1/4
1/8	12	1/8
1/16	12	1/16
1/2	13	1/2
1/4	13	1/4
1/8	13	1/8
1/16	13	1/16
1/2	14	1/2
1/4	14	1/4
1/8	14	1/8
1/16	14	1/16
1/2	15	1/2
1/4	15	1/4
1/8	15	1/8
1/16	15	1/16
1/2	16	1/2
1/4	16	1/4
1/8	16	1/8
1/16	16	1/16

Note: The area represented on diagram are the quantities remaining after removal of all private claims as shown on diagram. The area of each tract is previously expressed on plat.

Department of the Interior
General Land Office
April 22 1878

I hereby certify that the above diagram of Private Claims No. 97, 100, 101, 102 and 157 in Township 47 North Range 1 East, Michigan Territory, has been computed from the full and correct copies of the office and correct calculated on accordance with Section 22 19 40. J. H. H. H. H.

J. H. H. H. H.
Commissioner

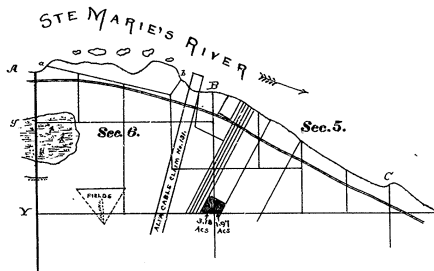


original

John G. Ginn
July 19, 1884

33-5

**Diagram of Lot "A" Section 5; and Lot "A" Section 6,
Township 47 North, Range 1 East,
Michigan Meridian, Michigan.**



General Land Office,
Washington, D.C.,
January 20th, 1887.

I hereby certify the above to be a correct plat of Lot "A"
in the S.E. of the S.E. of Section 6; and Lot "A" in the
S.W. of the S.W. of Section 5, Township 47 North,
Range 1 East, Michigan Meridian, Michigan.

A. H. J. Parks

Commissioner, and Ex-Officio Surveyor General of Michigan.