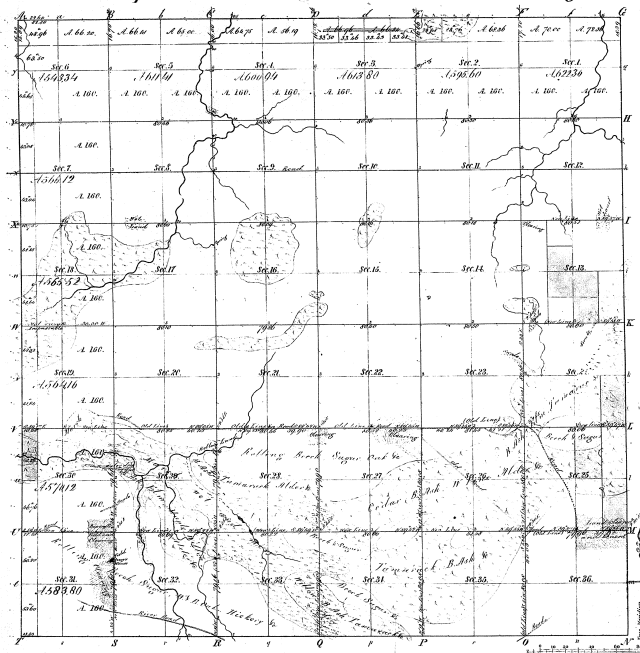


Correction & Return of a part of
Township 1° 8 North Range 1° 2 West Mer. Michigan



Minutes of
 Prob. Course 1851 Prob. Course 1852 Prob. Course 1853

511

21
 5-11

Note: The lots shaded brown in this portion of this township which have been corrected have not been corrected. The records for all lots not within this portion of this township north of the line from E. B. Street to Section 18 & 20, is copied from the old Plat, no corrections or corrections having been made thereon.

Survey designated	By Whom Surveyed	Date of Conduct	Total number of Acres 22487.11	
Township lines	Roll Charles	Nov 17 1850	16 92 46	1851
Subdivisions	John W. Carothers	Aug 26 1850	16 92 46	1851
Survey of Sections	Arthur Dack	April 18 1852	24 68 57	1852

The above copy of Township 1° 8 North of Range 1° 2 West of the Principal Meridian Michigan is as nearly conformable to the field notes of the survey thereon as file in this office, and has been examined and approved.
 Surveyor General's Office
 Detroit, October 19 1852
 Charles A. Holt
 Surveyor