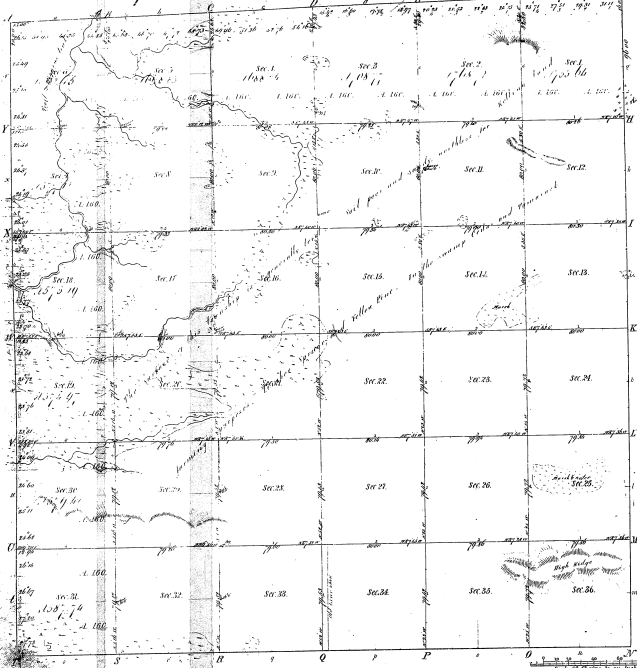


Re Survey
 Township 12 N. Range 17 W. Mer. 11th



14-21

11 21

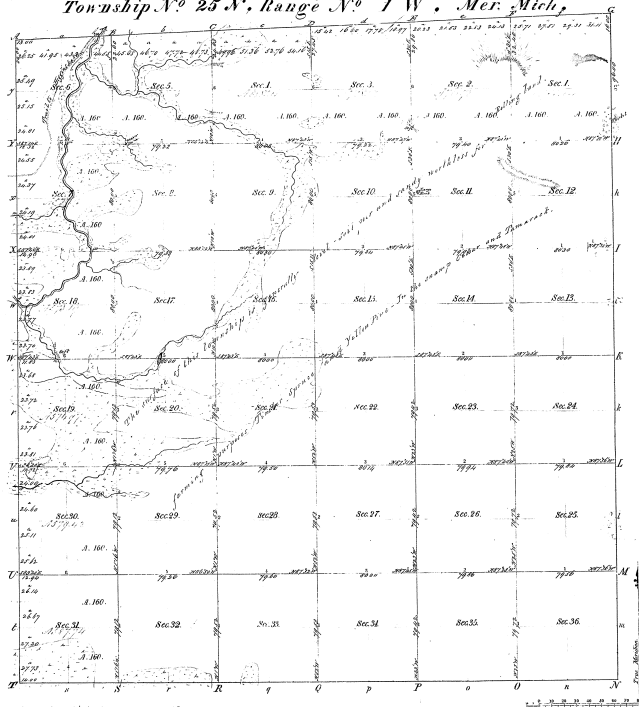
Meander's of
 Public Courses (HMA) Private Courses (PMA) Public Courses (PMA) Private Courses (PMA)

Total number of Acres 230,379

Survey Designated	By Whom Surveyed	Date of Commencement	Amount of Survey	When Surveyed	Being so and when the Survey was made
Township Area	John R. Ward	May 10, 1855	230,379	1855	
Subdivisions	D. D. Phillips	April 20, 1858	59,625.75	1858	

The above Map of Township 12 N. Range 17 W. Meridian of the Principal Meridian, as designed and shown on the field notes of the survey thereof, for the sections, which have been examined and approved by the Survey General's Office.
 Charles J. Little, Survey Genl.
 Philip S. G. [Signature]

Re. Survey.
Township N^o 25 N., Range N^o 1 W. Mer. Mich.



Surveyed in 1852 by *D. P. Collins*, Deputy Surveyor.

*I certify that the above is a true copy of the original
 original plat on file in this Office.
 Surveyor General's Office
 Collins*

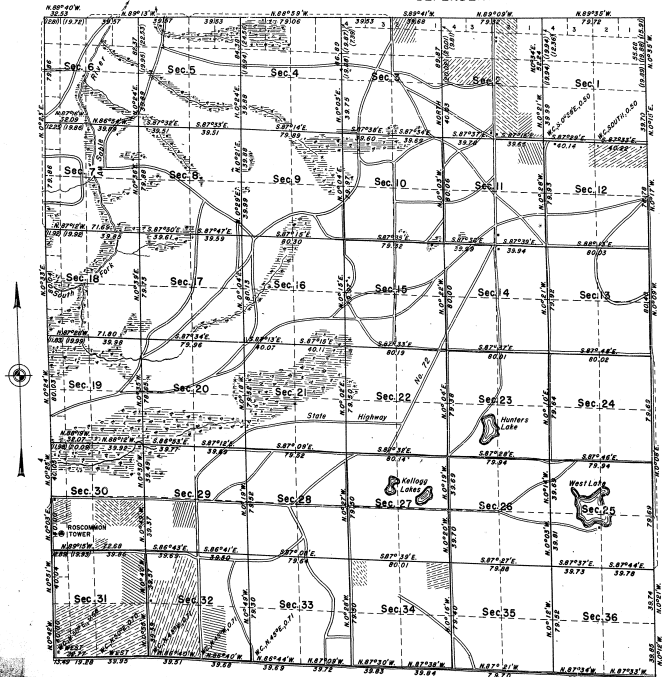
14-21

14-21

Sur. Genl.

TOWNSHIP No. 25 NORTH, RANGE No. 1 WEST, MICHIGAN MERIDIAN, MICHIGAN.

DEPENDENT RESURVEY



MEMORANDUM.

THIS PLAT OF THE RESURVEY OF T. 25 N., R. 1 W., DELINEATES A RETRACEMENT AND REESTABLISHMENT OF THE LINES OF THE ORIGINAL SURVEY AS SHOWN UPON THE PLAT APPROVED FEBRUARY 9, 1893, IN THEIR TRUE ORIGINAL POSITIONS ACCORDING TO THE BEST AVAILABLE EVIDENCE OF THE POSITION OF THE ORIGINAL CORNERS. ALL DIFFERENCES BETWEEN THE MEASUREMENTS SHOWN ON THE ORIGINAL PLAT AND THOSE OBTAINED IN THE RETRACEMENT HAVE BEEN DISTRIBUTED PROPORTIONALLY BETWEEN ACCEPTED CORNERS IN ACCORDANCE WITH SURVEYING RULES. REFERENCE WILL BE MADE TO THE ORIGINAL PLAT FOR THE SHOWING OF AREAS AND MORE DETAILED DESCRIPTIONS OF THE VARIOUS SMALLER SUBDIVISIONS.

THE RESURVEY WAS EXECUTED PURSUANT TO AUTHORITY CONTAINED IN GENERAL LAND OFFICE LETTERS 1570445 "C", DATED MARCH 23, 1937, AND MAY 16, 1937 WHICH BEARS DEPARTMENTAL APPROVAL ON THE SAME DATE.

NOTE.

THE SURFACE OF THE TOWNSHIP IS GENERALLY GENTLY ROLLING. THE GREATER PART OF THE TOWNSHIP HAS A SCATTERING TO FAIR GROWTH OF OAK, JACK PINE, AND PUGLAR TIMBER ON THE UPLAND, WITH SPRUCE, CEDAR, AND TAMPARACK IN THE SWAMP. THE TIMBER IS OF LITTLE COMMERCIAL VALUE.

OFFICE OF SUPERVISOR OF SURVEYS
DENVER, COLORADO, AUGUST 26, 1940

THE ABOVE PLAT OF TOWNSHIP NO. 25 NORTH, RANGE NO. 1 WEST, OF THE MICHIGAN MERIDIAN, MICHIGAN, IS STRICTLY CONFORMABLE TO THE FIELD NOTES OF THE RESURVEY THEREOF, WHICH HAVE BEEN EXAMINED AND APPROVED.

James P. Duncan

SUPERVISOR OF SURVEYS.

UNITED STATES
DEPARTMENT OF THE INTERIOR
GENERAL LAND OFFICE
WASHINGTON, D.C., APRIL 7, 1941.

THE RESURVEY REPRESENTED BY THIS PLAT, HAVING BEEN CORRECTLY EXECUTED IN ACCORDANCE WITH THE REQUIREMENTS OF LAW AND THE REGULATIONS OF THIS OFFICE, IS HEREBY APPROVED.

William W. Lusk
ASSISTANT COMMISSIONER.

Scale: 40 Chains to an inch.

Area Resurveyed 23,073.79 Acres.

LINES DESIGNATED BY WHOM SURVEYED	GROUP	DATE	MILEAGE WHEN SURVEYED			WHEN COMPLETED
			MLG.	CHS.	SEGN.	
Exterior	Gay R. West	40 April 12, 1937	17	5850	June 1, 1937	August 6, 1937
Subdivisional	T. Nolan Coombs James T. Boyd	59	6044			

47-21