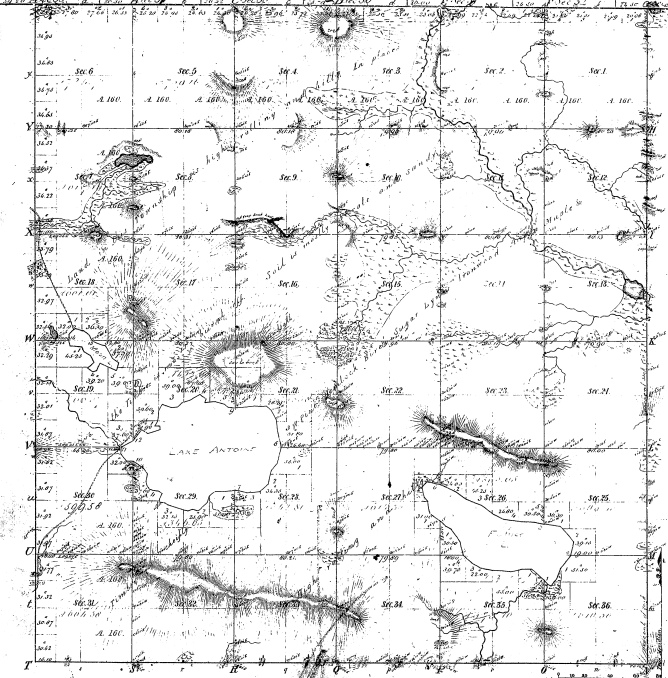


Township 34 N. Range 30 W. Range 29 W. Mer. Mich.



Boundaries of
 Public Courses (R.M.) Private Courses (R.M.) Private Courses (D.C.M.)

116

46-2

Total number of Acres 27,253.17

Survey Disposition of the tract	By Whom Surveyed	Date of Contract	Amount of Acres	When Surveyed	Where Surveyed
Subdivisions	James H. Hilditch	June 27, 1869	65.74	62	62

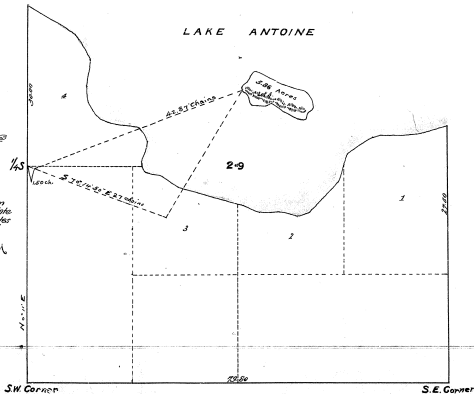
This plan map of Township 34 North of Range 29 West of the Principal Meridian Michigan is strictly conformable to the field notes of the survey thereon on file in this office, which have been examined and approved.

George Smith, Officer
 District April 14, 1880

46-2
46-2

MAP OF ISLAND
SECTION 29, T. 40 N., R. 30 W.
of Meridian of Michigan.
MICHIGAN.

George F. Cummings
U.S. Deputy Surveyor
SCALE - 1 inch = 10 chains.
August 22, 1922.



Department of the Interior,
General Land Office,
Washington, D.C., Jan 15, 1923.
The above plat of an Island in Lake Antoine, as Sec. 29,
T. 40 N., R. 30 W., Michigan, U.S. Michigan, is a correct
copy of a survey conducted by George F. Cummings, U.S.
Deputy Surveyor, in pursuance of special instructions from
the Commissioner of the General Land Office, bearing date
March 28th 1922, and is strictly conformable to the field notes
thereof, on file in this office, which have been examined
and approved.
George F. Cummings
Commissioner and ex-officio
Surveyor General for Michigan.