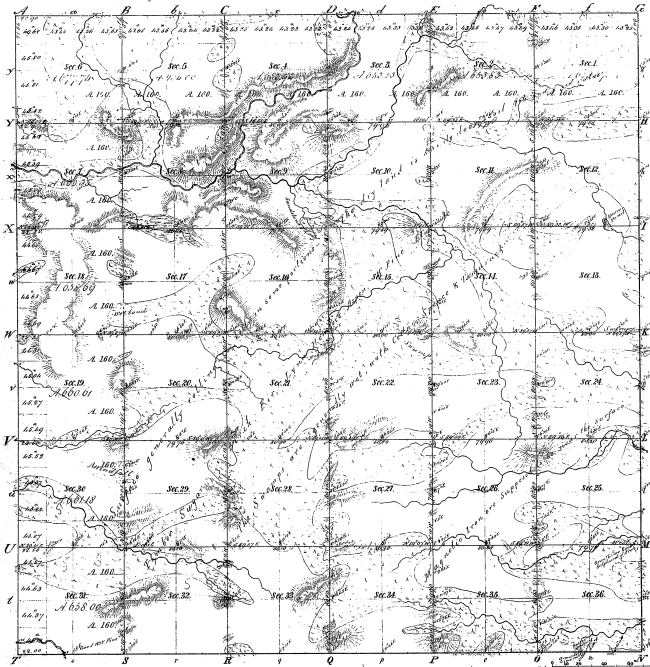


Township N^o 41 N. Range N^o 27 W. Mec. Mich.



Boundaries of
 Prec. courses 1848
 Prec. courses 1826
 Prec. courses 1826

37 110

38-40

Total number of Acres 23,245 5/8

Surveys Designated	By Whom Surveyed	Date of Commencement	Extent or Average	When Surveyed	When Examined and Approved
Township lines	Wells, Nichols, East	Sept. 7. 1857	23,245 5/8	1857	1858
Subdivisions	Leahy, Board	April 26. 1858	667.25 5/8	1858	1860

The above copy of Township N 41 N. of Range N 27 West of the Principal Meridian is a study conformable to the full notes of the survey thereof on file in the Office, which have been examined and approved.

Surveyor General's Office
 Detroit, June 11. 1857

Wm. A. M.
 Surveyor