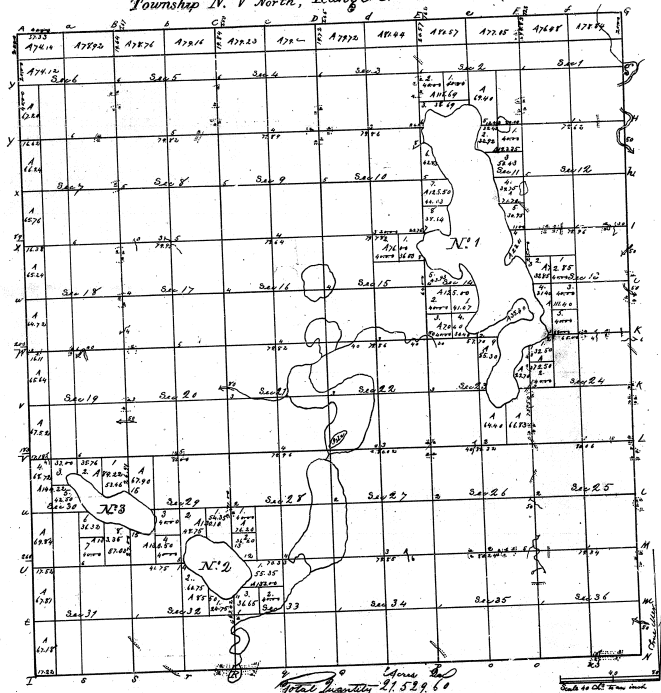


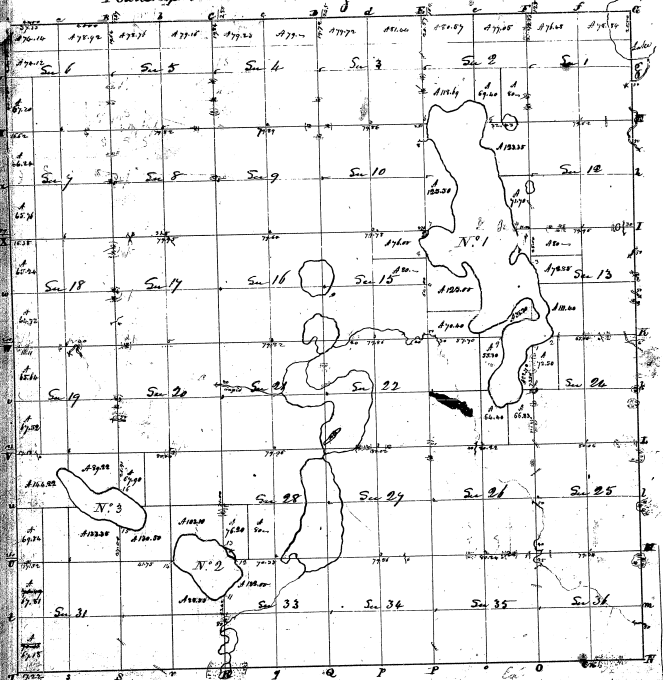
Township N.° V North, Range N.° VI East Mer. (M. Tor)

28-23 (4)
28-23



of the
Total Quantity 21,529.60
I do certify that the above is a true and correct copy of the original as filed in this office
Surveyor General's Office, Ottawa, Ontario
James J. G. G. G.

Township N. VI north, Range N. VI east Mer. (H. Ter.)



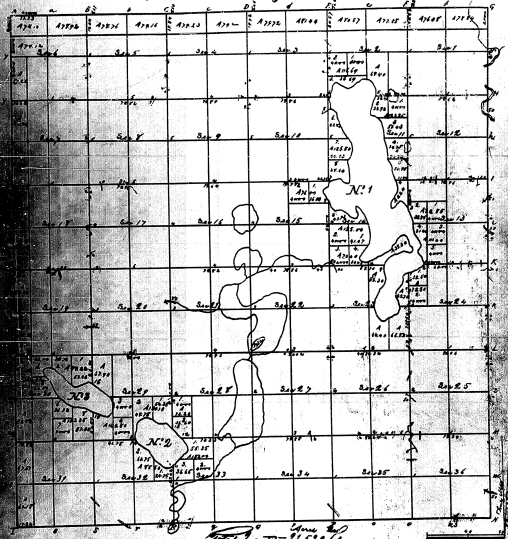
Scale in 1/4 6.30.31

Pursuant to a contract with and from Edward Jeffrey surveyor general of the United States bearing date the 1st day of
 I have returned and laid out and surveyed the above Township, and do hereby certify that the said Sub. Roads
 and bounds both Natural and Artificial are as represented on said plat and elsewhere in this map being
 correct and conformable with the plat and returns of said surveyor general—Edward Jeffrey
 Surveyor General
 Certified this 1st day of May 1833

28-23

28-23

Township N° 7 North, Range N° 11 East Mer (M.T.)



Given at
 Ottawa January 21 1873 A.D.
 I do hereby certify that the above map was prepared by Henry Peck
 in the 2^d part of the year 1863 and that it is a true copy
 from the original on file in this Office
 Henry James Clerk of the Peace
 Deputy Sheriff of the County

PLAT of an ISLAND

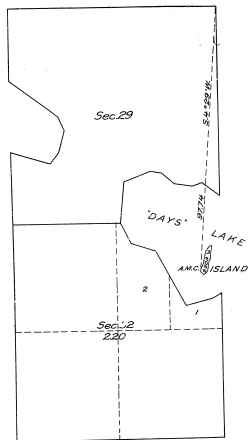
in
DAYS LAKE.

in
Section 32, T. 5 N., R. 6 E., Mich., Mer.,
MICHIGAN.

Accepted July 25, 1917
GLC

-28-23

28-23




LEGEN

Scale: 20 chains to an inch.
Surveyed by Francis W. Du Bois, U.S. Surveyor
from December 22 to 24, 1915, under special
instructions dated October 9, 1915, issued by Arthur
D. Hilder, Supervisor of Surveys, which were
approved by the Commissioner of the General
Land Office on October 12, 1915.
Area of lands surveyed: 220 acres, not shown
upon the plat approved October 15, 1883.
Area of previously surveyed lands not shown.

Department of the Interior,
General Land Office,

Washington, D.C., July 25, 1917

The above plat of an island in Days Lake, in Sec.
32, T. 5 N., R. 6 E., Michigan Meridian, Michigan, strictly
conforms to the field notes of the survey thereof,
on file in this office, which have been examined and ap-
proved.


Commissioner and ex officio
U.S. Surveyor General for Michigan.

140
DEPARTMENT OF THE INTERIOR
GENERAL LAND OFFICE

WASHINGTON June 6, 1933.

I hereby certify that the paper hereto at-
tached is a photolithographic
copy of the plat of ~~lands~~ of the lands to which it
relates, on file in this office, namely:

T. 5 N., R. 6 E., Mich. M., Michigan, 1823.

IN TESTIMONY WHEREOF I have hereunto
subscribed my name and caused the
seal of this office to be affixed,
at the city of Washington, on the
day and year above written.



J. H. David

Acting Assistant Commissioner of the General Land Office.